



*Adrian Saxe*

# *Adrian Saxe*

Front Cover:

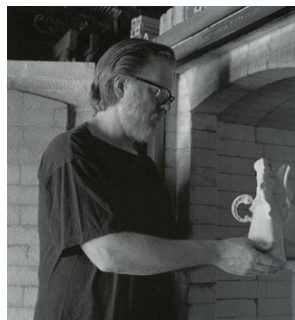
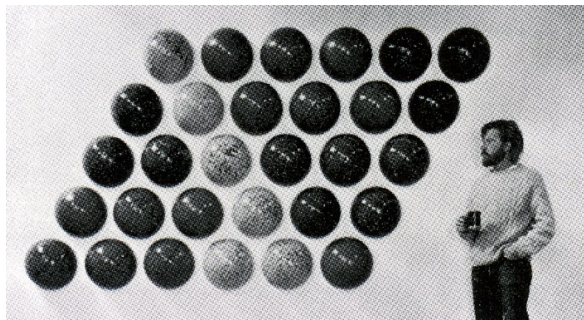
Adrian Saxe in his studio, 1987

Photo by Anthony Cuñha



Frank Lloyd Gallery, Inc.  
2525 Michigan Avenue, B5b  
Santa Monica, CA 90404  
PH: 310 264-3866  
FX: 310 264-3868  
[www.franklloyd.com](http://www.franklloyd.com)

# Adrian Saxe



The extraordinary experimentation in ceramic art of Los Angeles since World War II is international in scope. Among the most inventive and significant artists since 1970 is Adrian Saxe. Saxe's early work was site-specific sculpture that employed arrays of modular ceramic elements. Some of these pieces were exhibited in the late 1960s at the Pasadena Art Museum.

Saxe has worked with the ceramic vessel because he saw the opportunity to address complex social and cultural issues in a format accessible to a broad audience. Since the early 1980s, Saxe has sought to reinvent a role for ceramic art that employs decorative art conventions to comment on social and cultural expectations surrounding a number of topical themes. Some of these themes are explored in his new exhibition, *GRIN—Genetic Robotic Information Nano (Technologies)*.

Christopher Knight of the Los Angeles Times has written, "With outrageous humor and unspeakable beauty, [Saxe] makes intensely seductive objects that exploit traditional anthropomorphic qualities associated with ceramics. Having pressed the question of the utility of his own art in a post-industrial world, his work engages us in a dialogue about our own place in a radically shifting cultural universe."



*Lollycock (Bronze Dento)*, 1968  
porcelain, lusters and Plexiglas cover and base  
14 ½ x 9 x 9 inches



*Lollycock (Dento)*, 1968  
porcelain, lusters and Plexiglas cover and base  
14 ½ x 9 x 9 inches



*Untitled Crystalline Dome Set*, 1968  
porcelain and Plexiglas base  
6 ¼ x 21 x 7 ½ inches



*4 squared - Chrome Crystalline Array*, 1968  
earthware  
50 ¾ x 82 inches



*Untitled Ewer (Aubergine)*, 1982  
porcelain  
9 inches high





*Untitled Ewer (Bittermelon)*, 1982  
porcelain and lusters  
10 ¼ x 5 ½ x 3 inches



*Untitled Covered Jar on Stand with Antelope Finial, 1980-1981*  
porcelain  
22 5/8 inches high



*Untitled Covered Jar on Stand with Antelope Finial (Garth Vader), 1986*  
porcelain, raku, stoneware, and lusters  
20 3/4 x 12 x 11 inches



*Untitled Mortar Bowl with Stand, 1987*  
porcelain, raku, and lusters  
15 ¼ x 8 x 8 inches



*Untitled Mortar Bowl with Stand, 1987*  
porcelain, raku, and lusters  
9 5/8 x 8 x 7 inches



*Untitled Covered Jar on Stand with Antelope Finial (Prosperity), 1987*  
porcelain, raku, and lusters  
31 ½ x 11 x 6 inches



*Untitled Covered Jar on Stand with Antelope Finial (Critical Mass), 1987*  
porcelain and stoneware  
32 ½ x 11 x 6 inches



*Untitled Ewer (French Curve)*, 1987  
porcelain and stoneware  
11 ½ x 7 inches





*Untitled Ewer (Franklin Gothic Italic Ampersand)*, 1989  
porcelain  
10 ¼ x 9 inches



*Untitled Covered Jar on Stand, 1987*  
porcelain, raku, and lusters  
15 ½ x 16 x 9 inches



*Untitled Covered Jar on Stand, 1987*  
porcelain, raku, and lusters  
15 ½ x 16 x 9 inches



*a & b*, 1987  
porcelain and lusters  
dimensions variable



*Amy-Yma (Camus-Sumac)*, 1989  
garniture of five porcelain gourds  
15 x 30 x 4 ½ inches



*Shirley's Friend*, 1989  
porcelain, lusters, faceted cubic zirconia, and Brazilian phantom quartz crystal  
21 x 13 x 9 ¾ inches



*Untitled Covered Jar*, 1989  
porcelain, lusters, rubies, and gold  
11  $\frac{7}{8}$  x 4  $\frac{1}{2}$  x 4  $\frac{1}{2}$  inches



*Acorn Squash Teapot with Gold Veining*, 1990  
porcelain  
7 ½ x 9 ½ inches





*Gold Cabbage Teapot*, 1990  
porcelain  
9 ¼ x 9 inches



*Sur le bout de la langue*, 1991  
porcelain, raku, lusters, blue sapphire rhinestones, and found objects  
13 ½ x 15 x 11 inches



*Caprideux Carquois*, 1991  
porcelain, lusters, and mixed media  
16  $\frac{3}{4}$  x 6  $\frac{1}{2}$  x 8 inches



*Untitled Mystery Ewer*, 1992  
porcelain, lusters, and mixed media  
11 1/8 x 8 1/2 x 4 1/2 inches



*Untitled Mystery Ewer*, 1992  
porcelain, lusters, and mixed media  
11 1/8 x 8 1/2 x 4 1/2 inches



*Clue: Book - Cheese - Ribbon*, 1993  
porcelain and mixed media  
23  $\frac{3}{4}$  x 9  $\frac{1}{4}$  x 8 inches



*Untitled Jar (D.A. Moraine), 1994*  
porcelain and mixed media  
26 x 14 ½ x 9 inches



*Come on Baby! Light My Fire Hydrant*, 1993  
porcelain, stoneware, mixed media  
30 x 12 inches





*Bungee de Campostella*, 1995  
porcelain, stoneware, and mixed media  
36 x 8 ½ x 12 ½ inches



*Untitled Ewer (St. Beverly Hills)*, 1995  
porcelain, stoneware, and mixed media  
18  $\frac{3}{4}$  x 10  $\frac{7}{8}$  x 5  $\frac{5}{8}$  inches



*Untitled Ewer (San Gennaro)*, 1994  
porcelain, stoneware, and mixed media  
14 ¼ x 9 ¼ inches



*Hi-Fibre Double-Happiness Magic Lamp, 1997*  
earthenware, stoneware, and mixed media  
26 ¼ x 15 x 5 ½ inches



*Hi-Fibre Crucible of Courage Magic Lamp*, 1997  
earthenware, stoneware, and mixed media  
21 x 12 ½ x 4 inches



*1-900-Zeitgeist*, 2000

porcelain, stoneware, and mixed media

Installation view at the J. Paul Getty Museum, *Departures: 11 Artists at the Getty*, 2000



*Nirvanarhea*, 2002  
ceramic and stoneware  
63 x 32 inches



*Irrational Exuberance*, 2001  
porcelain, noble metal lustres, and rhinestones  
8 x 9 x 5 ¼ inches





*Shiitake Jamboree*, 2001-2004  
porcelain, stoneware, lusters, overglaze enamels, and mixed media  
27 ¼ x 10 ¾ x 10 ½ inches



*Le Rois du Monde Futur*, 2004  
porcelain, stoneware, overglaze enamel, lusters, and mixed media  
26 ¼ x 13 ¼ x 10 inches



*Sweet Dreams, 2004*  
porcelain, stoneware, overglaze enamel, lusters, and mixed media  
31 ¼ x 14 x 8 ¼ inches



*Untitled Ewer (Twanger), 2004*  
porcelain, stoneware, lusters, mixed media  
14 1/8 x 8 3/8 x 6 3/4 inches



*Untitled Ewer (BSD), 2004*  
porcelain, stoneware, mixed media  
13 x 8 ¼ x 5 ½ inches



*Bell of Tacos, King of Burgers, 2004*  
porcelain, stoneware, lusters, and mixed media  
29 x 12 3/4 x 7 1/4 inches



*D'Nile*, 2004  
porcelain, stoneware, overglaze lusters, and mixed media  
31 x 17 ½ x 7 ¼ inches



*Untitled Ewer (Fungo-Bungo)*, 2004  
porcelain, stoneware, and mixed media  
14  $\frac{1}{8}$  x 8  $\frac{5}{8}$  x 6  $\frac{3}{4}$  inches





*Untitled Ewer (Twister with Apatite II)*, 2004  
porcelain, stoneware, and mixed media  
16 1/8 x 9 x 5 inches



*Golden Extremophile*, 2004  
earthenware and stoneware  
33 ½ x 8 x 7 ¼ inches



*Green Extremophile*, 2004  
earthenware and stoneware  
32 ¼ x 8 ½ x 9 inches



*Welcome Stranger*, 2011  
porcelain, lusters and mixed media on Antique wood base  
14  $\frac{3}{4}$  x 8  $\frac{1}{4}$  x 5  $\frac{1}{4}$  inches



*Outback Cathedral*, 2011  
porcelain, lusters and mixed media on Antique wood base  
15 <sup>3</sup>/<sub>4</sub> x 7 <sup>3</sup>/<sub>4</sub> x 7 inches



*Holy Trinity- Fat, Salt, Sugar*, 2011 (view 1)  
porcelain, lusters and mixed media on Antique wood base  
16 ½ x 8 x 5 ¾ inches



*Holy Trinity- Fat, Salt, Sugar*, 2011 (view 2)  
porcelain, lusters and mixed media on Antique wood base  
16 ½ x 8 x 5 ¾ inches



*Dynamite-maki California Spider Roll, 2011*  
porcelain, lusters and mixed media on Antique wood base  
22  $\frac{3}{4}$  x 11 x 7  $\frac{1}{2}$  inches





*Juvenile Gavage à trois*, 2011  
earthenware and lusters  
22 ½ x 10 ⅜ x 7 ½ inches



*Springtime for Laphroaig*, 2011  
earthenware on wood base  
29 x 18 ¾ x 15 ¾ inches



*Bunnahbain Forever*, 2011  
stoneware on wood base  
22  $\frac{3}{4}$  x 19  $\frac{1}{4}$  x 17  $\frac{1}{4}$  inches



# Adrian Saxe

1943 Born in Glendale, California  
Lives and works in Los Angeles, California

## Education

1974 B.F.A., California Institute of the Arts, Valencia, California  
1965- Chouinard Art Institute, Los Angeles  
1969

## One Person Exhibitions

2011 *GRIN - Genetic, Robotic, Information, Nano (Technologies)*, Frank Lloyd Gallery, Santa Monica, California  
2004 *New Work*, Frank Lloyd Gallery, Santa Monica, California  
2000 Garth Clark Gallery, New York  
1998 *The American Hand*, Washington, D.C.  
1997 *Wish I May, Wish I Might*, Frank Lloyd Gallery, Santa Monica, California  
Garth Clark Gallery, New York  
1996 Garth Clark Gallery, New York  
1995 Garth Clark Gallery, Los Angeles, California  
1994 Garth Clark Gallery, New York  
1993 *The Clay Art of Adrian Saxe*, Los Angeles County Museum of Art, traveled to the Museum of Contemporary Ceramic Art, Shigaraki, Japan and Newark Museum, New Jersey (thru 1995)  
1992 Garth Clark Gallery, New York  
1991 Garth Clark Gallery, Los Angeles, California  
Garth Clark Gallery, Kansas City, Missouri  
1990 Garth Clark Gallery, New York  
1989 *Ceramic Sculpture*, Garth Clark Gallery, Los Angeles, California  
1988 Garth Clark Gallery, New York  
1987 Art Gallery, University of Missouri, Kansas City, Missouri  
Garth Clark Gallery, New York  
1985 *New Work*, Garth Clark Gallery, Los Angeles, California  
*Porcelain from Sèvres, with Light*, American Hand, Washington, D.C.  
*Since Sèvres—New Works*, Garth Clark Gallery, New York  
1983 *New Raku and Porcelain Works*, Garth Clark Gallery, New York  
The American Hand, Washington, D.C.,  
Thomas Segal Gallery, Boston, Massachusetts

- 1982 *Between Sèvres and Momoyama*, Garth Clark Gallery, Los Angeles,  
California  
The American Hand, Washington, D.C.
- 1980 The American Hand, Washington, D.C.
- 1979 The American Hand, Washington, D.C.
- 1973 The American Hand, Washington, D.C.
- 1970 Canyon Gallery II, Los Angeles, California
- 1963 Orange Coast College, Costa Mesa, California

**Museum  
Collections**

Arizona State University Art Museum, Ceramics Research Center, Tempe, Arizona

Brooklyn Museum of Art, Brooklyn, New York

Canton Museum of Art, Canton, Ohio

Carnegie Museum of Art, Institute and Carnegie Museum of Natural History,  
Pittsburgh, Pennsylvania

Cooper-Hewitt Museum Smithsonian Institution, National Museum of Design, New York

Cultural Affairs Commission, County of Los Angeles, California

Currier Museum of Art, Manchester, New Hampshire

de Young Museum, San Francisco, California

Everson Museum of Art, Syracuse, New York

First Bank, Minneapolis, Minnesota

Gardiner Museum, Ontario, Canada

Hallmark Fine Art Collection, Hallmark Cards, Inc., Kansas City, Missouri

Kruithuis Museum, 's-Hertogenbosch, Netherlands

Long Beach Museum of Art, Long Beach, California

Los Angeles County Museum of Art, Los Angeles, California

The Metropolitan Museum of Art, New York

Mint Museum of Craft and Design, Charlotte, North Carolina

Musée des Arts Décoratifs, Pavillion de Marsan, Palais de Louvre, Paris

Musée National de Céramique de Sevres, Sevres, France

Museum of Arts and Design, New York

Museum of Fine Arts, Houston, Texas

National Gallery of Australia, Canberra

Nelson-Atkins Museum of Art, Kansas City, Missouri

Nerman Museum of Contemporary Art, Overland Park, Kansas

Newark Art Museum, Newark, New Jersey

Nora Eccles Harrison Museum, Logan, Utah

Oakland Museum of Art, Oakland, California

Prudential Life Insurance, Newark, New Jersey

Racine Art Museum, Racine, Wisconsin

Renwick Gallery, National Collection of American Art, Smithsonian Institution,  
Washington, D.C.

Rhode Island School of Design Museum of Art, Providence, Rhode Island

Shigaraki Ceramic Cultural Park, Shigaraki, Japan

Taipei Museum of Fine Art, Taipei, Taiwan, R.O.C.

Times-Mirror Corporation, Los Angeles, California

Toledo Museum of Art, Toledo, Ohio

U.S. News and World Report, Washington, D.C.

Victoria and Albert Museum, London, England

The White House, Washington, D.C.

© 2011 by Frank Lloyd Gallery