



THINA DUBE

Grand Awakening

2018

Monotype, blind embossing and acrylic on Fabriano paper

49 x 65 cm (19.3 x 25.6 inches)

R6,000.00

Thina Dube's work has long explored identity politics in South Africa: he frequently references identity's many layers, both visible and hidden, and its fluid qualities, constantly changing and responding to social environments.

Borrowing his title from the sweet-smelling yet toxic plant nicknamed "yesterday-today-and-tomorrow", Dube's newest body of work reflects on how history is injected into contemporary identity politics to create a particular sense of unbroken temporality. He highlights the sense of societal post-traumatic stress disorder in post-apartheid South Africa, especially in relation to education, corruption and land distribution. Dube's imagery and mark-making references certain PTSD symptoms, both behavioural and psychological, ranging from agitation and hypervigilance to anxiety and mistrust. In addition to monotypes in the monochromatic 'signature style' he is known for, the exhibition also includes new painting works which emerged during his recent residency in Zimbabwe.

Born in 1993, Thina is a graduate of the University of Johannesburg, holds a postgraduate diploma in Education, and has taught at the National School of the Arts. Thina is also an art therapist who works with children with special needs at Casa do Sol. He has exhibited in group shows at Turbine Art Fair, Constitution Hill, Sguzu Press Soweto, and AVA amongst others. In 2018, he has exhibited at the Stellenbosch Museum, ABSA, Eclectica and InToto, and also completed a residency with First Floor Gallery Harare. His work will be presented by Guns & Rain at AKA Paris in November 2018. Thina has worked with Guns & Rain since 2015.



THINA DUBE

A Pocket of Dreams

2018

Monotype and blind embossing on Fabriano paper

65 x 48 cm (25.6 x 18.9 inches)

R6,000.00



THINA DUBE

Misunderstood

Monotype on paper

80 x 70 cm (31.5 x 27.6 inches)

R6,500.00



THINA DUBE

Big Brother Is Watching You

2018

Acrylic, soft pastel, masking tape and drawing ink on Fabriano paper

100 x 70 cm (39.4 x 27.6 inches)

R9,000.00



THINA DUBE

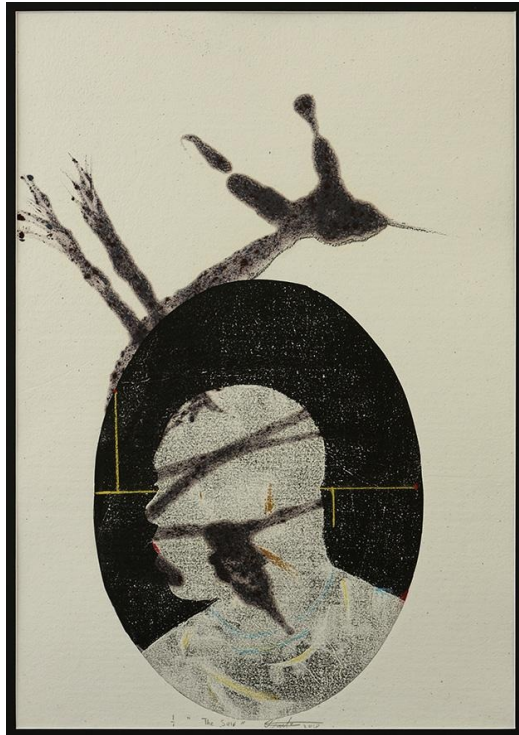
The Questions

2018

Monotype and embossing on Fabriano paper

70 x 80 cm (27.6 x 31.5 inches)

R6,500.00



THINA DUBE

The Self

2018

Monotype, pulp painting and soft pastel on handmade paper

60 x 43 cm (23.6 x 16.9 inches)

R7,000.00



THINA DUBE

Catching Up with the Past

2018

Acrylic and soft pastel on Fabriano paper

100 x 70 cm (39.4 x 27.6 inches)

R9,000.00



THINA DUBE

Reflections

2018

Monotype and blind embossing on Fabriano paper

70 x 80 cm (27.6 x 31.5 inches)

R6,500.00



THINA DUBE

Imbuza

2018

Monotype, blind embossing, drawing ink and soft pastel on Fabriano paper
63 x 43 cm (24.8 x 16.9 inches)

R6,000.00



THINA DUBE

"Comrades!" He cried

2018

Acrylic on canvas

90 x 70 x 2 cm (35.4 x 27.6 x 0.8 inches)

R11,000.00



THINA DUBE

"Weak or strong, clever or simple, we are all brothers"

2018

Acrylic on canvas

70 x 90 x 2 cm (27.6 x 35.4 x 0.8 inches)

R11,000.00



THINA DUBE

The Talk We Never Had

2018

Monotype, blind embossing and acrylic on Fabriano paper

65 x 49 cm (25.6 x 19.3 inches)

R6,000.00



THINA DUBE

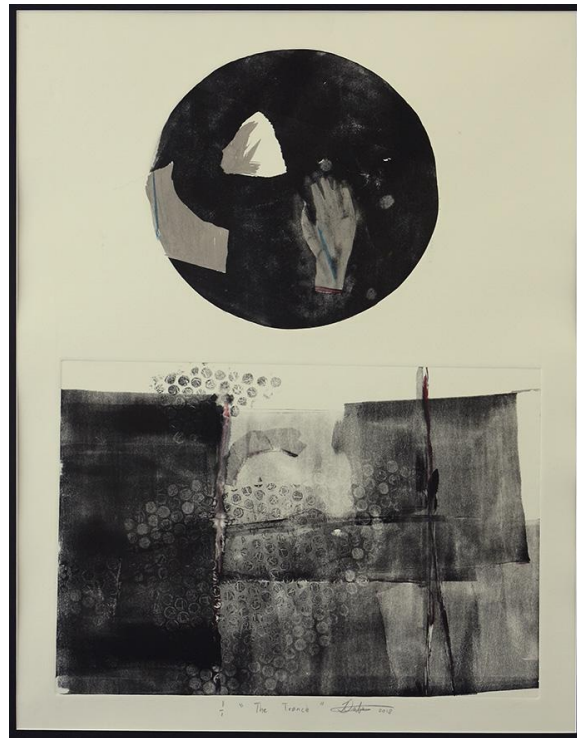
Before Time Stood Still

2018

Monotype, blind embossing and soft pastel on Fabriano paper

65 x 50 cm (25.6 x 19.7 inches)

R6,000.00



THINA DUBE

The Trance

2018

Monotype, soft pastel and drawing ink on Fabriano paper

64 x 50 cm (25.2 x 19.7 inches)

R6,000.00



THINA DUBE

Cynical

2018

Monotype on Fabriano paper

70 x 80 cm (27.6 x 31.5 inches)

R6,500.00

THINA DUBE

Thina Dube's work has long explored identity politics in South Africa: he frequently references identity's many layers, both visible and hidden, and its fluid qualities, constantly changing and responding to social environments.

Borrowing his exhibition title from the sweet-smelling yet toxic plant nicknamed "yesterday-today-and-tomorrow", Dube's newest body of work reflects on how history is injected into contemporary identity politics to create a particular sense of unbroken temporality. He highlights the sense of societal post-traumatic stress disorder in post-apartheid South Africa, especially in relation to education, corruption and land distribution. Dube's imagery and mark-making references certain PTSD symptoms, both behavioural and psychological, ranging from agitation and hypervigilance to anxiety and mistrust. In addition to monotypes in the monochromatic 'signature style' he is known for, the exhibition also includes new painting works which emerged during his recent residency in Zimbabwe.

Born in 1993, Thina is a graduate of the University of Johannesburg, holds a postgraduate diploma in Education, and has taught at the National School of the Arts. Thina is also an art therapist who works with children with special needs at Casa do Sol. He has exhibited in group shows at Turbine Art Fair, Constitution Hill, Sguzu Press Soweto, and AVA amongst others. In 2018, he has exhibited at the Stellenbosch Museum and Eclectica in Cape Town, ABSA and Eclectica in Johannesburg and also completed a residency with First Floor Gallery Harare. His work will be presented by Guns & Rain at AKAA Paris in November 2018. Thina has worked with Guns & Rain since 2015.

GUNS & RAIN

Tel +27762945332

Address: 55 12th Street, Parkhurst

Johannesburg 2193

www.gunsandrain.com

JULIE TAYLOR

Founder & Director

+27762945332

julie@gunsandrain.com

Trading hours

By appointment