



INVISIBLE CITY
LIEW MEI TOONG

G13 PROJECT ROOM
LIEW MEI TOONG

22 SEPTEMBER - 6 OCTOBER 2018

INVISIBLE CITIES BY LIEW MEI TOONG

G13 Project Room was established in 2016. G13 Project Room was initially created by G13 gallery as a platform that aims to promote new innovative direction of those who wishes to diversify their arts by venturing into new methods and materials. Project Room is in its eleventh installment and G13 gallery is proud to present Liew Mei Toong, a fine art graduate from Dasein Academy of Art. 'Invisible Cities' is an attempt by Liew Mei Toong to study and document the emotion and behavior of a few selected random strangers that she comes across in the city. The artist believes that the pressure of living in an urban setting is more devastating and challenging if compared to those who resides in the suburbs. Mei Toong aims to capture the emotion and translate it into her artwork.

Being an avid fan of psychology, there are a lot of traits that Liew Mei Toong as a visual researcher had looked into before preparing for her work. She would preferably record the body language and facial expressions through an unnoticed angle. For the most part, her visual research would suggest that these peoples who ended up as her subjects are portraying similar unhappiness and distress. The artist would also suggest that the stress causes imbalance in the each of the spiritual side of the individuals.

'Invisible Cities' by Liew Mei Toong is a series that was done a handful of mixed media such as charcoal, gloss gel, paper prints, oil pastel and acrylic. The end result would suggest how the artist narrates and harmonizes the narration and composition that suits each of the material used to visualize her idea.

Through Project Room program, the artist hopes to start of her exploration in discovering art techniques and style which suits her next idea as she moves onward. The showcase will display nine mix media artworks from the artist. 'Invisible Cities' is a showcase exhibition by Liew Mei Toong, a program by G13 Project Room.

ARTIST STATEMENT

My works explore the people in my lifeblood that I observed and encounter in different times and spaces. They record my inner emotions swing and sentiments towards outer experiences, everyday trivial and personal experiences when encountering people. Time refers to the past, now and moments of a day, whilst space refers to venues, locations and existences that consist of subjective materiality. And, people refer to the familiars and strangers.

The content of the works shuttles between togetherness, parting, sadness and anxiety about different conditions of life. I enjoy expressing my sensible side with broken images and textured surface. I attempted to present vicissitude, loneliness, depression and helplessness found within the cause and effect of life.

"To know myself is to know others." Our existence based on the existence of others and we are interconnected. Sometimes when I observed people on the street, it is difficult for me to understand their inner feelings through their faces but sometimes I can as if see through a little.

It was as if being shifted to a different space when I try to capture their images through the viewfinder of my camera. A spectrum of thoughts and sentiments would appear just like the images formed in a kaleidoscope. It reminds me a quote by Gucheng, "I was afar when you saw me but the cloud was nearer."

I adopt the techniques of building, destroying and repairing in my work. It suggests a sense of life mending within the process of arranging, taking away and rearranging. The works allow the viewers to engage in a narrative concerning the complication of life.

ARTWORKS





Cities & Desire

100 x 140 cm | Paper, charcoal, oil pastel, gloss gel & acrylic on canvas | 2018



The Lost of The City I

100 x 135 cm | Paper, charcoal, oil pastel, gloss gel & Acrylic on canvas | 2018



The Lost of The City II
98 x 135 cm | Paper, oil pastel, gloss gel & acrylic on canvas | 2018



The Lost of Us
90 x 135 cm | Paper, oil pastel, gloss gel & acrylic on canvas | 2018



Cities & Sign
56 x 168 cm | Paper, charcoal, oil pastel, gloss gel & acrylic on canvas | 2018



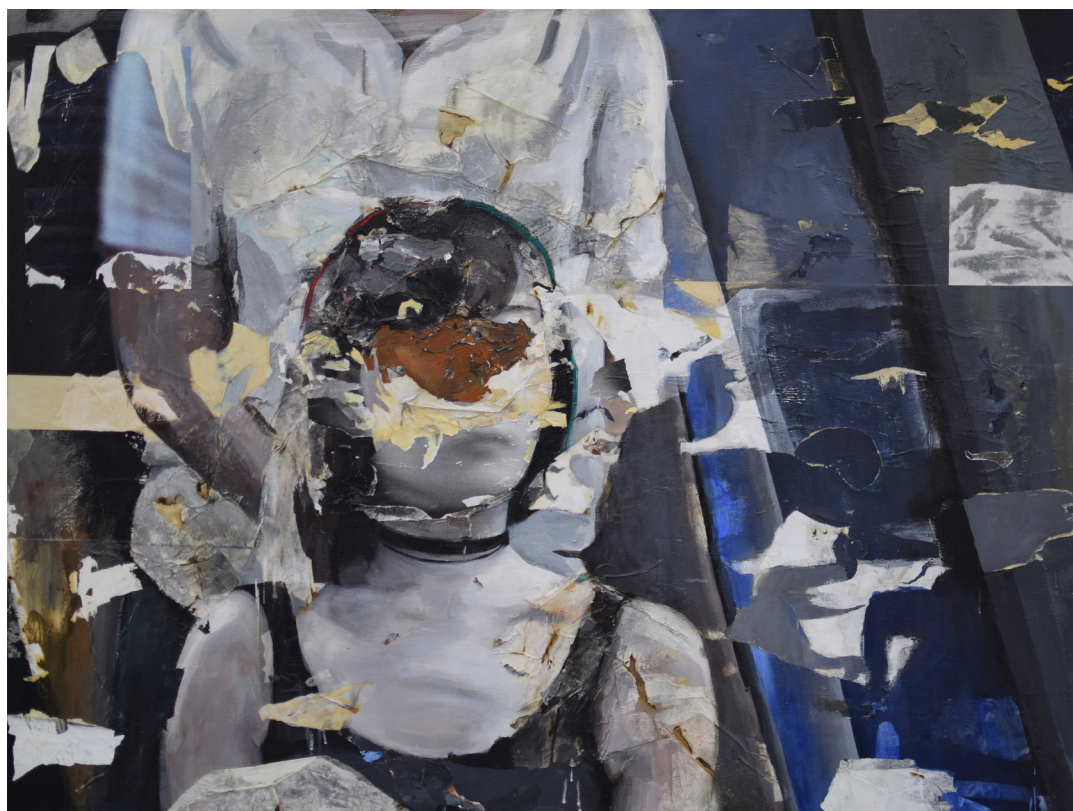
Cities & Memory (Full Series)
Variable Dimensions | Paper, charcoal, oil pastel, gloss gel & acrylic on paper | 2018



Tell Me About Your City
82 x 67 cm | Paper, oil pastel, gloss Gel & Acrylic on Canvas | 2018



Where Are You Heading
102 x 90 cm | Paper, print, gloss gel and acrylic on canvas | 2017



Wave of Sense
98 x 130 cm | Paper, print, gloss gel & acrylic on canvas | 2017



LIEW MEI TOONG

Born on 1996, Johor Bahru

Education

2017 Diploma in Fine art, Dasein Academy of Art

Solo Exhibition

2018 'Invisible Cities': G13 Project Room by Liew Mei Toong, G13 gallery, Malaysia

Group Exhibitions

2018 OUTSPOKEN, Titikmerah, Publika Mall, Malaysia
 RRRWARRR!!, Balai Seni, 1st Menara Maybank, Malaysia
 Locals Only 2018, Gallery Taksu, Kuala Lumpur, Malaysia
 2017 Visual Arts Pitch 2, Gallery Chandan, Publika Mall, Malaysia
 Monsoon, Gallery Titikmerah, Publika Mall, Malaysia
 Nando's Art Initiative, competition, Publika Boulevard, Malaysia
 Homework Display II, Cheras Leisure Mall, Malaysia
 2016 Homework Display, Cheras Leisure Mall, Malaysia
 FUTURAMA, Damansara Performing Arts Centre (DPAC), Petaling Jaya, Malaysia

Awards

2017 UOB Painting of The Year, competition shortlist, Malaysia
 Visual Arts Pitch competition finalist, Gallery Chandan, Malaysia
 Nando's Art Initiative competition finalist, Consolation prize, Publika Boulevard G2, Malaysia

Published in conjunction with the exhibition :

G13 PROJECT ROOM: INVISIBLE CITIES , A SHOWCASE EXHIBITION BY LIEW MEI TOONG
22 SEPTEMBER - 6 OCTOBER 2018

Publisher

Art Valley Sdn Bhd

G13 Gallery, GL - 13, Ground Floor, Block B, Jalan SS7/26, Kelana Square, 47301 Kelana Jaya, Selangor,
Malaysia.

T: 03-7880 0991 | F: 03-7886 5755 | E: info@g13gallery.com.my W: www.g13gallery.com.my | Design:
Khair Abd Muin

Copyright © 2018 Art Valley Sdn. Bhd. No part of this publication may be reproduced or transmitted or
published in any form or by any means, electronic or mechanical, including photocopy, recording or any
information storage and retrieval system, without permission in writing from the copyright owner(s). The views
expressed in this catalogue are not necessarily those of the publisher.



G13
gallery

G13
project room