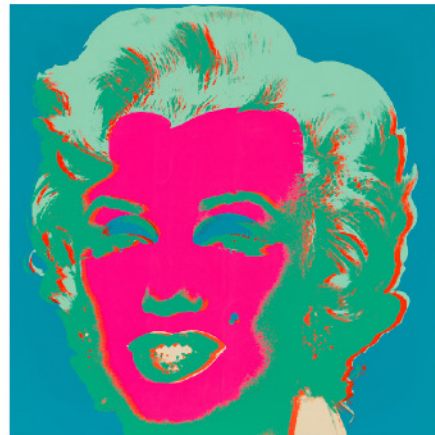
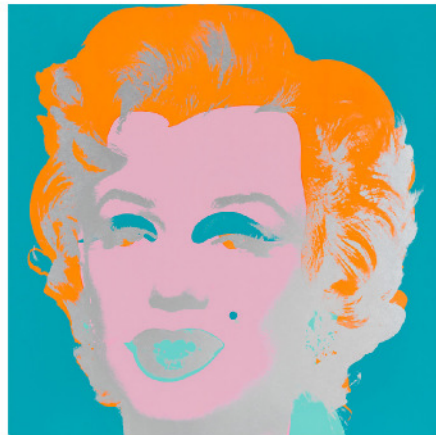


POST-WAR AND CONTEMPORARY ART
DAY SALE



CHRISTIE'S










As a leader in the art market,

Christie's is committed to **building a sustainable business model** that promotes and protects the environment. Our digital platform on christies.com offers a conscious approach, creating an immersive space where we bring art to life through high quality images, videos and in-depth essays by our specialists.

With this robust online support, Christie's will print fewer catalogues to ensure that we achieve our goal of **Net Zero by 2030**. However, when we do print, we will uphold the highest sustainable standards.

The catalogue you are reading is:

-  printed on fully recycled paper;
-  printed with vegetable-based ink and biodegradable laminates;
-  printed in close proximity to our markets in an effort to reduce distribution emissions.

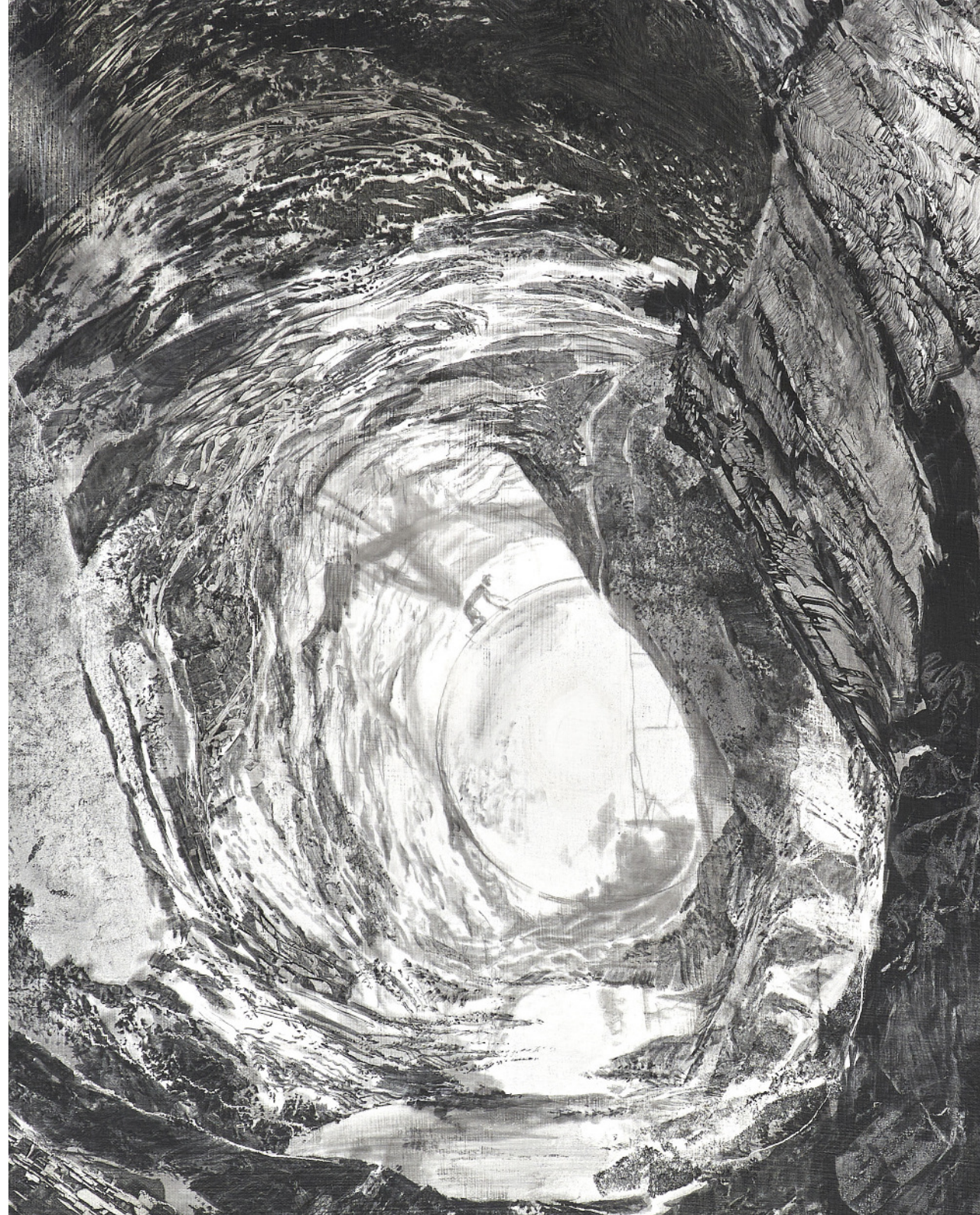
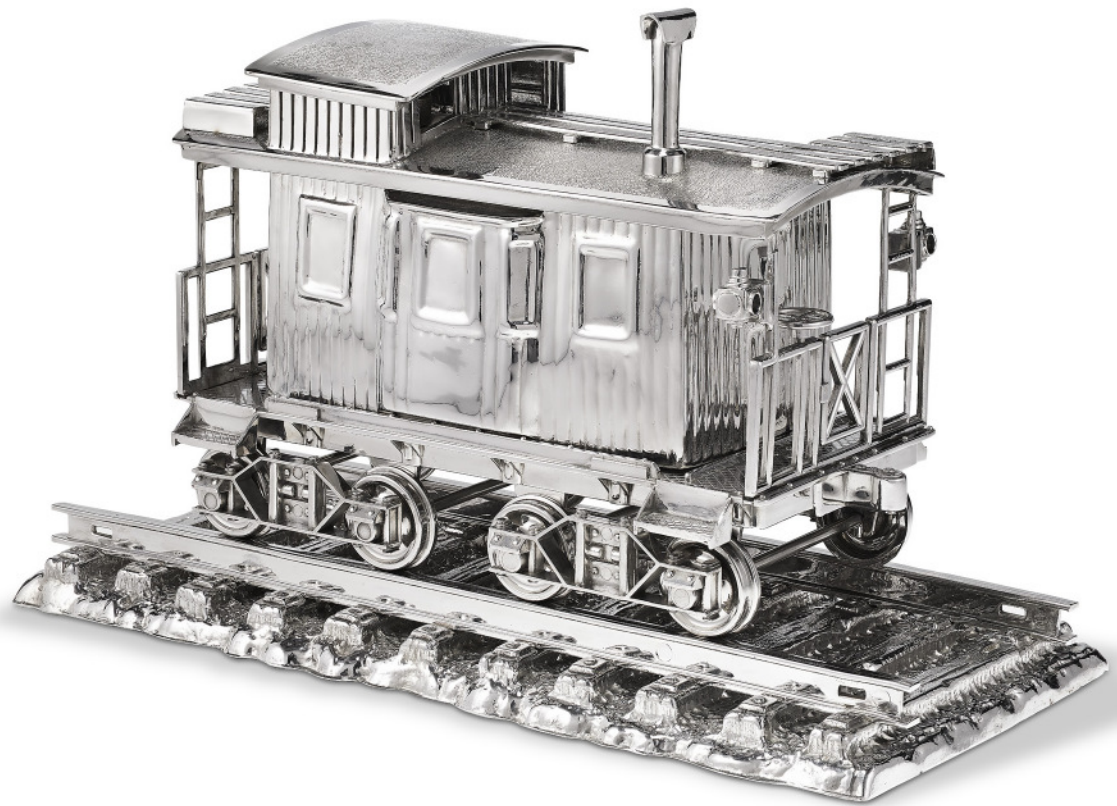


Please scan for more information about our sustainability goals and projects.

CHRISTIE'S

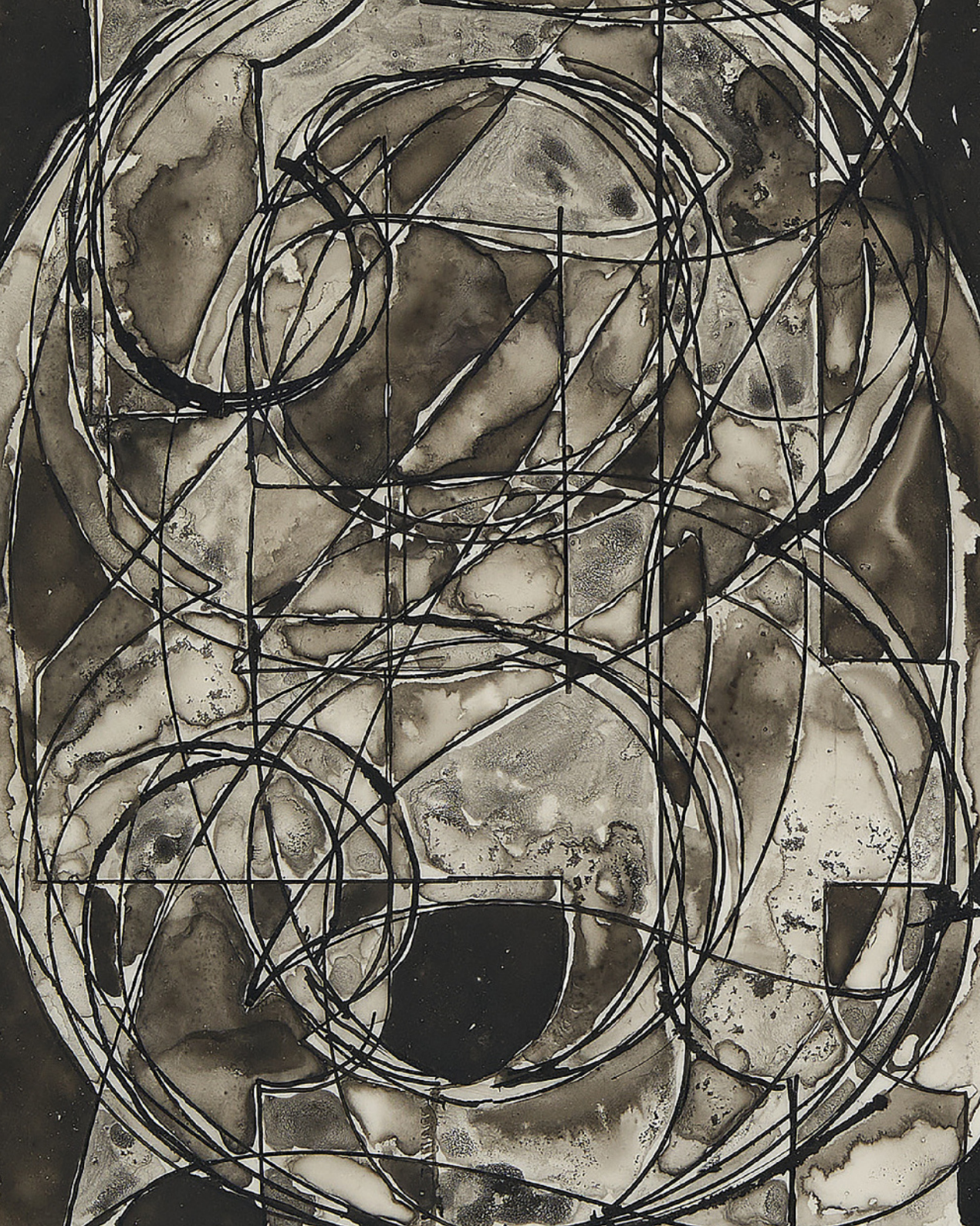












POST-WAR AND CONTEMPORARY ART DAY SALE

AUCTION

Friday 13 May 2022
at 9.30 am (Lots 101-253)
1.30 pm (Lots 301-366)
and 3.30 pm (Lots 401-531)

20 Rockefeller Plaza
New York, NY 10020

VIEWING

Saturday 30 April–Friday 13 May
Monday–Saturday 10.00–5.00 pm
Sunday 1 May 1.00 pm–5.00 pm
Sunday 8 May 10.00 am–5.00 pm

AUCTIONEERS

Adrien Meyer (#1365994)
Gemma Sudlow (#2016494)
Tash Perrin (#1039052)
David Kleiweg de Zwaan (#1365999)

AUCTION LICENSE

Christie's (#1213717)

AUCTION CODE AND NUMBER

To place bids please contact the Bid department +1 212 636 2437
Please note this sale should be referred to as **BELLYCAM-20099**

ABSENTEE AND TELEPHONE BIDS

Tel: +1 212 636 2000

BIDDING ON BEHALF OF THE SELLER

The auctioneer may, at his or her sole option, bid on behalf of the seller up to but not including the amount of the reserve either by making consecutive bids or by making bids in response to other bidders. The auctioneer will not identify these as bids made on behalf of the seller and will not make any such bids at or above the reserve.



Scan to view full auction online

CHRISTIE'S



CONTACTS

CO- HEADS OF SALE

Kathryn Widing
KWiding@christies.com
+1 917 714 6305

Rachael White Young
RRWhite@christies.com
+1 917 689 5137

HEAD OF SESSIONS

Caitlin Foreht
CForeht@christies.com
+1 917 224 9838

JUNIOR SPECIALIST

Kathryn Marber
KMarber@christies.com
+1 646 866 1871

CATALOGUERS

Taylor Nemetz
TNemetz@christies.com
+1 347 703 5270

Vanilla Anandam
VAnandam@Christies.com
+1 646 915 6573

SALE COORDINATOR

Lily Damgard
LDamgard@Christies.com
+1 917 689 4032

WE WOULD LIKE TO THANK:

Isabella Smith, Campbell Lee, Nathaniel Purdy, Helen Redmond, Haley Rosario Conde, Caitlin Chan, Anne Homans, Jack Nelson, Greg Coleman, Erica Thorpe, Rusty Riker, Matthew Masin, Corrie Searls, Kristen Hill-Clemons, Katya McCaffrey, Ahsiya Zurita, Stephen Jones, Mimi Warner, Samantha Smith, Paris Tully, Emily Bivins, Emily Misencik, Brian Evans, Olivia Schiff, Lindsay Griffith, Kristen France, Scott Marston, Ben Egan, Becca Mount, Hans Wolf-Guzman, Aaron Young, Michael Bucaria, Kathryn Mooney

ESTIMATES AND RESERVES

Estimates are based on the condition, rarity, quality and provenance of the lots and on prices recently paid at auction for similar property. Estimates can change. No bidder or other person may rely on any estimates as a prediction or guarantee of the actual selling price of a lot or its value for any other purpose. Estimates do not include the buyer's premium or any applicable taxes. Each lot is subject to a reserve unless marked with the no reserve symbol.

FURTHER INFORMATION – NOT A CATALOGUE

This is not a catalogue for the auction. The sale of each lot is subject to the Conditions of Sale, Important Notices, and Explanation of Cataloguing Practice which are set out online, with other important sale information, at christies.com.

SYMBOLS USED IN THIS PUBLICATION AND IMPORTANT NOTICES

Please see the Conditions of Sale at christies.com for full descriptions of the symbols used in this section and for other important sale information. Please note that all lots are marked as a convenience to you and we shall not be liable for any errors in, or failure to, mark a lot.

SYMBOLS

- ◊ Christie's has a direct financial interest in the lot.
- ▲ Owned by Christie's or another Christie's Group company in whole or in part.
- ◆ Christie's has a direct financial interest in the lot and has funded all or part of our interest with the help of someone else.
- ⌘ Bidding by interested parties.
- Lot offered without reserve which will be sold to the highest bidder regardless of the pre-sale estimate in the catalogue.
- Lot incorporates material from endangered species which could result in export and/or import restrictions.
- See Storage and Collection pages in the catalogue for this sale.



2021 SCHEDULE OF SALES

Monday 9 May, 7:00PM

The Collection of Thomas and Doris Ammann Evening Sale

Tuesday 10 May, 7:00PM

21st Century Evening Sale

Wednesday 11 May, 11:00AM

Guy Laliberté Collection

Thursday 12 May, 7:00PM

The Collection of Anne H. Bass

Immediately followed by 20th Century Evening Sale

Friday 13 May

Post-War and Contemporary Art Day Sale: Session I

9:30AM

The Collection of Thomas and Doris Ammann Day Sale: Session II

1:30PM

Post-War and Contemporary Art Day Sale: Session III

3:30PM

Saturday 14 May

The Surrealist World of Rosalind Gersten Jacobs and Melvin Jacobs

9:30AM

Impressionist and Modern Art Works on Paper

11:30AM

Impressionist and Modern Art Day Sale

2:00PM

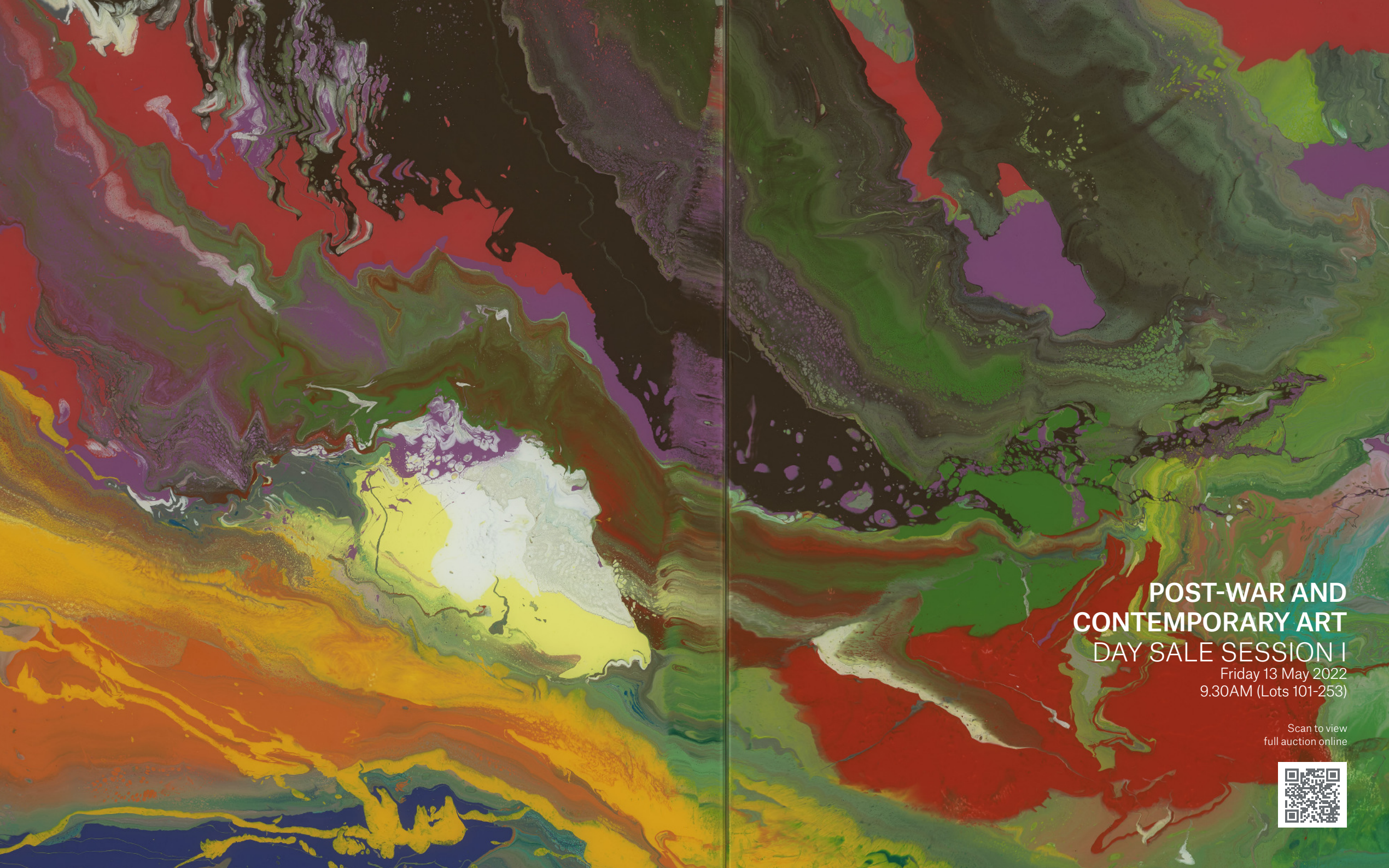
2 – 16 May

Picasso Ceramics Online

2-18 May

The Surrealist World of Rosalind Gersten Jacobs and Melvin Jacobs

Online

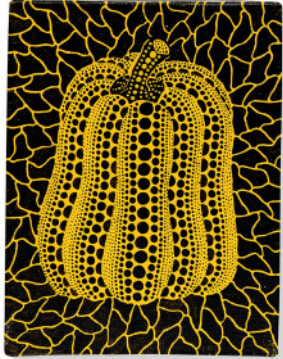


**POST-WAR AND
CONTEMPORARY ART
DAY SALE SESSION I**

Friday 13 May 2022
9.30AM (Lots 101-253)

Scan to view
full auction online





101

YAYOI KUSAMA (B. 1929)

Pumpkin

signed, titled in Japanese and dated 'Yayoi Kusama 1989'
(on the reverse)
acrylic on canvas
7 x 5½ in. (17.8 x 14.2 cm.)
Painted in 1989.

\$250,000-350,000

104

JULIE MEHRETU (B. 1970)

Untitled

acrylic, ink and graphite on wood panel
18 x 24 in. (45.7 x 61 cm.)
Executed in 2012.

\$300,000-500,000



102

STANLEY WHITNEY (B. 1946)

This Array of Colors

signed, titled and dated '2014 "This Array of Colors"
Stanley Whitney' (on the reverse)
oil on canvas
48 x 48 in. (122 x 122 cm.)
Painted in 2014.

\$350,000-550,000

SOLD BY THE FARNSWORTH ART MUSEUM WITH PROCEEDS
DEDICATED TO THE ACQUISITIONS FUND

105

LYNNE DREXLER (1928-1999)

Herbert's Garden

signed, titled and dated 'Lynne Drexler Herbert's Garden 1960'
(on the reverse)
oil on canvas
63¾ x 83½ in.
Painted in 1960.

\$70,000-100,000



103

SHARA HUGHES (B. 1981)

Weeping Blur

signed, inscribed, titled and dated "'Weeping Blur"
SHARA HUGHES 2018 NYC' (on the reverse)
oil and dye on canvas
57¾ x 50 in. (147 x 127 cm.)
Executed in 2018.

\$400,000-600,000

PROPERTY FROM THE FAMILY OF NINA VAN RENSSLAER

106

WAYNE THIEBAUD (1920 - 2021)

Three Ice Cream Cones

incised with the artist's signature and date 'Thiebaud 1964'
(lower right)
oil on canvas
12 x 15 in. (30.5 x 38.1 cm.)
Painted in 1964.

\$2,500,000-3,500,000





PROPERTY FROM THE FAMILY OF NINA VAN RENSSELAER
107

WAYNE THIEBAUD (1920 - 2021)

Yo-Yos

incised with the artist's signature and date 'Thiebaud 1963' (lower left); signed thrice, titled and dated 'Thiebaud 'Yo-Yos' Thiebaud '63 Thiebaud' (on the stretcher)
oil on canvas
12 x 12 in. (30.5 x 30.5 cm.)
Painted in 1963.

\$2,000,000-3,000,000

110

OLUWOLE OMOFEMI (B. 1988)

Yesterday has gone

signed 'Oluwole Omofemi' (lower right)
oil and acrylic on canvas
41.7/10 x 47.1/5 in. (106 x 120 cm.)
Painted in 2021.

\$30,000-50,000



108

AMOAKO BOAFO (B.1984)

Shades of Brown

signed, inscribed and dated 'AMOAKO M BOAFO 2019 KING' (lower right)
oil on canvas
88 x 77 in. (223.5 x 195.6 cm.)
Painted in 2019.

\$400,000-600,000

111

NICOLAS PARTY (B. 1980)

Portrait

pastel on canvas
39¼ x 35½ in. (100 x 90 cm.)
Executed in 2014.

\$300,000-500,000



109

GODWIN CHAMPS NAMUYIMBA (B. 1989)

Inside the Black Golf Closet

signed, titled and dated 'Namuyimba Inside the Black Golf Closet 2021' (on the reverse)
acrylic and mixed media on canvas
78½ x 57¾ in. (200 x 146.7 cm.)
Executed in 2021.

\$40,000-60,000

PROPERTY FROM AN IMPORTANT PRIVATE COLLECTION

112

GEORGE CONDO (B. 1957)

The Diver

acrylic on canvas
60 x 48 in. (152.4 x 121.9 cm.)
Painted in 2001.

\$600,000-800,000





113

EDGAR PLANS (B. 1977)
Bicycle Version (Basquiat Tribute)

signed, titled and dated "Bicycle Version"
BASQUIAT TRIBUTE 2019' (on the reverse)
mixed media on canvas
40 x 40 in. (100 x 100 cm.)
Executed in 2019.

\$50,000-70,000



114

EMMANUEL TAKU (B. 1986)
Purple Sisters Embrace

signed and dated 'Taku 2021' (lower right)
oil, acrylic and mixed media on canvas
78¾ x 50 in. (200 x 127 cm.)
Executed in 2021.

\$40,000-60,000



115

ALLISON ZUCKERMAN (B. 1990)
Memory Room

signed and dated 'Allison Zuckerman 2020' (on the stretcher)
acrylic and archival CMYK ink on canvas
84 x 68 in. (213.4 x 172.7 cm.)
Executed in 2020.

\$70,000-100,000

116

JORDY KERWICK (B. 1982)
Untitled

signed and dated 'Jordy Kerwick 2021' (on the reverse)
oil on canvas
39¾ x 31¾ in. (100 x 80 cm.)
Painted in 2021.

\$30,000-50,000



117

SCOTT KAHN (B. 1946)
The Daniels' Garden at L'Angle D'Oie

signed and dated 'Scott Kahn '00' (lower right); signed again twice,
inscribed, titled and dated again twice 'THE DANIELS' GARDEN AT
L'ANGLE D'OIE KAHN 2000 © 2000 by Scott Kahn' (on the overlap)
oil on canvas
16 x 20 in. (40.6 x 50.8 cm.)
Painted in 2000.

\$75,000-95,000



118

SCOTT KAHN (B. 1946)
Pennsylvania New Jersey Border

signed and dated 'Scott Kahn '93' (lower right); signed again twice,
titled and dated again twice 'PENNSYLVANIA NEW JERSEY
BORDER KAHN 1993 © 1993 by Scott Kahn' (on the overlap)
oil on canvas
36 x 40 in. (91.4 x 101.6 cm.)
Painted in 1993.

\$150,000-200,000





119

MATTHEW WONG (1984-2019)

Mili's Corner

signed in Chinese, titled and dated in Chinese
 'Mili's Corner' (on the reverse)
 oil on canvas
 24 x 20 in. (61 x 50.8 cm.)
 Painted in 2019.

\$380,000-450,000

122

WAYNE THIEBAUD (1920-2021)

Downhill Intersection

incised with the artist's signature and date 'Thiebaud 10' (lower left);
 signed again and dated again 'Thiebaud 2010' (on the reverse)
 oil on board
 16 7/8 x 14 in. (42.9 x 35.6 cm.)
 Painted in 2010.

\$800,000-1,200,000



120

HELEN FRANKENTHALER (1928-2011)

Crete

signed 'Frankenthaler' (lower right)
 acrylic and marker on canvas
 86 x 133 in. (218.4 x 337.8 cm.)
 Painted in 1973.

\$1,500,000-2,000,000

ART FOR VACCINES: PROPERTY SOLD TO BENEFIT CARE'S GLOBAL COVID-19 RESPONSE

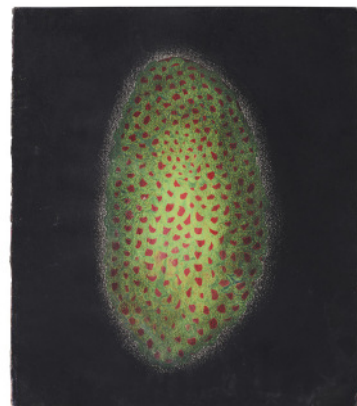
123

ROY LICHTENSTEIN (1923-1997)

Collage for CARE Poster

signed and dated 'rf Lichtenstein '93' (on the reverse)
 acrylic, tape and printed paper collage on board
 image: 39 3/4 x 27 in. (101 x 68.6 cm.)
 sheet: 52 x 38 1/2 in. (132.1 x 96.8 cm.)
 Executed in 1993.

\$200,000-300,000



121

YAYOI KUSAMA (B. 1929)

Flower

signed, inscribed, titled and dated 'YAYOI KUSAMA 1953.A FLOWER'
 (on the reverse)
 pastel on paper
 14 1/2 x 12 1/2 in. (36.8 x 31.8 cm.)
 Executed in 1953.

\$120,000-180,000

124

JEFF KOONS (B. 1955)

Jim Beam - Caboose

stainless steel and bourbon, in two parts
 8 x 14 1/2 x 6 1/2 in. (20.3 x 36.8 x 16.5 cm.)
 Executed in 1986. This work is the artist's proof aside from an edition of three plus one artist's proof and is accompanied by a certificate of authenticity signed by the artist.

\$700,000-1,000,000





°◆125

ROY LICHTENSTEIN (1923-1997)

Head with Braids

signed and dated '© rf Lichtenstein '79' (on the reverse)
oil and Magna on canvas
50 x 40 in. (127 x 101.6 cm.)
Painted in 1979.

\$2,000,000-3,000,000

PROPERTY FROM AN IMPORTANT PRIVATE COLLECTION

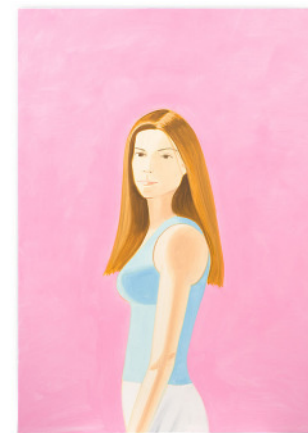
128

ALEX KATZ (B. 1927)

Kristen

signed and dated 'Alex Katz 05' (on the overlap)
oil on linen
84 x 60 in. (213.4 x 152.4 cm.)
Painted in 2005.

\$300,000-500,000



126

ANDY WARHOL (1928-1987)

Marilyn Monroe (Marilyn)

signed and stamp-numbered 'Andy Warhol 108/250'
(on the reverse of each sheet)
screenprint in colors on paper, in ten parts
each: 36 x 36 in. (91.4 x 91.4 cm.)
Executed in 1967. This complete set is number 108
from an edition of 250.

\$1,500,000-2,500,000

129

JOHN WESLEY (1928-2022)

Untitled

signed and dated 'John Wesley 2011' (on the reverse)
acrylic on canvas
44 x 66 in. (111.8 x 167.6 cm.)
Painted in 2011.

\$100,000-150,000



°127

ANDY WARHOL (1928-1987)

Dollar Sign

stamped with the Estate of Andy Warhol and the Andy Warhol
Foundation for the Visual Arts, Inc. stamps and numbered 'PA30.086'
(on the overlap); stamped with the Andy Warhol Foundation for the
Visual Arts, Inc. stamp again (on the reverse)
acrylic and silkscreen ink on canvas
20 x 16 in. (50.8 x 40.6 cm.)
Painted in 1981.

\$400,000-600,000

PROPERTY FROM A NEW YORK CHARITABLE FAMILY TRUST

°130

ROGER BROWN (1941-1997)

Cloud Cover

titled 'CLOUD COVER' (on the overlap)
oil on canvas
72 x 47 1/2 in. (182.9 x 121.3 cm.)
Painted in 1979.

\$60,000-80,000





131

ANDY WARHOL (1928-1987)

Campbell's Soup

signed and dated 'Andy Warhol 86' (on the overlap)
acrylic and silkscreen ink on canvas
72 x 60 in. (182.9 x 152.4 cm.)
Painted in 1986.

\$400,000-600,000

PROPERTY FROM AN IMPORTANT PRIVATE COLLECTION

134

JOHN BALDESSARI (1931-2020)

Two Cars (One Red) in Different Environments

acrylic and vinyl on photographs, in two parts
69 x 87 in. (175.3 x 221 cm.)
Executed in 1990.

\$300,000-500,000



132

WAYNE THIEBAUD (1920 - 2021)

Jawbreaker Machine

signed and dated '♥ Thiebaud 1990' (lower right)
pastel over linocut on paper
image: 21½ x 16 in. (54.6 x 40.6 cm.)
sheet: 30¾ x 22½ in. (30.3 x 22.5 cm.)
Executed in 1990. This work is a unique hand-colored artist's proof
aside from an edition of fifty.

\$350,000-550,000

PROPERTY FROM AN IMPORTANT PRIVATE COLLECTION

135

JAMES ROSENQUIST (1933-2017)

Untitled

signed and dated "JAMES ROSENQUIST 1981" (on the reverse)
oil on canvas mounted on panel
40 x 40 in. (101.6 x 101.6 cm.)
Painted in 1981.

\$250,000-350,000



133

ALEX KATZ (B. 1927)

Man with Brown Hat

signed and dated 'alex katz 2/79' (on the overlap)
oil on canvas
96 x 72 in. (243.8 x 182.9 cm.)
Painted in 1979.

\$700,000-1,000,000

136

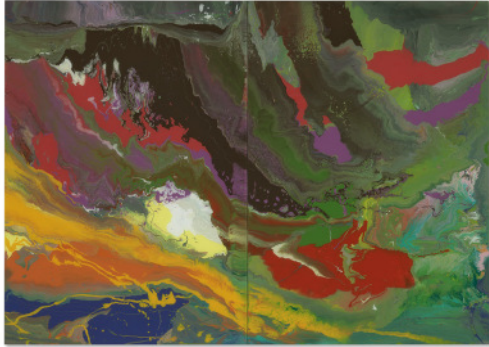
FRANK STELLA (B. 1936)

Hagmatana I

acrylic and graphite on shaped canvas
120 x 180 in. (304.8 x 457.2 cm.)
Painted in 1967.

\$700,000-1,000,000





137

GERHARD RICHTER (B. 1932)

Flow (933-1)

signed, inscribed and dated '933-1 Richter 2013' (on the reverse)
diptych—lacquer on glass mounted on Alu Dibond
47¼ x 67 in. (120 x 170.2 cm.)
Executed in 2013.

\$500,000-700,000

PROPERTY FROM AN IMPORTANT EUROPEAN PRIVATE COLLECTION

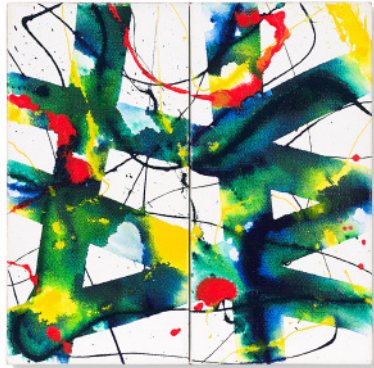
140

ALEXANDER CALDER (1898-1976)

Untitled

incised with the artist's monogram and date 'CA 70'
(on the standing element)
standing mobile—sheet metal, wire and paint
22¼ x 27 x 24 in. (57.8 x 68.6 x 61 cm.)
Executed in 1970.

\$450,000-650,000



PROPERTY FROM AN IMPORTANT PRIVATE COLLECTION

138

SAM FRANCIS (1923-1994)

Untitled

signed and dated 'Sam Francis 1988' (on the reverse of the left panel)
diptych—acrylic on canvas
overall: 24 x 24 in. (61 x 61 cm.)
Painted in 1988.

\$60,000-80,000

PROPERTY OF AN IMPORTANT AMERICAN COLLECTION

141

ERNIE BARNES (1938 - 2009)

Storm Dance

signed 'ERNIE BARNES' (lower right)
acrylic on canvas, in artist's frame
48¾ x 24¾ in. (123.8 x 62.9 cm.)
Painted in 1977.

\$100,000-150,000



PROPERTY FROM AN IMPORTANT PRIVATE COLLECTION

139

SAM FRANCIS (1923-1994)

Untitled

signed twice 'Sam Francis Sam Francis' and stamped with the
Estate of Sam Francis stamp (on the reverse); numbered SFP.65.28'
(on the overlap)
acrylic on canvas
60 x 70 in. (152.4 x 177.8 cm.)
Painted in 1965.

\$200,000-300,000

142

CHARLES WHITE (1918-1979)

Study for 'The Contribution of the Negro to Democracy in America'

signed and dated 'Charles White '43' (lower right)
tempera and graphite on illustration board
17¾ x 26¼ in. (44.7 x 66.7 cm.)
Executed in 1943.

\$600,000-800,000





PROPERTY FROM THE COLLECTION OF HURDLE H. LEA

143

ROMARE BEARDEN (1911-1988)

Profile/Part I, The Twenties: Mecklenburg County, Liza in High Cotton

signed 'Romare Bearden' (upper left); inscribed 'I couldn't play with liza yesterday her grandmother said she was in the fields.' (on the reverse)
acrylic, watercolor, ink, graphite, printed paper and fabric collage on board
17½ x 32¾ in. (44.5 x 83.2 cm.)
Executed in 1978.

\$250,000-350,000

146

CRAIG KAUFFMAN (1932-2010)

Untitled

incised with the artist's initials and date 'CRAIG KAUFFMAN 66' (on the reverse)
acrylic lacquer on vacuum formed Plexiglas
66½ x 35½ x 5 in. (168.9 x 90.2 x 12.7 cm.)
Executed in 1966.

\$50,000-70,000



COOL
PROPERTY FROM
THE LORNA LEE STEARNS COLLECTION



144

ED RUSCHA (B. 1937)

Western with Fly

signed, inscribed and dated 'E. RUSCHA 1967 - gp' (lower left)
gunpowder on paper
14¼ x 22¾ in. (35.9 x 58.1 cm.)
Executed in 1967.

\$400,000-600,000

147

BILLY AL BENGSTON (B. 1934)

The Mild One

signed and dated 'Bengston 1963' (on the reverse)
oil and sprayed lacquer on Masonite
62½ x 49 in. (158.8 x 124.5 cm.)
Painted in 1963.

\$50,000-70,000



145

LARRY BELL (B. 1939)

Untitled Glass Sculpture (Clear/Silver)

coated glass and metal, with Plexiglas base
cube: 10¼ x 10¼ x 10¼ in. (26 x 26 x 26 cm.)
base: 48 x 10¼ x 10¼ in. (121.9 x 26 x 26 cm.)
overall: 58¼ x 10¼ x 10¼ in. (148 x 26 x 26 cm.)
Executed in 1965.

\$50,000-70,000



~148

EDWARD KIENHOLZ (1927-1994)

Marlena Deepdich or a Portable Success Story

incised with the title 'MARLENA DEEPDICH OR A PORTABLE SUCCESS STORY' (on a metal plaque affixed to the base)
box assemblage - wood, oil, canvas, nails, plastic and sheep's head
open: 24 x 35 x 11 in. (61 x 88.9 x 27.9 cm.)
closed: 24 x 17 x 11 in. (61 x 43.2 x 27.9 cm.)
Executed in 1961.

\$20,000-30,000





149

KENNETH PRICE (1935-2012)

Untitled

painted and glazed ceramic
3¼ x 6 x 3½ in. (8.3 x 15.2 x 8.9 cm.)
Executed circa 1966-1970.

\$4,000-6,000



150

RON NAGLE (B. 1939)

Untitled

painted and glazed ceramic
3¾ x 4 x 3½ in. (9.2 x 10.2 x 7.9 cm.)
Executed in 1975.

\$6,000-8,000



151

KENNETH PRICE (1935-2012)

Kauai Rock Cup

signed, titled and dated "'KAUAI ROCK CUP" PRICE '70' (lower right)
acrylic, colored pencil and ink on paperboard
22 x 18 in. (55.9 x 45.7 cm.)
Executed in 1970.

\$15,000-20,000

152

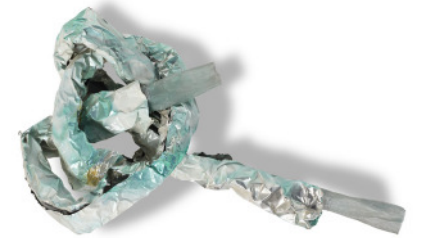
LYNDA BENGLIS (B. 1941)

Klaus

aluminum wire mesh, aluminum foil and enamel

53 x 18 x 12 in. (134.6 x 45.7 x 30.5 cm.)
Executed in 1974.

\$70,000-100,000



153

LYNDA BENGLIS (B. 1941)

Dill

aluminum wire mesh, aluminum foil, sparkles, sculp-metal and lacquer

53½ x 19 x 15 in. (135.9 x 48.3 x 38.1 cm.)
Executed in 1974.

\$60,000-80,000



PROPERTY FROM AN IMPORTANT PRIVATE COLLECTION

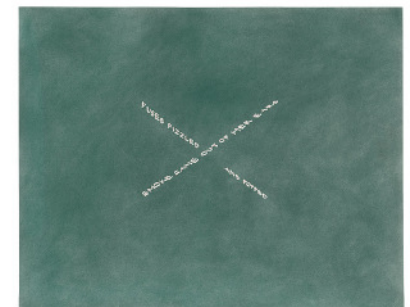
154

ED RUSCHA (B. 1937)

*Smoke Came Out of Her Ears, Fuses Fizzled
and Popped*

signed and dated 'Edward Ruscha 1976' (on the reverse)
pastel on paper
22¾ x 28½ in. (57.8 x 72.7 cm.)
Executed in 1976.

\$300,000-500,000





155

RICHARD SERRA (B.1938)

Rondo

paintstick on handmade paper
40 x 40 in. (101.6 x 101.6 cm.)
Executed in 2007.

\$600,000-800,000

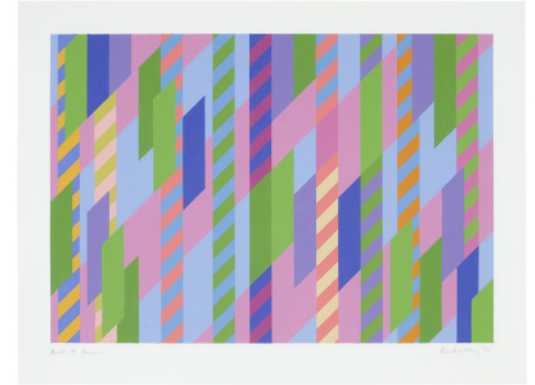
158

BRIDGET RILEY (B. 1931)

April 17 Bassacs '95

signed, titled and dated 'April 17 Bassacs Bridget Riley '95'
(lower edge)
gouache on paper
26 x 34¼ in. (66 x 87 cm.)
Painted in 1995.

\$180,000-250,000



156

ELLSWORTH KELLY (1923-2015)

Untitled - Green with Red

signed 'Kelly' (lower right)
tempera on paper
30½ x 21½ in. (76.5 x 54.6 cm.)
Painted circa 1964-1965.

\$150,000-200,000

159

RUDOLF STINGEL (B. 1956)

Untitled

oil and enamel on linen
110 x 71 in. (280 x 180 cm.)
Painted in 1989.

\$500,000-700,000



◊157

DONALD JUDD (1928-1994)

Untitled

stamped 'DONALD JUDD 91-173 © ALUMINIUM AG MENZIKEN'
(on the reverse)
clear anodized aluminum with transparent green Plexiglas
9¾ x 39¾ x 9¾ in. (25 x 100 x 25 cm.)
Executed in 1991.

\$450,000-650,000



160

LYNDA BENGLIS (B. 1941)

Ruxton

bronze wire mesh, sprayed zinc, bronze and nickel-chrome plating
51 x 30 x 8 in. (129.54 x 76.2 x 20.32 cm)
Executed in 1985.

\$200,000-300,000





PROPERTY FROM A PRIVATE AMERICAN COLLECTION

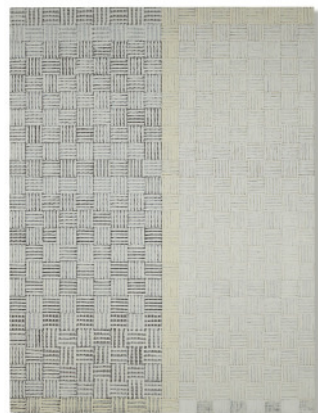
161

RONI HORN (B. 1955)

When Dickinson Shut Her Eyes, no. 886

stamped with the number '886' (at one end of each element)
 plastic and aluminum, in eight parts
 each ranging from: 20% x 2 x 2 in. (52.3 x 5.1 x 5.1 cm.) to 54% x 2 x 2 in.
 (138.6 x 5.1 x 5.1 cm.)
 (overall installation dimensions variable)
 Executed in 1993. This work is from an edition of three.

\$180,000-250,000



PROPERTY FROM A NEW YORK CHARITABLE FAMILY TRUST

°162

MCARTHUR BINION (B. 1946)

DNA Study: III

ink, laser print collage, oilstick and Staonal crayon on panel
 96 x 72 in. (243.8 x 182.9 cm.)
 Executed in 2014.

\$80,000-120,000



PROPERTY FROM AN IMPORTANT PRIVATE COLLECTION

163

JACQUELINE HUMPHRIES (B. 1960)

Untitled

oil and enamel on linen
 38 x 40 in. (96.5 x 101.6 cm.)
 Painted in 2012.

\$70,000-100,000

PROPERTY FROM A NEW YORK CHARITABLE FAMILY TRUST

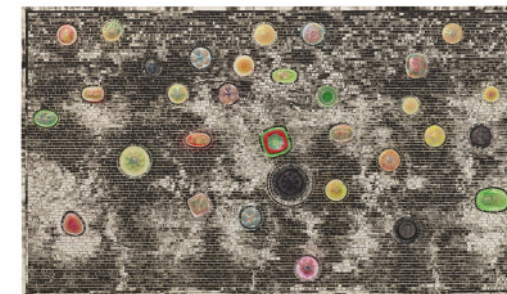
°164

JACK WHITTEN (1939-2018)

Cultural Shift (Let's Celebrate Lena Horne) A.K.A. The Lena Horne Jubilee

signed, titled and dated 'CULTURAL SHIFT (LET'S CELEBRATE LENA HORNE) (A.K.A. THE LENA HORNE JUBILEE) MAY 2010 JACK WHITTEN' (on the reverse)
 acrylic and Styrofoam plates on canvas
 48% x 82% in. (122.3 x 208.6 cm.)
 Executed in 2010.

\$700,000-1,000,000



165

LUCAS SAMARAS (B. 1936)

Box #40

wood box construction— paint, yarn, mirror, tacks, nails
 and photograph
 dimensions variable
 open: 14 x 40% x 12 1/4 in. (35.6 x 101.9 x 31.1 cm.)
 closed: 14 x 16% x 12% in. (35.6 x 41.3 x 31.1 cm.)
 Executed in 1965.

\$180,000-250,000



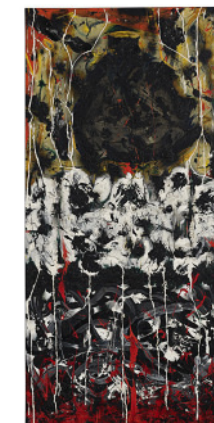
166

ALFONSO OSSORIO (1901-1985)

Nevertheless

signed twice, titled, inscribed and dated 'Alfonso Ossorio 7 Going Downs "Nevertheless" 19. IX '58 No. 17. '58 A.O.' (on the reverse)
 oil on canvas
 76 x 38 in. (193 x 96.5 cm.)
 Painted in 1957-1958.

\$200,000-300,000





167

BEAUFORD DELANEY (1901-1979)

Untitled

signed, inscribed, dedicated and dated 'Beauford Delaney Paris 1967
For Mme Mary Callery with friendship' (on the reverse)
oil on canvas
16½ x 10½ in. (41 x 27 cm.)
Painted in 1967.

\$70,000-100,000



168

LYNDA BENGLIS (B. 1941)

Shareer

gold leaf, oil-based size, gesso, plaster, cotton and chicken wire
33 x 28 x 15 in. (83.8 x 71.1 x 38.1 cm.)
Executed in 1980.

\$80,000-120,000



169

LYNDA BENGLIS (B. 1941)

Aquanot #33

signed and dated 'Benglis 80' (on the reverse)
gouache and cast pigmented paper construction
48 x 32 x 6 in. (121.9 x 81.3 x 15.2 cm.)
Executed in 1980.

\$40,000-60,000

170

CLAES OLDENBURG (B. 1929)

Alphabet/Good Humor Side B

wax crayon and graphite on paper
35 x 25 in. (88.9 x 63.5 cm.)
Executed in 1974.

\$70,000-90,000



171

CLAES OLDENBURG (B. 1929)

Alphabet/Good Humor

incised with the artist's signature 'Oldenburg' (on the base); stamped
with the artist's signature, title, number and date 'ALPHABET / GOOD
HUMOR 7/12 © 1975 CLAES OLDENBURG' (on the base)
painted fiberglass, with bronze base

35½ x 20 x 11½ in. (90.2 x 50.8 x 28.3 cm.)
Executed in 1975. This work is number seven from an edition of twelve.

\$250,000-350,000



172

JASPER JOHNS (B. 1930)

0 through 9

signed, inscribed and dated 'ST. MARTIN 18 FEB J. JOHNS '79'
(lower edge)
ink on plastic
12 x 10¾ in. (30.48 x 27.31 cm.)
Executed in 1979.

\$1,000,000-1,500,000





173

JOHN CHAMBERLAIN (1927-2011)

Tonk #15-86

painted steel
10¼ x 21¼ x 14½ in. (26 x 54 x 36.8 cm.)
Executed in 1986.

\$100,000-150,000

176

AD REINHARDT (1913-1967)

Untitled

signed and dated 'Ad Reinhardt 1946' (on the stretcher)
oil on canvas
50 x 20 in. (127 x 50.8 cm.)
Painted in 1946.

\$800,000-1,200,000



174

SOL LEWITT (1928-2007)

Horizontal Lines in Black and Gray

gouache on paper
30 x 60 in. (76.2 x 152.4 cm.)
Executed in 2004.

\$40,000-60,000

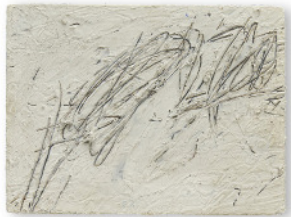
177

SOL LEWITT (1928-2007)

Splotch #19

fiberglass
68 x 68 x 68 in. (172.7 x 172.7 x 172.7 cm.)
Executed in 2005.

\$70,000-90,000



175

CY TWOMBLY (1928-2011)

Untitled (Rome)

white lead and lead pencil on panel
7 x 9¾ in. (17.8 x 23.8 cm.)
Painted in 1957.

\$150,000-200,000

178

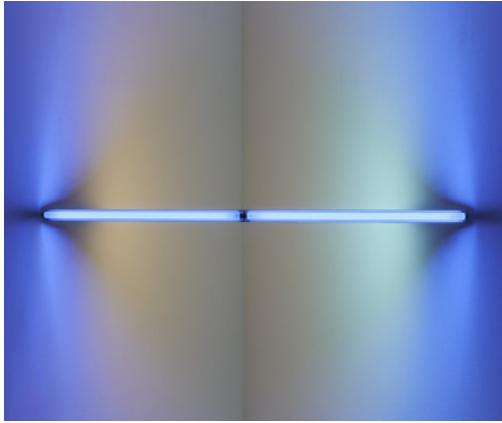
RON GORCHOV (1930-2020)

Gossip

signed, titled and dated twice 'GOSSIP 1976 © RON GORCHOV 1976'
(on the stretcher)
oil on shaped canvas
29 x 15 in. (73.7 x 38.1 cm.)
Painted in 1976.

\$15,000-20,000





179

DAN FLAVIN (1933-1996)*Untitled*

blue, daylight, cool white and warm white fluorescent light
width: 96 in. (244 cm.)

Executed in 1969. This work is number one from an edition of five, of which two were fabricated, and is accompanied by a certificate of authenticity signed by the artist.

\$250,000-350,000

182

CLAES OLDENBURG (B. 1929)*Tomb Design for Marilyn Monroe - Second Version*

signed with the artist's initials and dated 'C.O. 75' (lower right)
watercolor, wax crayon and graphite on paper
40 x 30 in. (101.6 x 76.2 cm.)
Executed in 1975.

\$40,000-60,000



180

ANDY WARHOL (1928-1987)*The Men in Her Life (Mike Todd and Eddie Fisher)*

signed 'Andy Warhol' (on the overlap)
silkscreen ink, graphite and watercolor on canvas
13 x 80 in. (33 x 203.2 cm.)
Executed in 1962.

\$200,000-300,000



183

MARTIN PURYEAR (B. 1941)*Lurk*

painted pine
21¼ x 61¼ x 7¼ in. (55.3 x 155.6 x 18.4 cm.)
Executed in 1984.

\$400,000-600,000



181

JOHN BALDESSARI (1931-2020)*Midget and Leaping Cat (Version 1)*

black and white photograph
36 x 48 in. (91.4 x 121.9 cm.)
Executed in 1984.

\$100,000-150,000

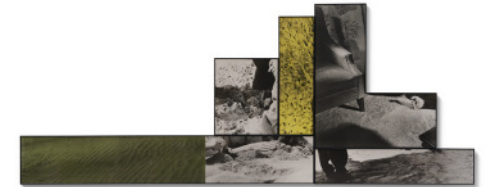


184

JOHN BALDESSARI (1931-2020)*Oasis*

black-and-white photograph with oil tint, in six parts
55 x 144 in. (139.7 x 365.8 cm.)
Executed in 1988.

\$250,000-350,000





185

JOHN CHAMBERLAIN (1927-2011)

Trumpery Praxis

painted and chromium-plated steel, in two parts
126 x 69 x 46 in. (320 x 175.3 x 116.8 cm.)
Executed in 1984.

\$400,000-600,000



188

CLAES OLDENBURG (B. 1929)

Knife Slicing Through the Wall

stainless steel
72 x 144 in. (182.9 x 365.8 cm.)
Executed in 1989.

\$300,000-500,000



186

CLAES OLDENBURG (B. 1929)

3-Way plug, Scale C, Soft

zipper, string, lead, acrylic and graphite on sewn canvas construction,
with artist's base and Plexiglas vitrine
40¼ x 25 x 24¾ in. (102.2 x 63.5 x 62.9 cm.)
Executed in 1970.

\$120,000-180,000

189

TERRY WINTERS (B. 1949)

Caps, Stems, Gills

signed, titled and dated 'Terry Winters Caps, Stems, Gills, 1982'
(on the stretcher)
oil on canvas
60 x 84 in. (152.4 x 213.4 cm.)
Painted in 1982.

\$50,000-70,000



187

SARAH CHARLESWORTH (1947-2013)

Leaf Frame

Fuji Crystal Archive print
40 x 31½ in. (101.6 x 80.3 cm.)
Executed in 2002. This work is number two from an edition of eight.

\$8,000-12,000

190

DAVID SMITH (1906-1965)

Untitled

oil on Masonite
10 x 8 in. (25.4 x 20.3 cm.)
Painted in 1957.

\$30,000-50,000





191
HANNAH WILKE (1940-1993)
Untitled
 painted ceramic
 3¼ x 6¾ x 3½ in. (8.3 x 17.2 x 8.9 cm.)
 Executed in 1972.
 \$6,000-8,000

°194
CINDY SHERMAN (B. 1954)
Untitled
 signed, numbered and dated 'Cindy Sherman 1/10 1981'
 (on a paper label affixed to the reverse)
 chromogenic color print
 24 x 48 in. (61 x 121.9 cm.)
 Executed in 1981. This work is number one from an edition
 of ten plus two artist's proofs.
 \$400,000-600,000



192
TOM WESSELMANN (1931-2004)
Seascape #29
 signed and dated 'Wesselmann 67' (on the overlap); signed again,
 titled and dated again 'TOM WESSELMANN 1967 SEASCAPE #29'
 (on the stretcher)
 oil on shaped canvas
 108½ x 67¼ in. (275.6 x 170.8 cm.)
 Painted in 1967.
 \$1,200,000-1,800,000

°195
JOYCE PENSATO (1941-2019)
Mr. Softy
 signed, inscribed, titled and dated 'TITLED: "MR SOFTY"
 Joyce Pensato 2008' (on the reverse)
 enamel and metallic paint on canvas
 68 x 54 in. (172.1 x 137.2 cm.)
 Painted in 2008.
 \$70,000-90,000



PROPERTY FROM AN IMPORTANT PRIVATE COLLECTION
 193
BARBARA KRUGER (B. 1945)
GO/STAY
 diptych—chromogenic dye coupler print
 overall: 73¾ x 98¾ in. (186.5 x 251 cm.)
 Executed in 2007. This work is number five from an edition of ten.
 \$200,000-300,000

196
JEAN-MICHEL BASQUIAT (1960-1988)
Untitled
 signed with the artist's initials 'JMB ©' (on the reverse of the sheet)
 acrylic, oilstick and wax crayon on paper laid down on canvas
 25½ x 19¼ in. (64.8 x 50.2 cm.)
 Executed in 1981. This work is accompanied by a photo certificate and
 a certificate issued by the Authentication Committee for the Estate of
 Jean-Michel Basquiat.
 \$500,000-700,000





197

ED RUSCHA (B. 1937)

Affiliation

signed and dated 'Ed Ruscha 1987' (on the reverse); signed again, titled and dated again 'ED RUSCHA "AFFILIATION" 1987' (on the stretcher) acrylic on canvas
60 x 105 in. (152.4 x 266.7 cm.)
Painted in 1987.

\$600,000-800,000



PROPERTY FROM AN IMPORTANT PRIVATE COLLECTION

198

GEORGE CONDO (B. 1957)

French Maid with Red Hair

signed, titled and dated 'Condo 05 French Maid with Red Hair' (on the reverse)
oil on canvas, in artist's frame
17 ¼ x 15 ½ in. (43.8 x 38.4 cm.)
Painted in 2005.

\$100,000-150,000



PROPERTY FROM A PROMINENT COLLECTION

199

MARK TANSEY (B. 1949)

Study on "Installing the Lens"

signed and dated 'Tansey 2000' (upper right)
oil and graphite on canvas
36 ½ x 30 in. (91.8 x 76.2 cm.)
Executed in 2000.

\$700,000-1,000,000

200

JEAN-MICHEL BASQUIAT (1960-1988)

Untitled

signed and dated 'Basquiat 86' (on the reverse)
oilstick and wax crayon on paper
24 x 36 in. (61 x 91.4 cm.)
Executed in 1986. This work is accompanied by a certificate of authenticity issued by the Authentication Committee of the Estate of Jean-Michel Basquiat.

\$400,000-600,000



PROPERTY FROM THE ESTATE OF MARCIA MAY

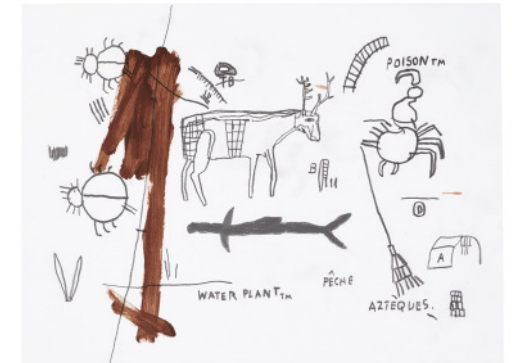
201

JEAN-MICHEL BASQUIAT (1960-1988)

Untitled

acrylic and graphite on paper
9 ½ x 12 ½ in. (24.1 x 31.8 cm.)
Executed circa 1985.

\$120,000-180,000



PROPERTY FROM THE ESTATE OF MARCIA MAY

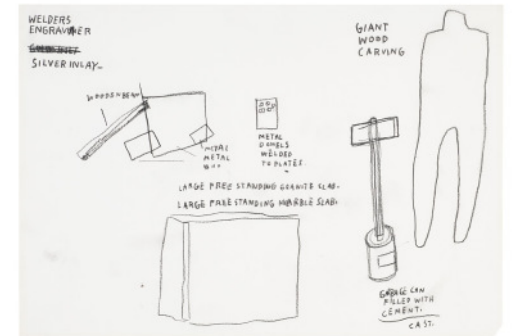
202

JEAN-MICHEL BASQUIAT (1960-1988)

Untitled

graphite on paper
9 ¾ x 14 in. (24.8 x 35.6 cm.)
Executed circa 1985.

\$120,000-180,000





203

GERTRUDE ABERCROMBIE (1909-1977)

White Horse

signed 'Abercrombie' (lower right)
oil on Masonite
3¾ x 2½ in. (22 x 20 cm.)
framed: 5½ x 6½ in. (14 x 16.5 cm.)
Painted in 1939.

\$30,000-50,000



204

LOUIS FRATINO (B.1993)

Tristan Drinking Soup

signed and dated 'Louis Fratino 2017' (on the reverse)
oil, wax crayon and graphite on canvas
12 x 9 in. (30.5 x 22.9 cm.)
Executed in 2017.

\$50,000-70,000



205

ROBY DWI ANTONO (B. 1990)

Sense of Aurora

signed and dated 'Roby Dwi Antono 2013' (lower left)
oil on canvas
70¾ x 47¼ (180 x 120 cm.)
Painted in 2013.

\$60,000-100,000

206

SALMAN TOOR (B. 1983)

Untitled

oil on canvas
58 x 56½ in. (147.3 x 143.5 cm.)
Painted in 2014.

\$180,000-250,000



207

DANA SCHUTZ (B. 1976)

Myopic

signed and dated 'Dana Schutz 2004' (on the reverse)
oil on canvas
23¾ x 18 in. (58.7 x 45.7 cm.)
Painted in 2004.

\$70,000-90,000



208

RASHID JOHNSON (B. 1977)

First Friends

burned red oak flooring, black soap, wax and spray enamel
72½ x 49½ x 3 in. (184.2 x 125.7 x 7.6 cm.)
Executed in 2013.

\$150,000-200,000





209

AMY SILLMAN (B. 1955)

Platypus

signed and dated 'Amy Sillman 09' (on the reverse)
oil on canvas
90¼ x 84¾ in. (230.5 x 215.3 cm.)
Painted in 2009.

\$350,000-550,000

PROPERTY FROM AN IMPORTANT PRIVATE COLLECTION

212

YOSHITOMO NARA (B. 1959)

I Think, Therefore I Am...A Dog

acrylic and lacquer on fiberglass, wood and steel
83 x 53 x 37 in. (210.8 x 134.6 x 94 cm.)
Executed in 2003. This work is from an edition of six plus
two artist's proofs.

\$250,000-350,000



210

ENIWAMURA (B. 1988)

Neo-Jomon: Wild Hair (After Quarantine)

signed 'EN' (on the underside)
glazed ceramic
23¾ x 19¾ x 20¾ in. (59.9 x 50.2 x 53 cm.)
Executed in 2020. This work is unique.

\$20,000-30,000

PROPERTY FROM AN IMPORTANT PRIVATE COLLECTION

213

YOSHITOMO NARA (B. 1959)

Slash with a Knife

colored pencil on paper
11 x 8 in. (27.9 x 20.3 cm.)
Executed in 1998.

\$100,000-150,000



211

TAKASHI MURAKAMI (B. 1962) AND VIRGIL ABLOH (1980-2021)

DOB and Arrows: Patchwork Skulls

signed and dated "'VIRGIL' TAKASHI 2018' (on the overlap)
acrylic on canvas
33¾ x 23 in. (85.7 x 58.4 cm.)
Painted in 2018.

\$60,000-80,000

PROPERTY FROM AN IMPORTANT PRIVATE COLLECTION

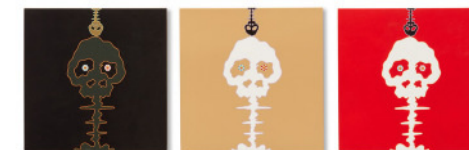
214

TAKASHI MURAKAMI (B. 1962)

Dokuro Black; Dokuro Gold & Dokuro Red (Three Works)

signed and dated 'TAKASHI. 2001' (on the reverse of each element)
acrylic on canvas laid down on panel, in three parts
each: 15.9 x 15.9 in. (40.3 x 40.3 cm.)
Executed in 2001.

\$150,000-200,000





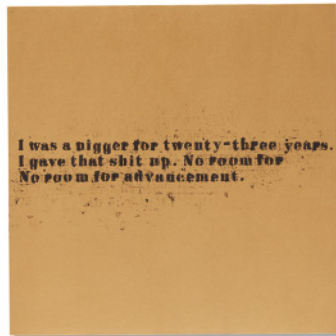
215

SUSUMU KAMIJO (B. 1975)

Poodle by Purple Sea

signed and dated 'Susumu Kamiijo 2017' (on the reverse)
oilstick, pastel and graphite on paper
50 x 38 in. (127 x 96.5 cm.)
Executed in 2017.

\$20,000-30,000



PROPERTY FROM AN IMPORTANT PRIVATE COLLECTION

216

GLENN LIGON (B. 1960)

No Room (Gold) #47

signed, titled and dated 'Glenn Ligon 2007 No Room (Gold) #47'
(on the overlap)
oil and acrylic on canvas
32 x 32 in. (81.3 x 81.3 cm.)
Executed in 2007.

\$100,000-150,000



PROPERTY FROM AN IMPORTANT PRIVATE COLLECTION

217

BRIAN CALVIN (B. 1969)

Believing

signed, titled and dated 'Brian Calvin 2005 "BELIEVING"
(on the reverse)
acrylic on canvas
24 x 48 in. (61 x 121.9 cm.)
Painted in 2005.

\$30,000-40,000

218

SHARA HUGHES (B. 1981)

Rockstar

signed 'SHARA HUGHES' (lower right); signed again, inscribed and dated 'Shara Hughes 2005 Georgia' (on the reverse)
oil on canvas
48 x 48 in. (121.9 x 121.9 cm.)
Painted in 2005.

\$150,000-200,000



219

ABOUDIA (B.1983)

Untitled

oil on canvas
59 x 59 in. (149.9 x 149.9 cm.)
Painted in 2018.

\$40,000-60,000



220

ISSHAQ ISMAIL (B. 1989)

Violet Face 5

signed 'Isshaq' (lower left)
acrylic on canvas
59½ x 49½ in. (151.5 x 125.8 cm.)
Painted in 2021.

\$60,000-80,000





221

LINCOLN TOWNLEY (B. 1972)

The Partners

signed twice and dated 'Lincoln Townley LT 2018' (on the reverse)
oil on canvas
23½ x 23½ in. (59.7 x 59.7 cm.)
Painted in 2018.

\$50,000-70,000



PROPERTY FROM AN IMPORTANT PRIVATE COLLECTION

222

CARROLL DUNHAM (B. 1949)

Group D, No. 10

inscribed, titled and dated 'Quogue, New York City 1991-1992
'GROUP D #10'' (on the stretcher)
acrylic and mixed media on canvas
49¼ x 62¾ in. (125.1 x 159.7 cm.)
Executed in 1991-1992.

\$120,000-180,000



223

KENNY SCHARF (B. 1958)

FRACKATTACK

oil, acrylic, ink and synthetic polymer on canvas,
in powder coated aluminum artist's frame
90 x 70 in. (228.6 x 177.8 cm.)
Executed in 2017.

\$100,000-150,000



224

GINA BEAVERS (B. 1974)

Invisible Lip

signed and dated 'Gina Beavers 2022' (on the reverse)
acrylic and foam on linen on panel
72 x 72 x 12 in. (182.9 x 182.9 x 30.5 cm.)
Executed in 2022.

\$40,000-60,000

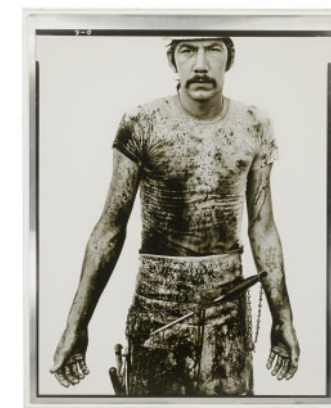
225

RICHARD AVEDON (1923-2004)

Blue Cloud Wright, Slaughterhouse Worker, Omaha, Nebraska, August 10, 1979

signed and numbered 'Avedon 6/6' and stamped with print, edition
and copyright credit (on the reverse)
gelatin silver print mounted to aluminum, in artist's frame
image/sheet: 56 x 44.5 in. (142.2 x 113 cm.)
overall: 61½ x 49 x 2½ in. (156.2 x 124.5 x 6.4 cm.)
Photographed in 1979 and printed in 1985. This work is number six
from an edition of six plus two artist's proofs.

\$250,000-350,000



226

CINDY SHERMAN (B. 1954)

Untitled B

signed, numbered and dated 'Cindy Sherman 7/10 1975'
(on the reverse)
gelatin silver print
20 x 16 in. (50.8 x 40.6 cm.)
Executed in 1975. This work is number seven from an edition
of ten.

\$25,000-35,000





°227

CINDY SHERMAN (B. 1954)

Untitled E

signed, inscribed, numbered and dated 'Cindy Sherman E 5/10 1975'
(on the reverse)
gelatin silver print
20 x 16 in. (50.8 x 40.6 cm.)
Executed in 1975. This work is number five from an edition of ten.

\$30,000-50,000

PROPERTY FROM AN IMPORTANT PRIVATE COLLECTION

230

IMI KNOEBEL (B. 1940)

Grace Kelly

acrylic and paper collage on board, in thirty-eight parts
each: 19 x 13 in. (48.3 x 33 cm.)
Executed in 1989/2005. This work is number three
from an edition of ten.

\$100,000-150,000



°228

ROBERT LONGO (B. 1953)

Jump to Life to Come

bronze
39 x 50 x 22 in. (99.1 x 127 x 55.9 cm.)
Executed in 1990. This work is unique.

\$80,000-120,000

PROPERTY FROM AN IMPORTANT PRIVATE COLLECTION

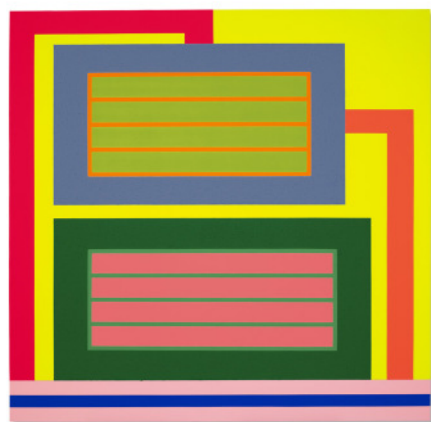
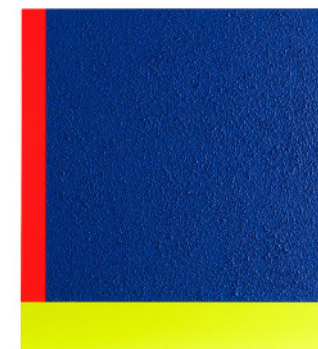
231

PETER HALLEY (B. 1953)

Blue Cell

acrylic, fluorescent acrylic and Roll-A-Tex on canvas on two
joined canvases
44 x 40¾ in. (111.8 x 103.5 cm.)
Painted in 1998.

\$40,000-60,000



PROPERTY FROM A NEW YORK CHARITABLE FAMILY TRUST

°229

PETER HALLEY (B. 1953)

Accretive Cognition

signed twice and dated 'Peter Halley Peter Halley 2009'
(on the reverse)
acrylic and Roll-A-Tex on two joined canvases
80 x 82 in. (203.2 x 208.3 cm.)
Painted in 2009.

\$80,000-120,000

232

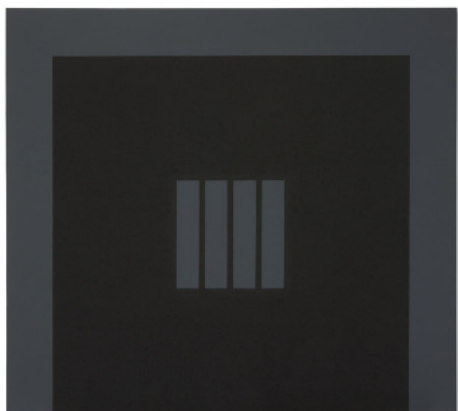
KENNY SCHARF (B. 1958)

Bobby Mandala

signed and dated 'Kenny Scharf 91-92' (on the reverse)
oil and silkscreen ink on canvas, in artist's Plexiglas mirror
and aluminum frame
72 x 62 in. (182.9 x 157.5 cm.)
Executed in 1991.

\$100,000-150,000





233

PETER HALLEY (B. 1953)

Prison

signed twice, titled and dated 'Peter Halley Peter Halley PRISON 1986' (on the reverse)
acrylic and Roll-A-Tex on canvas
72½ x 81 in. (184.5 x 206 cm.)
Painted in 1986.

\$120,000-200,000

PROPERTY FROM AN IMPORTANT PRIVATE COLLECTION

236

FRANK STELLA (B. 1936)

The Dart (D-15-IX)

enamel and spray enamel on aluminum and magnesium construction
71½ x 76 x 30 in. (181.6 x 193 x 76.2 cm.)
Executed in 1990.

\$300,000-500,000



234

KENNY SCHARF (B. 1958)

New and Improved Thermonuclear Theater

signed, titled and dated 'New and Improved Thermonuclear Theater Kenny Scharf '09' (on the reverse)
acrylic and spray paint on canvas
106 x 78 in. (269.2 x 198.1 cm.)
Painted in 2009.

\$100,000-150,000

237

KENNY SCHARF (B. 1958)

Retchmess Chunkychunky

signed, titled and dated 'Kenny Scharf 1985 Retchmess Chunkychunky' (on the reverse)
oil, acrylic, spray paint, plastic toys, feathers and tinsel collage on canvas
72 x 72 in. (182.8 cm x 182.8 cm.)
Executed in 1985.

\$200,000-300,000



PROPERTY FROM AN IMPORTANT PRIVATE COLLECTION

238

ANDY WARHOL (1928-1987)

Campbell's Chicken Noodle Soup Box

signed and dated 'Andy Warhol 86'; stamped with the Estate of Andy Warhol, the Andy Warhol Foundation for the Visual Arts Inc. and the Andy Warhol Art Authentication Board, Inc. stamps and numbered 'VF PA 90.070' and 'A143.0310' (on the overlap)
acrylic and silkscreen ink on canvas
14 x 14 in. (35.6 x 35.6 cm.)
Painted in 1986.

\$100,000-150,000



PROPERTY FROM AN IMPORTANT PRIVATE COLLECTION

235

ROBERT INDIANA (1928-2018)

LOVE

stamped with the artist's signature, number, date and foundry mark '© 1966-2001 R Indiana 4/8' (on the inside edge of the "E")
polychromed aluminum
18 x 18 x 9½ in. (45.7 x 45.7 x 24.1 cm.)
Conceived in 1966 and executed in 2001. This work is number four from an edition of eight plus four artist's proofs.

\$200,000-300,000



PROPERTY FROM AN IMPORTANT PRIVATE COLLECTION

239

ANDY WARHOL (1928-1987)

Marilyn Monroe (Marilyn): one print

signed 'Andy Warhol' (on the reverse); stamped with the Andy Warhol Art Authentication Board, Inc. stamp and numbered 'A123.066' (on the reverse)
silkscreen in colors on paper
36 x 36 in. (91.4 x 91.4 cm.)
Executed in 1967. This work is a proof aside of the edition of 250.

\$150,000-200,000

242

PHILIP GUSTON (1913-1980)

Untitled (Chair)

signed and dated 'Philip Guston '68' (lower right)
charcoal on paper
17¾ x 23¾ in. (45.1 x 6.7 cm.)
Drawn in 1968.

\$60,000-80,000



PROPERTY FROM A PROMINENT COLLECTION

240

ANDY WARHOL (1928-1987)

Car Crash

stamped and dated 'Andy Warhol Enterprises, Inc., 1978' (lower right); stamped again with the Estate of Andy Warhol and the Andy Warhol Foundation for the Visual Arts, Inc. stamps and numbered 'WP890.23' and 'A171.042' (on the reverse)
silkscreen ink on paper
image: 20% x 36% in. (53 x 92.4 cm.)
sheet: 35 x 45 in. (88.9 x 114.3 cm.)
Executed circa 1978. This work is one of a small number of impressions.

\$250,000-350,000

PROPERTY FROM AN IMPORTANT PRIVATE COLLECTION

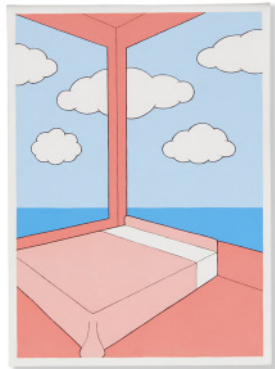
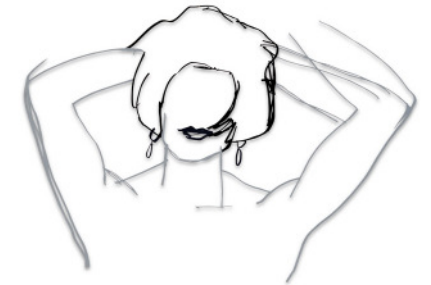
243

TOM WESSELMANN (1931-2004)

Monica Head and Shoulders

signed twice and dated twice 'Wesselmann 90 Wesselmann 90' (on the reverse)
enamel on laser-cut steel
29 x 40 in. (73.7 x 101.6 cm.)
Executed in 1990. This work is unique.

\$60,000-80,000



PROPERTY FROM AN IMPORTANT PRIVATE COLLECTION

241

JOHN WESLEY (1928-2022)

The Old Skipper's Room

signed, titled and dated "'THE OLD SKIPPER'S ROOM'
John Wesley 1980' (on the reverse)
acrylic on canvas
43½ x 32 in. (110.5 x 81.3 cm.)
Painted in 1980.

\$80,000-120,000

PROPERTY FROM AN IMPORTANT PRIVATE COLLECTION

244

JIM DINE (B. 1935)

Heart in the Sand

signed, inscribed, titled and dated 'Heart in the Sand Jim Dine July 2006 Walla Walla' (on the reverse)
oil, acrylic and sand on canvas
10% x 8¾ in. (27 x 22.2 cm.)
Executed in 2006.

\$20,000-30,000





PROPERTY FROM AN IMPORTANT PRIVATE COLLECTION

245

ROBERT INDIANA (1928-2018)

Ping (Yellow/Red/Black)

signed with the artist's initials and dated 'RI 03' (on the reverse)
oil on canvas
12% x 12% in. (32.1 x 32.1 cm.)
Painted in 2003.

\$40,000-60,000

PROPERTY FROM AN IMPORTANT PRIVATE COLLECTION

248

RICHARD PETTIBONE (B. 1938)

Andy Warhol, 'Flowers'

signed with the artist's initials and titled 'R.P. Andy Warhol' (on the stretcher)
acrylic and silkscreen ink on canvas, in artist's frame
6¼ x 6¼ in. (15.9 x 15.9 cm.)
Executed circa 1970.

\$25,000-35,000



PROPERTY FROM AN IMPORTANT PRIVATE COLLECTION

246

TOM SACHS (B. 1966)

Golden Arches (McDonald's Painting)

signed and dated 'Tom Sachs 2002' (on the stretcher)
acrylic on canvas
48 x 48 in. (121.9 x 121.9 cm.)
Painted in 2002.

\$60,000-80,000

PROPERTY FROM AN IMPORTANT PRIVATE COLLECTION

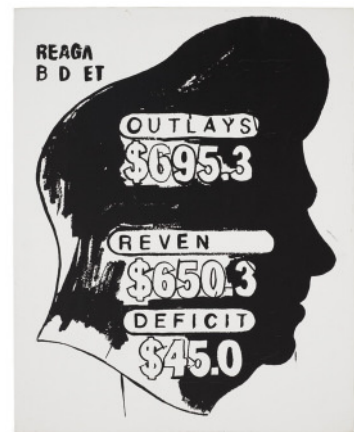
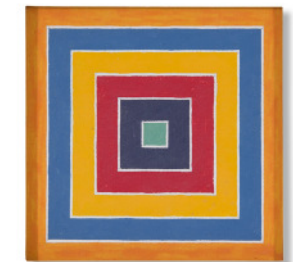
249

RICHARD PETTIBONE (B. 1938)

Frank Stella, 'Concentric Square'

signed and dated 'R Pettibone 72' (on the stretcher)
acrylic and silkscreen ink on canvas
3 x 3 in. (7.6 x 7.6 cm.)
Painted in 1972.

\$25,000-35,000



247

ANDY WARHOL (1928-1987)

Reagan Budget (Positive)

stamped with the Andy Warhol Foundation for the Visual Arts, Inc., the Estate of Andy Warhol and the Andy Warhol Art Authentication Board Inc. stamps and numbered 'PA.10.400' and A111.103' (on the overlap)
acrylic and silkscreen ink on canvas
20 x 16 in. (50.8 x 40.6 cm.)
Painted circa 1985-1986.

\$50,000-70,000

PROPERTY FROM AN IMPORTANT PRIVATE COLLECTION

250

RICHARD PETTIBONE (B. 1938)

Andy Warhol, 'Mao'

signed and dated 'R Pettibone 1975' (on the overlap)
acrylic and silkscreen ink on canvas
4 x 4 in. (10.2 x 10.2 cm.)
Painted in 1975.

\$25,000-35,000





PROPERTY FROM AN IMPORTANT PRIVATE COLLECTION

251

RICHARD PETTIBONE (B. 1938)

Andy Warhol, 'Saturday Disaster,' 1964

signed, titled and dated 'Warhol Saturday Disaster 1964 R Pettibone 1970' (on the stretcher)
acrylic and silkscreen ink on canvas, in artist's frame
4¼ x 5½ in. (10.8 x 13 cm.)
Painted in 1964.

\$20,000-30,000



PROPERTY FROM A NEW YORK CHARITABLE FAMILY TRUST

°252

RICHARD PETTIBONE (B. 1939)

Marcel Duchamp, 'Bicycle Wheel,' 1913-14

painted wood stool, bicycle wheel rim and forks
53 x 27 x 13.50 in. (134.62 x 68.6 x 34.29 cm.)
Executed in 1994.

\$40,000-60,000



PROPERTY FROM AN IMPORTANT PRIVATE COLLECTION

253

DENNIS HOPPER (1936-2010)

Double Standard

gelatin silver print
30 x 44 in. (76.2 x 111.8 cm.)
Photographed in 1961.

\$30,000-50,000

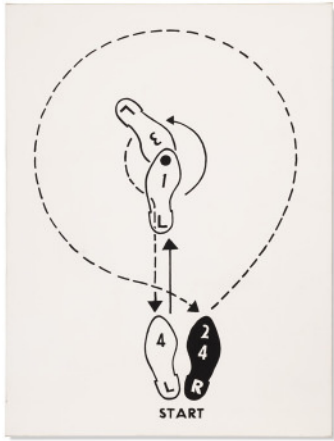
THE COLLECTION OF
THOMAS AND DORIS AMMANN

DAY SALE | SESSION II

Friday 13 May 2022 | 1.30PM (Lots 301-366)

Scan to view
full auction online





301

MIKE BIDLO (B. 1953)

Not Warhol (Fox Trot, 1962)

signed twice, titled and dated 'Mike Bidlo 84 Bidlo Not Andy Warhol's Fox Trot' (on the reverse)
 acrylic on canvas
 71¼ x 54 in. (182.2 x 137.2 cm.)
 Painted in 1984.

\$40,000-60,000

302

MARCEL DUCHAMP (1887-1968)

*Coeurs Volants (Fluttering Hearts) and
 Announcement for the Exhibition 'Doors'*
 [Two Works]

(i)
Coeurs Volants (Fluttering Hearts)
 signed, dated and numbered '11/24 Marcel Duchamp 1968' in pencil
 screenprint in colors, on wove paper
 23¾ x 17¾ in. (60.1 x 44.9 cm.)
 Executed in 1968. This work is number eleven from an edition of
 twenty-four, published by Something Else Press, New York.

(ii)
Announcement for the Exhibition 'Doors'
 signed and numbered 'Marcel Duchamp 21/50' in ink
 cutout in acetate
 image: 8¼ x 5½ in. (21 x 13 cm.)
 sheet: 10¾ x 7¾ in. (28 x 19.5 cm.)
 Executed in 1968. This work is number twenty-one
 from an edition of fifty.

\$5,000-7,000

303

ANDY WARHOL (1928-1987)

Flowers

signed, signed again with the artist's initials, inscribed and dated
 'to VICTORIA AW 73 Andy Warhol 1965' (on the overlap)
 acrylic, silkscreen ink and graphite on linen
 8 x 8 in. (20.3 x 20.3 cm.)
 Executed in 1965.

\$250,000-350,000

304

ANDY WARHOL (1928-1987)

Electric Chairs

signed, dated and stamp-numbered 'Andy Warhol 71 040/250'
 (on the reverse of each sheet)
 screenprint in colors on paper, in ten parts
 each sheet: 35¼ x 47¾ in. (89.5 x 121.2 cm.)
 Executed in 1971. This set is number 40 from an edition of 250.

\$200,000-300,000



305

STURTEVANT (1926-2014)

Warhol Gold Marilyn

signed, titled and dated "'Warhol Gold Marilyn"
 Sturtevant '73' (on the reverse)
 acrylic and silkscreen ink on canvas
 diameter: 17¾ in. (45.1 cm.)
 Painted in 1973.

\$150,000-250,000



306

ROSALYN DREXLER (B. 1926)

Zoo Bandit Killed

signed 'R. Drexler' (lower right); signed again, titled and dated
 'Rosalyn Drexler ZOO BANDIT KILLED 1963' (on the reverse)
 acrylic and paper collage on canvasboard
 10 x 14 in. (25.4 x 35.5 cm.)
 Executed in 1963.

\$20,000-30,000





307

JANET COOLING (1951-2022)

Loves Room

signed, titled and dated 'Loves Room Janet Cooling 1978' (lower edge)
 pastel, colored pencil, acrylic and graphite on paper
 20½ x 30 in. (52.1 x 76.2 cm.)
 Executed in 1978.

\$3,000-5,000



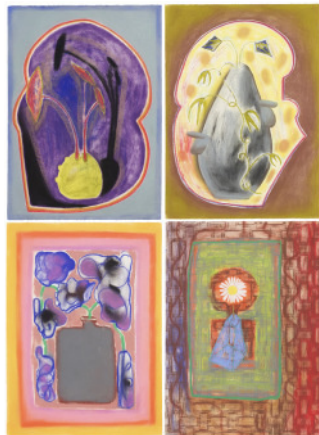
308

TOM WESSELMANN (1931-2004)

Study for Great American Nude #95

signed and dated 'Wesselmann 76' (lower center); dated again '76'
 (lower right); titled and dated again 'STUDY FOR GREAT AMERICAN
 NUDE #95 1976' (on the reverse)
 colored pencil and graphite on vellum
 8½ x 11 in. (21.5 x 28 cm.)
 Drawn in 1976.

\$25,000-35,000



309

FRANCESCO CLEMENTE (B. 1952)

*Chinese Window; Season; True Flower;
 The Colour of Wisdom [Four Works]*

signed, titled respectively and dated 'francesco clemente 1988'
 (on the reverse of each sheet)
 pastel on paper
 each: 26¼ x 19 in. (66.7 x 48.3 cm.)
 Drawn in 1988.

\$15,000-20,000

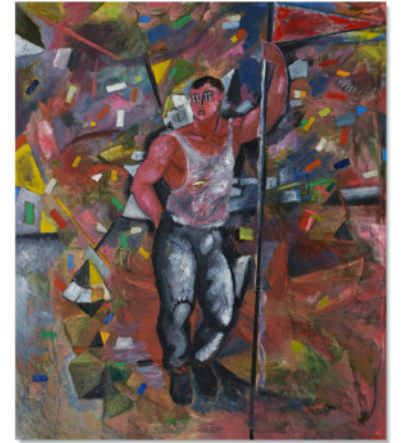
310

SANDRO CHIA (B. 1946)

Courageous Boy with Flag

signed 'Chia' (lower right)
 oil and fabric on canvas
 92½ x 78 in. (234 x 198.1 cm.)
 Executed in 1982.

\$50,000-70,000



311

FRANCESCO CLEMENTE (B. 1952)

Self-Portrait

signed and dated '1980 Francesco Clemente' (on the reverse)
 oil on canvas
 15¾ x 17¾ in. (40 x 45.1 cm.)
 Painted in 1980.

\$40,000-60,000



312

SANDRO CHIA (B. 1946)

Il Comico

oil on burlap
 63¼ x 31½ in. (160.7 x 80 cm.)
 Painted in 1978.

\$10,000-15,000





313

MICHAEL MOGAVERO (B. 1950)

Face It

signed, titled and dated "'Face It" M. Mogavero 1980' (on the overlap)
acrylic on canvas
72 x 60 in. (183 x 152.5 cm.)
Painted in 1980.

\$3,000-5,000



314

FRANCESCO CLEMENTE (B. 1952)

Self-Portrait

signed and dated '1980 Francesco Clemente' (on the reverse)
oil on canvas
11¼ x 7¾ in. (29.8 x 20 cm.)
Painted in 1980.

\$10,000-15,000



315

PHILIP TAAFFE (B. 1955)

Untitled Composition

signed and dated 'P. Taaffe 1984-85' (on the reverse)
oil, acrylic and linoprint collage on canvas
87¾ x 68½ in. (223 x 173.4 cm.)
Executed in 1984-1985.

\$30,000-50,000

316

FRANCESCO CLEMENTE (B. 1952)

Self-Portrait

oil and gold bronze on canvas
21¾ x 17¼ in. (54.9 x 45.1 cm.)
Painted in 1980.

\$20,000-30,000



317

MILO REICE (B. 1952)

Big Bang (Pandora)

signed, titled, inscribed and dated "'BIG BANG" (PANDORA)
Mythological 1. Milo Reice 1985' (on the stretcher)
oil on canvas
83¾ x 84½ in. (212.4 x 214.6 cm.)
Painted in 1985.

\$2,000-3,000



318

CY TWOMBLY (1928-2011)

Painting Detail (Roses)

signed with the artist's initials and numbered 'CT 5/6' (lower edge)
color dry-print on paper
image: 10¼ x 9¾ in. (26 x 25.1 cm.)
sheet: 16¾ x 10¾ in. (42.9 x 27.6 cm.)
Executed in 2009. This work is number five from an edition of six.

\$10,000-15,000





319

CY TWOMBLY (1928-2011)

Painting Detail (Roses)

signed with the artist's initials and numbered 'CT 5/6' (lower edge)
color dry-print on paper
image: 10¼ x 9⅞ in. (26 x 25.1 cm.)
sheet: 16⅞ x 10⅞ in. (42.9 x 27.6 cm.)
Executed in 2009. This work is number five from an edition of six.

\$10,000-15,000



320

CY TWOMBLY (1928-2011)

Painting Detail (Roses)

signed with the artist's initials and numbered 'CT 5/6' (lower edge)
color dry-print on paper
image: 10¼ x 9⅞ in. (26 x 25.1 cm.)
sheet: 16⅞ x 10⅞ in. (42.9 x 27.6 cm.)
Executed in 2009. This work is number five from an edition of six.

\$10,000-15,000



321

BRICE MARDEN (B. 1938)

First Square

signed, titled, inscribed and dated '2011 #1 First Square
Brice Marden' (on the reverse)
oil and graphite on marble
15¾ x 9⅞ in. (40 x 25.1 cm.)
Executed in 2011.

\$300,000-500,000

322

CARL ANDRE (B. 1935)

Structure White Consciousness

signed, signed again with the artist's monogram and dated
'ca carl andre 1965' (on a paper label affixed to the reverse)
printed paper collage on board mounted on Masonite
5 x 22 in. (12.7 x 55.8 cm.)
Executed in 1965.

\$40,000-60,000



323

BRICE MARDEN (B. 1938)

Souvenir de Grece 13

signed, titled and dated 'S. d G 13 B. Marden 74/96' (lower center)
graphite, beeswax and collage on paper
29½ x 22¼ in. (74.9 x 56.5 cm.)
Executed in 1974-1996.

\$200,000-300,000



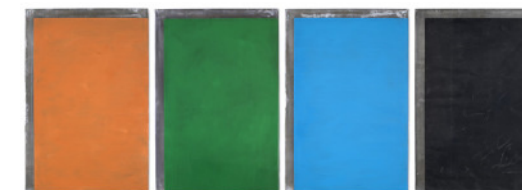
324

GÜNTHER FÖRG (1952-2013)

Untitled

signed, inscribed and dated '55/87 Förg 87'
(on the reverse of each panel)
acrylic on lead on wood, in four parts
each: 23¾ x 16 in. (60.3 x 40.6 cm.)
Executed in 1987.

\$150,000-200,000





325

ALESSANDRO TWOMBLY (B. 1959)

Iris Aurantica

signed and dated 'Alessandro Twombly 1989' (on the reverse)
 oil on canvas
 62 7/8 x 55 in. (160 x 140 cm.)
 Painted in 1989.

\$2,000-3,000



326

MARTIN KIPPENBERGER (1953-1997)

*Untitled (The Sovereign); Untitled (The Sovereign);
 Untitled (Hotel Mencey); Untitled (The Sovereign);
 Untitled (The Sovereign); Untitled (Hotel Mencey);
 Untitled (Hotel Chelsea); Untitled (Hotel Chelsea)*
 [Eight Works]

signed with the artist's initials and dated (lower edge of each sheet)
 colored pencil, graphite, felt-tip pen, white-out, oil crayon and Letraset
 on hotel stationery
 dimensions variable
 largest: 11 5/8 x 8 1/4 in. (29.5 x 21 cm.)
 smallest: 11 x 8 1/2 in. (27.9 x 21.6 cm.)
 Executed in 1989-1990.

\$90,000-120,000



327

FRANZ WEST (1947-2012)

Passstück (Aligner)

plaster, plastic, papier-mâché and lacquer
 8 1/2 x 31 1/4 x 10 1/2 in. (21.5 x 79.3 x 26.6 cm.)
 Executed in 1983.

\$20,000-30,000

328

MARTIN KIPPENBERGER (1953-1997)

Casa Magnetica

oil and graphite on canvas
 39 3/8 x 47 1/4 in. (100 x 120 cm.)
 Executed in 1983.

\$250,000-350,000



329

MARTIN KIPPENBERGER (1953-1997)

*New York von der Bronx aus gesehen [New York
 Seen from the Bronx]*

incised with the artist's initial, number and date 'K 851/3'
 (on the underside of bronze element)
 bronze on artist's wood base
 overall: 63 3/8 x 9 3/4 x 9 3/4 in. (161.6 x 24.8 x 24.8 cm.)
 bronze: 5 1/8 x 5 1/8 x 5 1/8 in. (14.3 x 13 x 13 cm.)
 Executed in 1985. This work is number one from an edition of three.

\$60,000-80,000



330

RAINER FETTING (B. 1949)

Rotes Mauerbild [Red Wall Picture]

dispersion on canvas
 78 3/4 x 67 in. (200 x 170 cm.)
 Executed in 1979.

\$40,000-60,000





331
**MARTIN KIPPENBERGER (1953-1997) &
 ALBERT OEHLLEN (B. 1954)**

Untitled (Den Müttern nur die Hälfte) and
Untitled (Desastres de la Democracia)
 [Two Works]

(i)
Untitled (Den Müttern nur die Hälfte)
 signed, titled and dated 'Den Müttern nur die Hälfte!
 Kippenberger 83 Oehlen' (lower center)
 acrylic, ink, printed paper and paper collage on paper
 11¾ x 9 in. (29.8 x 22.9 cm.)
 Executed in 1983.

(ii)
Untitled (Desastres de la Democracia)
 signed and dated twice 'K 84 A. Oehlen 84' (lower right)
 acrylic, ink, tape, printed paper and paper collage on paper
 11½ x 8½ in. (28.3 x 20.6 cm.)
 Executed in 1984.

\$10,000-15,000

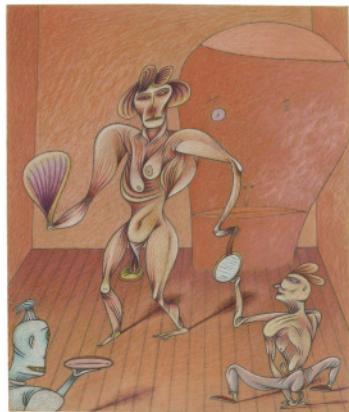


332
LLYN FOULKES (B. 1934)

You've Got to Show Me How to Do It

signed and dated 'Llyn Foulkes 1979' (on the reverse)
 oil, paper collage, photograph and staples on woodblock,
 in artist's frame
 7¼ x 6¼ (18.3 x 15.8 cm.)
 Executed in 1979.

\$5,000-7,000



333
JIM NUTT (B. 1938)

Quick Twittle Twittle

signed, titled and dated 'By Jim Nutt © '78 "Quick (twittle, twittle) [sic]"
 (on the reverse)
 colored pencil on paper
 10¾ x 9½ in. (27.3 x 23.2 cm.)
 Drawn in 1978.

\$20,000-30,000

334

WALLACE BERMAN (1926-1976)

Untitled (Dark Figure); *Untitled (Businessman at
 Desk)*; *Untitled (National Debt)*; *Untitled (Visual Aid
 Instruction)* [Four Works]

(i)
Untitled (Dark Figure)
 verifax collage on paperboard
 (positive image), in artist's frame
 6 ½ x 3 ¾ in. (15.6 x 9.5 cm.)
 Executed circa 1964-1976.

(ii)
Untitled (Businessman at Desk)
 verifax collage on paperboard, in
 artist's frame
 7 x 5 ½ in. (17.8 x 14.2 cm.)
 Executed circa 1964-1976.

\$12,000-18,000

(iii)
Untitled (National Debt)
 signed and dated 'Berman 1964'
 (on the reverse)
 verifax collage, bookpage and
 Letraset, in artist's frame
 13 ¾ x 12 ¾ in. (35 x 32.4 cm.)
 Executed in 1964.

(iv)
Untitled (Visual Aid Instruction)
 verifax collage on paperboard, in
 artist's frame
 3 ¾ x 7 ½ in. (9.8 x 18.7 cm.)
 Executed circa 1964-1976.



335

TIM ROLLINS AND K.O.S. (1955-2017)

The Journal of the Plague Year

signed, titled, inscribed and dated 'The Journal of the Plague Year
 TR + K.O.S. South Bronx 1988' (on the reverse)
 blood and graphite on book pages mounted on linen
 66 x 54 in. (167.6 x 137.2 cm.)
 Executed in 1988.

\$20,000-30,000



336

ANDREW MASULLO (B. 1957)

1765.; 1797.; 1856.; 1941. [Four Works]

(i)
 1765.
 signed, titled and dated '1765.
 Masullo. 88.' (on the stretcher)
 oil on found painting, in artist's
 frame
 14¾ x 11½ in. (36.5 x 28.3 cm.)
 Executed in 1988.

(ii)
 1797.
 paper collage on photograph
 9½ x 6¾ in. (23.2 x 17.1 cm.)
 Executed in 1988.

\$10,000-15,000

(iii)
 1856.
 ermine fur on photograph
 6¾ x 8¾ in. (16.2 x 21.3 cm.)
 Executed in 1988.

(iv)
 1941.
 watercolor on cut printed paper
 6¾ x 5½ in. (17.6 x 14.4 cm.)
 Executed in 1989.





337

MIKE AND DOUG STARN (B. 1961)

Rose

toned silver print collage, scotch tape and nails mounted on artists' wood frame
 65½ x 88¾ in. (165.4 x 225.1 cm.)
 Executed in 1982-88.

\$10,000-15,000



338

TIM ROLLINS AND K.O.S. (1955-2017)

Study for Amerika VII (After Franz Kafka)

signed, titled, inscribed and dated 'Study for Amerika VII TR + K.O.S. South Bronx 1987' (on the reverse)
 gold and silver watercolor on bookpages mounted on linen
 24 x 42 in. (61 x 106.7 cm.)
 Executed in 1987.

\$15,000-20,000



339

TOM OF FINLAND (1920-1991)

Untitled [Twelve Works]

signed and dated 'Tom-78' (lower edge of sheets i-viii, xi);
 signed 'Tom' (lower right of sheets ix-x)
 graphite on paper
 dimensions variable
 largest: 15 x 20½ in. (38.1 x 51.1 cm.)
 smallest: 11¾ x 8¼ in. (29.8 x 21 cm.)
 Drawn in 1967 (sheets ix-x) and 1978 (sheets i-viii, xi-xii).

\$80,000-120,000

340

BRYAN HUNT (B. 1947)

Teng

spruce and balsa wood, silk paper, copper leaf, black lacquer, steel rod
 65 x 9 x 7 in. (165.1 x 22.9 x 17.8 cm.)
 Executed in 1979.

\$10,000-15,000



341

MARK INNERST (B. 1957)

Distant View

signed and dated 'MARK INNERST 1988' (on the reverse)
 oil and acrylic on panel, in artist's frame
 22¾ x 15 in. (57.8 x 38.1 cm.)
 Painted in 1988.

\$3,000-5,000



342

GEORGE CONDO (B. 1957)

Human Landscape and Thought Trap [Two Works]

signed and dated 'Condo 83-12' (lower left of each sheet);
 signed again, titled respectively and dated again 'Condo 83-12'
 (on the reverse of each sheet)
 oil on paper
 each: 22 x 16½ in. (55.9 x 41.9 cm.)
 Painted in 1983.

\$20,000-30,000





343

ROSS BLECKNER (B. 1949)

Poverty Bouquet

signed, titled and dated 'POVERTY BOUQUET Ross Bleckner 1986'
(on the reverse)
oil on linen
48 x 40 in. (121.6 x 101.6 cm.)
Painted in 1986.

\$12,000-18,000

346

ERIC FISCHL (B. 1948)

Untitled (Study for Saigon Minnesota)

signed and dated 'Fischl '86' (lower left)
oil on paper
16 x 12 in. (40.6 x 30.5 cm.)
Painted in 1986.

\$20,000-30,000



344

BARRY FLANAGAN (1941-2009)

Opera Dog

incised with the artist's monogram and number 'bf 4/7'
(on the front proper left foot)
bronze
31¼ x 11 x 34¾ in. (78.3 x 28 x 87 cm.)
Conceived in 1981 and cast in 1991. This work is number four
from an edition of seven plus one artist's proof.

\$30,000-50,000

347

ROBERT THERRIEN (1947-2019)

No title (black hat)

stamped with the artist's initials and date 'RT 85'
(on the underside of the base)
bronze, enamel, wood
49¼ x 12½ x 5½ in. (125.1 x 31.8 x 14 cm.)
Executed in 1985. This work is unique.

\$20,000-30,000



345

DONALD BAECHLER (1956-2022)

Animal Farm 2

signed with the artist's initials and dated 'DB91' (lower left);
inscribed '2' (lower right)
gesso, gouache and coffee on paper
52¾ x 40¼ in. (134.3 x 102.2 cm.)
Executed in 1991.

\$10,000-15,000

348

ALEX KATZ (B. 1927)

Night 2

signed 'Alex Katz' (on the overlap)
oil on linen
138 x 48¼ in. (350.5 x 122.6 cm.)
Painted in 1987.

\$200,000-300,000





349

MARK TANSEY (B. 1949)

Iconoclast (Study for Triumph Over Mastery II)

signed, titled and dated 'Tansey 1987 "Iconoclast" (Study Towards Triumph Over Mastery)' (on the reverse)
 oil on canvas
 14 x 11 ¼ in. (35.5 x 28.5 cm.)
 Painted in 1987.

\$150,000-200,000



350

JENNIFER BARTLETT (B. 1941)

Tidal Wave II

titled 'TIDAL WAVE II' (on the reverse of each stretcher)
 oil and graphite on canvas, in two parts, with enamel silkscreen on baked enamel steel plate, in forty-four parts
 overall: 103 x 144 in. (261.6 x 365.8 cm.)
 each canvas: 48¼ x 48¼ in. (122.6 x 122.6 cm.)
 each plate: 12 x 12 in. (30.5 x 30.5 cm.)
 Executed in 1978.

\$15,000-20,000



351

THOMAS NOZKOWSKI (1944-2019)

Untitled (6-58)

signed twice, titled, inscribed and dated 'Thomas Nozkowski THOMAS NOZKOWSKI 70 HESTER ST NYC NY 10002 UNTITLED 6-58 1988' (on the reverse and the backing board)
 oil on canvasboard
 16 x 20 in. (40.6 x 50.8 cm.)
 Painted in 1988.

\$5,000-7,000

352

ROBERT WILSON (B. 1941)

'Hamletmachine' Table and Four Chairs

perforated and sheet steel
 installation dimensions variable
 table: 29 x 144 x 12 in. (73.5 x 366 x 30.5 cm.)
 each chair: 38 x 9¼ x 18½ in. (96.5 x 23.5 x 47 cm.)
 Executed in 1986.

\$20,000-30,000



353

SALOMÉ (B. 1954)

Brief Brecht

acrylic on canvas
 67 x 51¼ in. (170 x 130 cm.)
 Painted in 1979.

\$10,000-15,000



354

CHRISTOPHER BROWN (B. 1951)

Night of Ice

inscribed '88' (lower right); signed, titled and dated 'NIGHT OF ICE Christopher Brown 1992' (on the reverse)
 oil on linen
 88 x 88 in. (223.5 x 223.5 cm.)
 Painted in 1992.

\$2,000-3,000





355

JONATHAN BOROFSKY (B. 1942)

*Silhouette Cut-Out With Holes Drilled At...
2,659,320*

titled '2659320' (lower right of figure)
shaped Masonite, in two parts
overall: 70 x 44 in. (177.8 x 111.8 cm.)
figure: 70 x 24 in. (177.8 x 61 cm.)
briefcase: 17 x 18 in. (43.2 x 45.7 cm.)
Executed in 1979.

\$10,000-15,000



356

GEORG HEROLD (B. 1947)

F-2

signed and dated 'Herold 88' (on the reverse)
copper electroplated on canvas
16½ x 11½ in. (41 x 30.2 cm.)
Executed in 1988.

\$2,000-3,000



357

LOIS LANE (B. 1948)

Untitled

signed and dated 'Lane 82' (on the stretcher)
oil on canvas
96 x 72 in. (243.8 x 182.9 cm.)
Painted in 1982.

\$3,000-5,000

358

JIRÍ GEORG DOKOUPIL (B. 1954)

Sun Flower Field with Two Sticking Out Sun Flowers

candle soot on canvas
45½ x 57½ in. (115.9 x 145.7 cm.)
Executed in 1989.

\$6,000-8,000



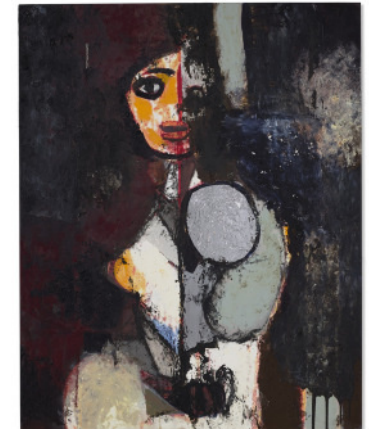
359

ENOC PEREZ (B. 1967)

Untitled (Bather)

signed, titled and dated 'July 2013 Enoc Perez Untitled (Bather)'
(on the reverse)
oil, acrylic, silver leaf and inkjet on canvas
60 x 47½ in. (152.4 x 121.6 cm.)
Executed in 2013.

\$8,000-12,000



360

WERNER BÜTTNER (B. 1954)

Artefakt in Pudelform

signed and dated 'Büttner 04' (lower right)
oil on canvas
74½ x 74½ in. (189.2 x 189.2 cm.)
Painted in 2004.

\$20,000-30,000





361

URS FISCHER (B. 1973)

Romance / Appetite

signed 'Urs Fischer' (on a paper label affixed to the reverse of the right element)
 paper laminated MDF, primer, gesso, screen printing ink, milled polyurethane frame and resin-based paint, in two parts
 each: 38½ x 29½ x 1½ in. (97.8 x 74.8 x 2.8 cm.)
 Executed in 2018. This work is number one from an edition of two plus two artist's proofs.

\$80,000-120,000

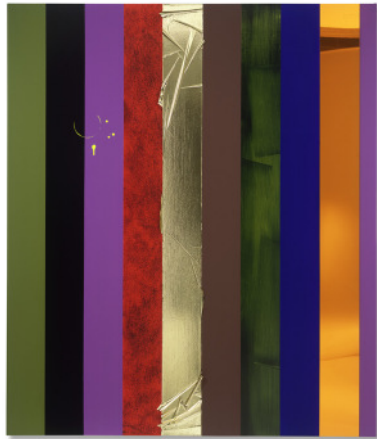
364

GAVIN TURK (B. 1967)

Transit V Cobra Disaster Green

signed, titled and dated "Transit V Cobra Disaster Green
 Gavin Turk 2011" (on the reverse)
 acrylic and silkscreen ink on canvas
 70¼ x 57½ in. (178.3 x 145.1 cm.)
 Painted in 2011.

\$25,000-35,000



362

ANSELM REYLE (B. 1970)

Untitled

orange Plexiglas, gold foil and acrylic on canvas
 88¼ x 74½ in. (224.2 x 189.2 cm.)
 Executed in 2005.

\$20,000-30,000

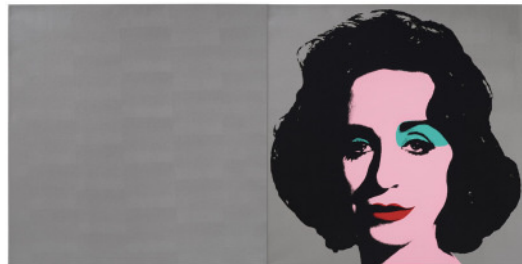
365

SEAN LANDERS (B. 1962)

Truman Capote

signed, titled and dated "TRUMAN CAPOTE"
 © 1999 SEAN LANDERS' (lower right)
 oil on linen
 47 x 39 in. (119.4 x 99 cm.)
 Painted in 1999.

\$20,000-30,000



363

DEBORAH KASS (B. 1952)

Silver Deb

signed 'D. KASS' (on the reverse of the left canvas);
 signed again, titled and dated 'SILVER DEB D. KASS 2000'
 (on the reverse of the right canvas)
 diptych—acrylic and silkscreen ink on canvas
 40 x 80 in. (101.6 x 203 cm.)
 Painted in 2000.

\$30,000-50,000

366

KLAUDIA SCHIFFERLE (B. 1955)

Untitled

signed, numbered consecutively and dated 'Schifferle 2011'
 (on the reverse of each canvas)
 acrylic varnish on canvas, in eighteen parts
 overall: 59½ x 95½ in. (151.1 x 242.5 cm.)
 each: 19½ x 15½ in. (49.5 x 39.4 cm.)
 Painted in 2011.

\$10,000-15,000





**POST-WAR AND
CONTEMPORARY ART
DAY SALE SESSION III**

Friday 13 May 2022
3.30 pm (Lots 401-531)

Scan to view
full auction online





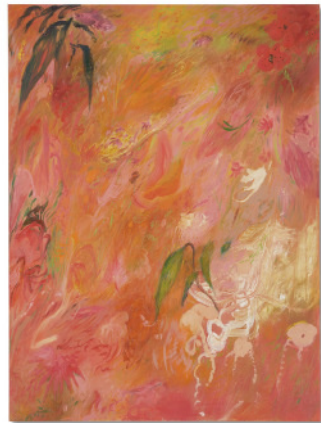
401

LEELEE KIMMEL (B. 1983)

No. 8

oilstick and acrylic on canvas
72 x 120 in. (182.9 x 304.8 cm.)
Executed in 2022.

\$60,000-80,000



402

SOUMYA NETRABILE (B. 1966)

Song in Pink and Orange

signed, titled and dated 'SONG IN PINK + ORANGE 2022
SOUMYA NETRABILE' (on the reverse)
oil on canvas
40 x 30 in. (101.6 x 76.2 cm.)
Painted in 2022.

\$10,000-15,000



403

ALEX EAGLETON (B. 1979)

Candle as a portrait : ciao

signed twice, inscribed and dated 'IN THE CARDS A EAGLETON
Alex Eagleton 2022' (on the reverse)
oil, alcohol ink and flocking on canvas
78 x 45 in. (198.1 x 114.3 cm.)
Executed in 2022.

\$18,000-25,000

404

KARYN LYONS (B. 1981)

The Pajama Party

signed twice, titled and dated, 'Karyn Lyons KARYN LYONS 2022
THE PAJAMA PARTY' (on the reverse)
oil on canvas
20.5 x 17 in. (52.1 x 42.6 cm.)
Painted in 2022.

\$15,000-20,000



405

STEVIE DIX (B. 1990)

Grief

oil on canvas, in artist's frame
19¾ x 23½ in. (50.2 x 59.7 cm.)
Painted in 2022.

\$8,000-12,000



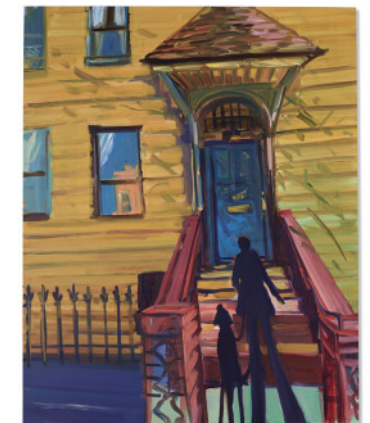
406

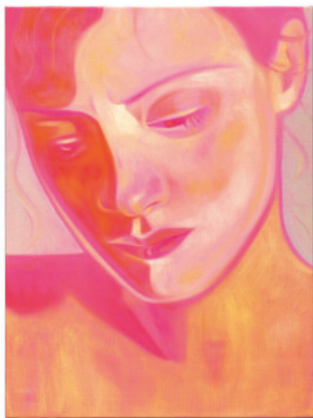
DEBORAH BROWN (B. 1955)

Blue Door

signed, titled and dated 'Deborah Brown 2022 "Blue Door"
(on the overlap)
oil on canvas
60 x 48 in. (152.4 x 121.9 cm.)
Painted in 2022.

\$15,000-20,000





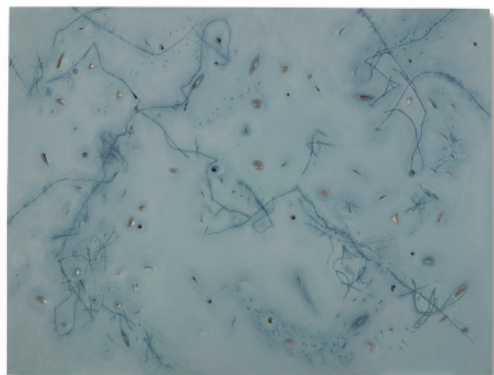
407

INÈS LONGEVIAL (B. 1990)

Olive Oil on Dragon Fruit

oil on canvas
23.6 x 17.7 in. (59.9 x 45 cm.)
Painted in 2022.

\$10,000-15,000



408

ABBY LEIGH (B. 1948)

Everyone was Migrating Somewhere

oil on Dibond that has been scraped, sanded, axed and sledgehammered
50 x 66 in. (127 x 167.6 cm.)
Executed in 2020.

\$15,000-20,000



409

B. THOM STEVENSON (B. 1985)

Total Insanity

signed, titled and dated 'B. THOM STEVENSON
TOTAL INSANITY 2022' (on the overlap)
acrylic and enamel on canvas
40 x 50 in. (101.6 x 127 cm.)
Painted in 2022.

\$8,000-12,000

410

KYLE ORLANDO (B. 1989)

Street Heat Skipping Summers Feet

signed twice, inscribed and dated, 'LOST IN THE FLOOD -22 ice ICE
BABY KYLE ORLANDO KYLE ORLANDO' (on the reverse)
acrylic and spray paint on canvas, in artist's frame
31 x 41 in. (78.7 x 104.1 cm.)
Painted in 2022.

\$4,000-6,000



411

OLIVER CLEGG (B. 1980)

they said a lot of funny things to me

oil on canvas
64 x 48 in. (162.6 x 121.9 cm.)
Painted in 2022.

\$18,000-25,000



412

MIE OLISE KJÆRGAARD

On a hammerhead doing akroyoga with some birds

acrylic on canvas
59 x 51¼ in. (149.7 x 130.1 cm.)
Painted in 2022.

\$8,000-12,000





413

YVES SCHERER (B. 1987)

Meadow Lane

signed and dated 'Yves Scherer 21' (on the reverse)
oil on canvas
77 x 87 in. (195.6 x 221 cm.)
Painted in 2021.

\$20,000-30,000



414

COCO YOUNG (B. 1989)

Jour de Mistral

titled 'JOUR DE MISTRAL' (on the reverse)
oil on canvas
45 x 64 in. (114.3 x 162.7 cm.)
Painted in 2022.

\$10,000-15,000



415

DANIELLE ORCHARD (B. 1985)

Dock at Louisiana

signed and dated 'Danielle Orchard 2019' (on the overlap)
oil on canvas
76 x 101½ in. (193 x 257.8 cm.)
Painted in 2019.

\$40,000-60,000

PROPERTY FROM THE COLLECTION OF MYRON CALHOUN

416

TUNJI ADENIYI-JONES (B. 1992)

Patterns & Rituals XIX

signed with the artist's initials and dated 'TAJ 19' (on the reverse)
marker and graphite on paper
8¼ x 5 in. (21 x 12.7 cm.)
Executed in 2019.

\$4,000-6,000



PROPERTY FROM A NEW YORK CHARITABLE FAMILY TRUST

417

LISA YUSKAVAGE (B. 1962)

Still Life Wearing a Wig

signed and dated 'Lisa Yuskavage 1999' (lower left); signed again,
titled and dated again 'Lisa Yuskavage 1999 Still Life Wearing a Wig'
(on the reverse)
watercolor and graphite on paper
36½ x 46 in. (92.7 x 114.3 cm.)
Executed in 1999.

\$40,000-60,000



PROPERTY FROM THE COLLECTION OF MYRON CALHOUN

418

WANGECHI MUTU (B. 1972)

Untitled (Pin-Up no.2)

watercolor, graphite and printed paper collage on paper
14 x 10½ in. (35.6 x 25.7 cm.)
Executed in 2001.

\$8,000-12,000





HELPING CHILDREN HEAL: ARTWORK DONATED TO BENEFIT RXART

419

AUSTIN LEE (B. 1983)

Icarus

signed, inscribed, titled and dated 'For Rx Art A Lee 2022 "ICARUS"
(on the reverse)
acrylic on wood
16 x 20 in. (40.6 x 50.8 cm.)
Painted in 2022.

\$8,000-12,000



PROPERTY TO BENEFIT THE BRONX MUSEUM OF THE ARTS,
ON THE OCCASION OF ITS 50TH ANNIVERSARY

420

ANGEL OTERO (B. 1981)

Title to be Determined

oil paint and fabric collaged on canvas
72 x 96 in. (182.9 x 243.8 x 3.8 cm.)
Executed in 2022.

\$80,000-120,000



421

REBECCA NESS (B. 1992)

Lunch Break

signed twice, titled and dated "'LUNCH BREAK"
Rebecca Ness 2020 NESS' (on the reverse)
oil on canvas
8 x 9 in. (20.3 x 22.9 cm.)
Painted in 2020.

\$4,000-6,000

422

ANTHONY CUDAHY (B. 1989)

The Braiding

oil on canvas
72 x 60 in. (182.9 x 152.4 cm.)
Painted in 2019.

\$25,000-35,000



ARTISTS FOR HUMANITY: A TRIBUTE TO UKRAINE
BENEFITING DOCTORS WITHOUT BORDERS

423

YOSHITOMO NARA (B. 1959)

Lone Star

colored pencil on paper
15 x 10½ in. (38.1 x 26.7 cm.)
Executed in 2013.

\$100,000-150,000



ARTISTS FOR HUMANITY: A TRIBUTE TO UKRAINE
BENEFITING DOCTORS WITHOUT BORDERS

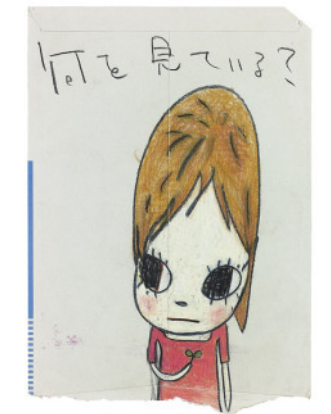
424

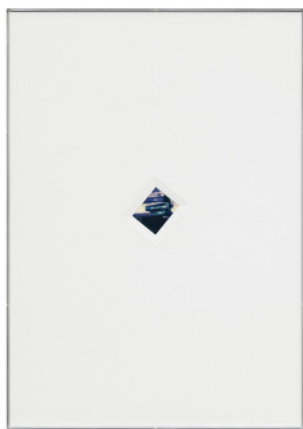
YOSHITOMO NARA (B. 1959)

Sprout in Hand

colored pencil on paper
13½ x 9½ in. (34.3 x 24.1 cm.)
Executed in 2013.

\$80,000-120,000





ARTISTS FOR HUMANITY: A TRIBUTE TO UKRAINE
BENEFITING DOCTORS WITHOUT BORDERS

425

CYPRIEN GAILLARD (B. 1980)

Green Vessel Study

polarid, mat, aluminum and Plexiglas frame
40.50 x 28.75 x 1.75 in. (102.87 x 73.03 x 4.45 cm.)

\$3,000-5,000

ARTISTS FOR HUMANITY: A TRIBUTE TO UKRAINE
BENEFITING DOCTORS WITHOUT BORDERS

428

JUERGEN TELLER (B. 1964)

If You Pay Attention No. 132, Iran

giclee print
16 x 20 in. (40.6 x 50.8 cm.)

Executed in 2019. This work is number one from an edition of five.

\$3,000-5,000



ARTISTS FOR HUMANITY: A TRIBUTE TO UKRAINE
BENEFITING DOCTORS WITHOUT BORDERS

426

ILYA KABAKOV (B. 1933)

The Half of the Painting #8

oil on canvas
11½ x 11½ x 1¼ in. (29.5 x 29.5 x 4.6 cm.)
Painted in 2021.

\$20,000-30,000

ARTISTS FOR HUMANITY: A TRIBUTE TO UKRAINE
BENEFITING DOCTORS WITHOUT BORDERS

429

LESIA KHOMENKO (B. 1980)

From "Lesia Khomenko and Her School" series

mixed media and acrylic on biflex
82¼ x 57 in. (209 x 145 cm.)
Executed in 2018.

\$5,000-10,000



ARTISTS FOR HUMANITY: A TRIBUTE TO UKRAINE
BENEFITING DOCTORS WITHOUT BORDERS

427

BORIS MIKHAILOV (B. 1938)

Untitled (from the "Yesterday's Sandwich" series)

chromogenic print from diafilm
11¼ x 15¼ in. (30 x 40 cm.)
Executed in 1971; printed circa 1990.

\$3,000-5,000

ARTISTS FOR HUMANITY: A TRIBUTE TO UKRAINE
BENEFITING DOCTORS WITHOUT BORDERS

430

NADIA KAABI-LINKE (B. 1978)

At Swim Two Hairs

watercolor on paper
32½ x 23 in. (82.6 x 58.4 cm.)
Painted in 2016.

\$3,000-5,000





ARTISTS FOR HUMANITY: A TRIBUTE TO UKRAINE
BENEFITING DOCTORS WITHOUT BORDERS

431

OLAFUR ELIASSON (B. 1967)

Self-reflective Compass

brass, paint, color-effect filter glass, magnets, motor and ballast
14½ x 8¾ x 14½ in. (36.8 x 22.1 x 36.8 cm.)
Executed in 2018.

\$15,000-20,000



ARTISTS FOR HUMANITY: A TRIBUTE TO UKRAINE
BENEFITING DOCTORS WITHOUT BORDERS

432

JOSE DÁVILA (B. 1974)

Untitled (Cold Shoulder) IV

archival pigment print
88½ x 61 x 3 in. (225 x 154.9 x 7.9 cm.)
Executed in 2019. This work is from an edition of four plus one
artist's proof.

\$20,000-30,000



ARTISTS FOR HUMANITY: A TRIBUTE TO UKRAINE
BENEFITING DOCTORS WITHOUT BORDERS

433

TOMOO GOKITA (B. 1969)

Yellow Magic Carnival

acrylic on canvas
76.4 x 51.3 in. (194.1 x 130.3 cm.)
Painted in 2021.

\$50,000-70,000

434

ADRIANA VAREJÃO (B. 1964)

Monocromo Roma I

signed, titled and dated 'Monocromo Roma I 2016 A. Varejão.'
(on the reverse)
oil and plaster on canvas
70¾ x 70¾ in. (180 x 180 cm.)
Executed in 2016.

\$350,000-550,000



435

REBECCA WARREN (B. 1965)

The Nude

hand-painted bronze
92½ x 13½ x 9½ in. (235 x 34.3 x 24.1 cm.)
Executed in 2014. This work is from an edition of three uniquely
painted works plus one artist's proof.

\$150,000-200,000



PROPERTY FROM AN IMPORTANT NEW YORK COLLECTION

436

ANGEL OTERO (B. 1981)

Untitled

signed and dated 'Angel Otero 2011' (on the reverse)
oil and oil paint skins on canvas
73½ x 87½ x 4 in. (186.7 x 222.3 x 10.2 cm.)
Executed in 2011.

\$50,000-70,000





PROPERTY FROM A PRIVATE AMERICAN COLLECTION

437

YAYOI KUSAMA (B. 1929)

Drifting Waves

signed and dated '1978 YAYOI KUSAMA' (lower left); signed again, titled in Japanese and dated again 'YAYOI KUSAMA 1978' (on the reverse)
spray enamel on paperboard
10¾ x 9½ in. (27.3 x 24.1 cm.)
Executed in 1978.

\$20,000-30,000



438

JENNY HOLZER (B. 1950)

Arno Pair

incised with the artist's initials and number 'JH1642 1/6 ELEMENT 1/2' (on the underside of the first element); incised again with the artist's initials and number 'JH1642 1/6 ELEMENT 2/2' (on the underside of the second element)
pair of curved Carrara White marble benches
each: 18 x 28 x 100 in. (45.7 x 71.1 x 254 cm.)
Executed in 2010. This work is number one from an edition of six plus one artist's proof.

\$400,000-600,000



439

SOL LEWITT (1928-2007)

Not Straight Brushstrokes in All Directions

signed and dated 'S Lewitt 93' (lower right)
gouache on paper
30 x 22 in. (76.2 x 55.9 cm.)
Painted in 1993.

\$30,000-50,000

440

SOL LEWITT (1928-2007)

Untitled (Cube/Corner)

signed and dated 'S Lewitt 1989' (lower right)
gouache on paper
29¾ x 22 in. (75.6 x 55.9 cm.)
Painted in 1989.

\$20,000-30,000



441

SOL LEWITT (1928-2007)

Horizontal Yellow Lines

signed, titled, inscribed and dated 'Horizontal Yellow Lines - Milan - July 9 1971 Sol LeWitt' (on the reverse)
ink on paper
14¼ x 14¼ in. (36.2 x 36.2 cm.)
Executed in 1971.

\$25,000-35,000



442

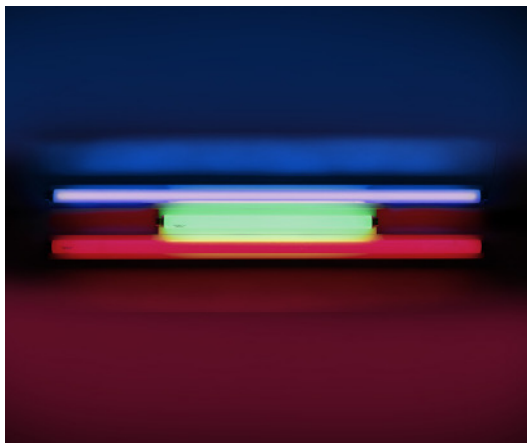
ENRICO CASTELLANI (1930-2017)

Superficie bianca

signed, titled and dated 'Castellani - superficie bianca - 2001' (on the overlap)
acrylic on shaped canvas
59 x 79 in. (149.9 x 200.7 cm.)
Painted in 2001.

\$400,000-600,000





443

DAN FLAVIN (1933-1996)

Untitled

ultraviolet, green and red fluorescent light
8 x 48 x 3 7/8 in. (20.3 x 121.9 x 9.9 cm.)
Executed in 1995. This work is number two from an edition of five, of which three were fabricated, and is accompanied by a certificate of authenticity signed by the artist.

\$120,000-180,000

446

ROBERT RYMAN (B. 1930)

Part 3

signed and dated 'Ryman 93' (left edge); signed and dated again 'Ryman 93' and titled 'Part 3' (on the reverse)
oil on corrugated conservation board with metal fasteners
18 x 18 in. (45.7 x 45.7 cm.)
Executed in 1993.

\$80,000-120,000



444

JOHN MCCRACKEN (1934-2011)

Slate

plywood, fiberglass and resin
4 1/2 x 36 x 5 1/2 in. (11.4 x 91.4 x 14 cm.)
Executed in 2005.

\$50,000-70,000



447

ANTONY GORMLEY (B. 1950)

SCAFFOLD VII

4mm square section stainless steel bar
76 1/8 x 14 1/4 x 18 3/8 in. (193.2 x 36.2 x 46.7 cm.)
Executed in 2016. This work is unique.

\$250,000-350,000

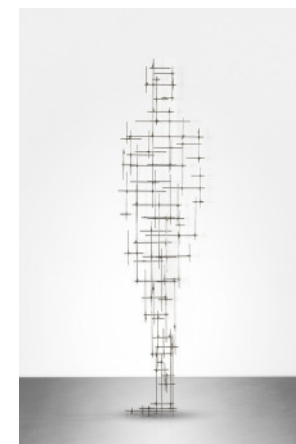


Photo: © Antony Gormley

445

RICHARD SERRA (B. 1938)

Untitled #55

paintstick on paper
39 3/4 x 40 in. (101 x 101.6 cm.)
Executed in 2001.

\$300,000-500,000



448

MARK GROTJAHN (B. 1968)

Untitled (Full Color Butterfly #720)

signed twice, titled and dated 'Untitled (full color Butterfly #720) 2006
Mark Grotjahn MARK GROT' (on the reverse)
colored pencil on paper
19 7/8 x 18 3/4 in. (50.5 x 47.6 cm.)
Executed in 2006.

\$120,000-180,000





449

RICHARD SERRA (B.1938)

Ramble 3-9

lithographic crayon on paper
21¾ x 29¾ in. (55.9 x 76.2 cm.)
Executed in 2015.

\$80,000-120,000

452

ROBERT LONGO (B. 1953)

Untitled (Black Blood)

signed and dated 'R Longo 08' (lower right)
charcoal on paper
57 x 48 in. (144.8 x 121.9 cm.)
Executed in 2008.

\$300,000-400,000



450

WADE GUYTON (B. 1972)

Untitled (Striped)

signed and dated 'Wade Guyton 2010' (on the overlap)
Epson UltraChrome inkjet on linen
84 x 69 in. (213.4 x 175.3 cm.)
Executed in 2010.

\$300,000-500,000

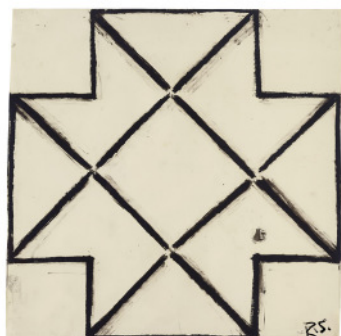
453

MARILYN MINTER (B. 1948)

Shit Kicker

signed 'M. Minter' (on a paper label affixed to the reverse)
chromogenic print
59½ x 85½ in. (151.1 x 217.2 cm.)
Executed in 2006. This work is number three from an edition of three plus two artist's proofs.

\$40,000-60,000



451

RICHARD SERRA (B.1938)

12 Plates in a Cross

signed with the artist's initials 'R.S.' (lower right)
paintstick on paper
59¾ x 60¾ in. (151.8 x 154.3 cm.)
Executed in 1973.

\$150,000-200,000

454

IRVING PENN (1917-2009)

Poppy: Burgundy (New York, 1968)

signed, titled, numbered and dated 'Irving Penn Poppy: Burgundy (New York, 1968) 20' and stamped photographer's/Conde Nast copyright credit (on the reverse)
pigment print, flush-mounted on board, printed September 2006
19¾ x 17 in. (50.5 x 43.2 cm.)
Photographed in 1968; printed in 2006. This work is from an edition of 20.

\$60,000-80,000





PROPERTY FROM A PROMINENT COLLECTION

455

ANDREAS GURSKY (B. 1955)

Stateville, Illinois

signed, titled, numbered and dated 'Stateville, Illinois 2002 Editionsnr. 1/6 Andreas Gursky' (on a paper label affixed to the reverse)
chromogenic print mounted on Plexiglas in artist's frame
81 x 120½ in. (206 x 307 cm.)
Executed in 2002. This work is number one from an edition of six.

\$200,000-300,000



PROPERTY FROM A NEW YORK CHARITABLE FAMILY TRUST

°456

WILLIAM KENTRIDGE (B. 1955)

Drawing from "Preparing the Flute" (Stage Setting)

signed twice 'KENTRIDGE' (lower left and lower right)
charcoal and pastel on collaged paper
31½ x 47¼ in. (80 x 120 cm.)
Executed in 2004-2005.

\$40,000-60,000



457

DAVID WOJNAROWICZ (1954-1992)

Sex Series (For Marion Scemama)

signed, titled, numbered and dated '2/12 SEX SERIES 1989/90 David Wojnarowicz' (on the reverse of each sheet)
eight vintage gelatin silver prints, in artist's frames
each sheet: 16 x 19 ½ (40.6 x 50.3 cm.)
each framed: 27 x 31 in. (68.6 x 78.7 cm.)
Executed in 1989-1990. This set is number two from an edition of twelve plus one artist's proof.

\$100,000-150,000

458

JENNY HOLZER (B. 1950)

Selection from Survival: When there is no safe place...

incised with the artist's signature and number 'Jenny Holzer JH486 13/20' (on the underside)
Verde antique marble footstool
17 x 29 x 16½ in. (43.2 x 73.7 x 41.9 cm.)
Executed in 1983-1985. This work is number thirteen from an edition of twenty.

\$40,000-60,000



459

RICHARD PRINCE (B. 1949)

Untitled (Girlfriend)

signed, inscribed and dated 'Richard Prince ap 1993' (on a paper label affixed to the reverse)
Ektacolor photograph
74½ x 50 in. (189.2 x 127 cm.)
Executed in 1993. This work is the artist's proof aside from an edition of two plus one artist's proof.

\$250,000-350,000



460

YOSHITOMO NARA (B. 1959)

Untitled

colored pencil on envelope
8 x 7½ in. (20.1 x 18.8 cm.)
Executed in 2003.

\$80,000-120,000





461

YOSHITOMO NARA (B. 1959)

Untitled

signed in Japanese and dated "97" (upper right); inscribed 'last kamikaze' (lower right)
pen and colored pencil on paper
9 x 6 in. (22.9 x 15.2 cm.)
Executed in 1997.

\$40,000-60,000



462

CHRISTOPHER WOOL (B. 1955)

Untitled

embossed with the artist's signature 'WOOL' (lower right)
alkyd on rice paper
74 x 37½ in. (188 x 95.3 cm.)
Painted in 1990.

\$80,000-120,000



463

DUANE HANSON (1925-1996)

Cowboy

denim, leather, metal and fabric on bronze polychromed in oil
72 x 24 x 18 in. (182.9 x 61 x 45.7 cm.)
Executed in 1984-1985. This work is number two from an edition of nine unique versions.

\$250,000-350,000

464

GEORGE CONDO (B. 1957)

Untitled

oil on canvas
43½ x 39½ in. (110.5 x 100.3 cm.)
Painted in 1985.

\$200,000-300,000



PROPERTY FROM A NEW YORK CHARITABLE FAMILY TRUST

°465

GEORGE CONDO (B. 1957)

Untitled

signed and dated 'Condo '84' (on the overlap)
oil on canvas
25¼ x 21¾ in. (65.4 x 54.3 cm.)
Painted in 1984.

\$50,000-70,000



PROPERTY FROM A NEW YORK CHARITABLE FAMILY TRUST

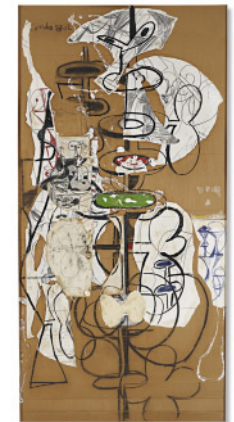
°466

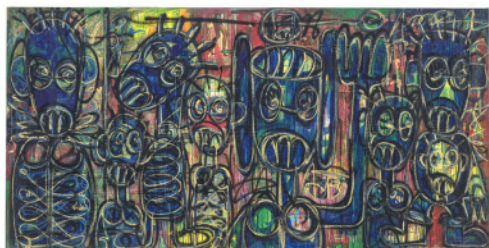
GEORGE CONDO (B. 1957)

Untitled

signed and dated 'Condo 87.12' (upper left)
oil, wax crayon, charcoal, graphite and paper collage on cardboard
96 x 48 in. (243.8 x 121.9 cm.)
Executed in 1987.

\$60,000-80,000





467

ABOUDIA (B.1983)

Nouchi Graffiti: Les Coquins et Leur Chien

signed 'ABOUDIA' (lower right)
acrylic, spray paint, paper collage and oil pastel on denim
59 x 118 in. (149.9 x 299.7 cm.)
Executed in 2021.

\$50,000-70,000

PROPERTY FROM A NEW YORK CHARITABLE FAMILY TRUST

°470

SECUNDINO HERNÁNDEZ (B. 1975)

Untitled

signed and dated 'Secundino Hernández 15' (on the reverse)
oil, acrylic, gouache and alkyd on canvas
112½ x 99 (285.8 x 251.5 cm.)
Painted in 2015.

\$60,000-80,000



°468

JOE BRADLEY (B. 1975)

Heads

signed and dated 'Joe Bradley 2011' (on the overlap)
oil on canvas
78¾ x 98½ in. (200 x 250 cm.)
Painted in 2011.

\$250,000-350,000

PROPERTY FROM A NEW YORK CHARITABLE FAMILY TRUST

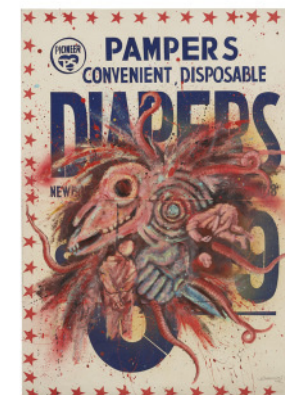
°471

DAVID WOJNAROWICZ (1954-1992)

Untitled (Pampers)

signed and dated 'WOJNAROWICZ '84 NYC' (lower right)
acrylic on found supermarket poster
44 x 32 in. (111.8 x 81.3 cm.)
Executed in 1984.

\$30,000-40,000



PROPERTY FROM A NEW YORK CHARITABLE FAMILY TRUST

°469

MARK BRADFORD (B. 1961)

Untitled (Shoe)

paper collage
30 x 31½ in. (76.2 x 80 cm.)
Executed in 2003.

\$100,000-150,000

472

LOUIS FRATINO (B.1993)

Portrait

signed and dated 'Louis Fratino 2016' (on the reverse)
wax crayon, marker and ink on paper
11¾ x 8¾ in. (29.5 x 21 cm.)
Executed in 2016.

\$15,000-20,000





473

DANA SCHUTZ (B. 1976)

Arrangement

signed and dated 'Dana Schutz 2010' (on the reverse)
oil on canvas
72 x 90 in. (182.9 x 228.6 cm.)
Painted in 2010.

\$300,000-500,000



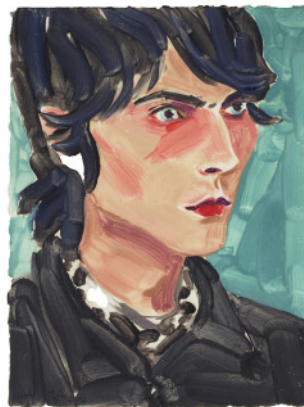
474

ALEX KATZ (B. 1927)

Woman in a Hat

incised with the artist's signature and date 'Alex Katz 03' (upper center)
oil on Masonite
16 x 11 7/8 in. (40.6 x 30.2 cm.)
Painted in 2003.

\$30,000-50,000



475

ELIZABETH PEYTON (B. 1965)

Nick (One)

signed and dated 'Elizabeth Peyton 2002' (lower left)
monotype on paper
12 x 9 in. (30.5 x 22.9 cm.)
Executed in 2002.

\$30,000-50,000

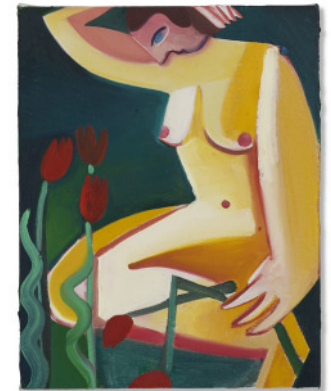
476

DANIELLE ORCHARD (B. 1985)

Untitled

acrylic on canvas
14 x 11 in. (35.5 x 27.9 cm.)
Painted in 2020.

\$8,000-12,000



477

NINA CHANEL ABNEY (B. 1982)

Untitled (Black Love)

signed and dated 'NINA CHANEL ABNEY 2016' (on the reverse)
acrylic, spray paint and paper collage on panel
24 x 18 in. (61 x 45.7 cm.)
Executed in 2016.

\$50,000-70,000



478

SHARA HUGHES (B. 1981)

Chill Pill

signed, titled and dated 'SHARA HUGHES "Chill Pill" 2016' (on the reverse)
oil, acrylic and dye on canvas
36 x 30 in. (91.4 x 76.2 cm.)
Executed in 2016.

\$100,000-150,000





479

GENIEVE FIGGIS (B.1972)

King & Queen

signed and dated 'genieve figgis 2015' (on the reverse)
acrylic on canvas
20 x 16 in. (50.8 x 40.6 cm.)
Painted in 2015.

\$30,000-50,000



°480

JOSH SMITH (B. 1978)

Untitled

signed and dated 'Josh Smith 2010' (on the overlap)
oil on canvas
60 x 48 in. (152.4 x 121.9 cm.)
Painted in 2010.

\$30,000-40,000



481

SALMAN TOOR (B. 1983)

Humiliated Ancestor #2

oil on panel
10 x 8 in. (25.4 x 20.3 cm.)
Painted in 2016.

\$30,000-50,000

482

TODD BIENVENU (B. 1980)

Crowd Surfing

oil on canvas
76 x 86 in. (193 x 218 cm.)
Painted in 2020.

\$15,000-20,000



483

KAWS (B.1974)

KAWSBOB (IT TOOK FIVE MINUTES), PACKAGE PAINTING SERIES

signed and dated 'KAWS „10' (on the reverse)
acrylic on canvas in blister package with printed card
18 x 15 x 3 in. (45.7 x 38.1 x 7.6 cm.)
Executed in 2010.

\$150,000-200,000



484

PETRA CORTRIGHT (B. 1986)

shape file specs RED

digital painting on aluminum
78½ x 59 in. (199.4 x 149.9 cm.)
Executed in 2013.

\$20,000-30,000





PROPERTY FROM A NEW YORK CHARITABLE FAMILY TRUST

°485

CHARLINE VON HEYL (B. 1960)

Check My Bucket

signed, inscribed and dated 'Check Your Bucket' Ch V Heyl 2001' (on the reverse)
oil on canvas

82 x 78 in. (208.3 x 198.1 cm.)
Painted in 2001.

\$80,000-120,000

488

MATTHEW BARNEY (B. 1967)

Cremaster 2: The Book of Mormon

signed and dated 'Matthew Barney 99' (on the reverse)
chromogenic print in self-lubricating frame
54 x 43 x 1 in. (137.2 x 109.2 x 2.5 cm.)
Executed in 1999. This work is number two from an edition of six.

\$10,000-15,000



PROPERTY FROM A PROMINENT COLLECTION

486

THEASTER GATES (B. 1973)

Roofing Exercise 3

wood, roofing paper and tar
72 x 48 x 4 in. (182.9 x 121.9 x 10.2 cm.)
Executed in 2012.

\$40,000-60,000

489

CINDY SHERMAN (B. 1954)

Untitled

chromogenic color print, in artist's frame
overall: 46 x 40 in. (116.8 x 101.6 cm.)
Executed in 1989. This work is number one from an edition of six.

\$80,000-120,000



487

MATTHEW BARNEY (B. 1967)

Cremaster 3: The Five Points of Fellowship

signed and dated 'Matthew Barney 2002' (on the reverse)
chromogenic print in self-lubricating frame
60 x 36 in. (152.4 x 91.4 cm.)
Executed in 2002. This work is number five from an edition of six plus one artist's proof.

\$10,000-15,000

490

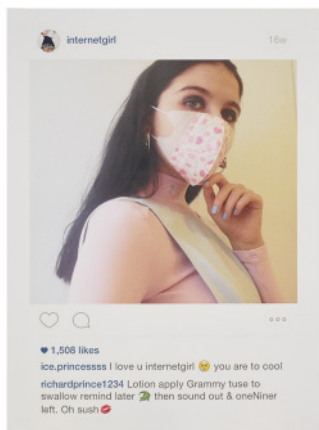
RICHARD PRINCE (B. 1949)

Untitled

signed and dated 'Richard Prince 2014-15' (on the overlap)
acrylic, inkjet and oilstick on canvas
69½ x 78½ in. (176.5 x 199.4 cm.)
Executed in 2014-2015.

\$200,000-300,000





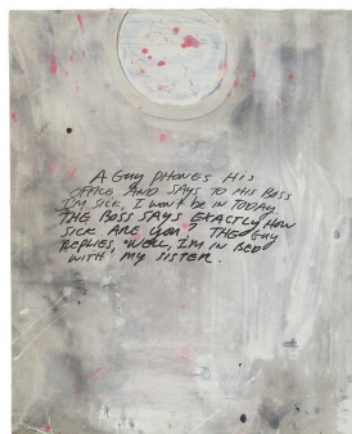
491

RICHARD PRINCE (B. 1949)

Untitled (Portrait)

signed and dated 'Richard Prince 2014' (on the overlap)
inkjet on canvas
65¾ x 48¾ in. (167 x 123.8 cm.)
Executed in 2014.

\$50,000-70,000



492

RICHARD PRINCE (B. 1949)

Untitled (t-shirt)

signed and dated 'Richard Prince 1998' (on the reverse)
acrylic, silkscreen and t-shirt on canvas
26½ x 21 in. (67.3 x 53.3 cm.)
Executed in 1999.

\$30,000-40,000



493

JEFF KOONS (B. 1955)

Flower Drawing (Orange)

signed and numbered 'Jeff Koons 5/13' (on the reverse)
mirror-polished stainless steel with transparent color coating
29¾ x 29¾ x ¾ in. (75.9 x 75.9 x 1.6 cm.)
Executed in 2011. This work is number five from an edition of thirteen plus two artist's proofs.

\$70,000-100,000

494

JOSH SPERLING (B. 1984)

Untitled (Pyramid 2)

signed and dated 'Sperling '18' (on the reverse)
acrylic on shaped and joined canvases mounted on panel, in five parts
27 x 30 in. (68.6 x 76.2 cm.)
Executed in 2018.

\$20,000-30,000



495

JOSE PARLA (B. 1973)

Time's Will

signed, inscribed, titled and dated 'Time's Will 2020 © Jose Parla' (on the reverse)
oil, acrylic, enamel, collage and plaster on canvas
50 x 40 in. (127 x 101.6 cm.)
Executed in 2020.

\$40,000-60,000



496

UGO RONDINONE (B. 1964)

FÜNFUNDZWANZIGSTERAUGUSTZWEITAUSENDUNDEL F

signed and dated 'u rondinone 2011' (on the reverse)
acrylic on canvas
36 x 36 in. (91.4 x 91.4 cm.)
Executed in 2011. This work is accompanied by a certificate of authenticity signed by the artist.

\$20,000-30,000





PROPERTY FROM THE FOUNDATION MIREILLE AND JAMES LÉVY
497

ALEXANDER CALDER (1898-1976)

Mushroom Has Red Face

standing mobile—sheet metal, rod, wire and paint
32 3/8 x 24 1/2 x 20 1/2 in. (82.2 x 62.2 x 52.1 cm.)
Executed in 1949.

\$400,000-600,000



498

ANDY WARHOL (1928-1987)

Ladies and Gentlemen (Alphonso Panelli)

signed and dated 'Andy Warhol 75' (on the overlap)
acrylic and silkscreen ink on canvas
32 x 26 in. (81.3 x 66.0 cm.)
Painted in 1975.

\$400,000-600,000



499

PETER SAUL (B. 1934)

Picasso's Girl in the Mirror I

signed and dated 'Saul '78' (lower right)
acrylic on paper
40 x 30 in. (101.6 x 76.2 cm.)
Painted in 1978.

\$80,000-120,000

500

ROBERT COLESCOTT (1925-2009)

Artistry + Reality, Mexicali Rose

signed and dated 'R Colescott 80' (lower left); signed again with the artist's initials, titled and dated again 'RHC SEPT. 1980 ARTISTRY + REALITY - MEXICALI ROSE' (on the overlap)
acrylic on canvas
16 x 18 in. (40.6 x 45.7 cm.)
Painted in 1980.

\$40,000-60,000



501

ANDY WARHOL (1928-1987)

Untitled (Mick Jagger and Charlie Watts)

signed 'Andy Warhol' (lower right); stamped with the Andy Warhol Authentication Board, Inc. stamp and numbered 'A117.107' (on the reverse)
photo transfer on acetate and paper collage on paper
19 x 17 1/2 in. (48.3 x 44.5 cm.)
Executed circa 1977. This work is accompanied by a certificate of authenticity issued by the Andy Warhol Art Authentication Board, Inc. and numbered with the identification number A117.107.

\$70,000-100,000



502

ANDY WARHOL (1928-1987)

Terrier

stamped with the Estate of Andy Warhol and the Andy Warhol Foundation stamps (on the reverse)
acrylic and silkscreen ink on canvas
10 7/8 x 13 3/4 in. (27.5 x 35 cm.)
Executed in 1983.

\$80,000-120,000





503

ANDY WARHOL (1928-1987)

Beatles

stamped with the Estate of Andy Warhol and the Andy Warhol Foundation stamps and numbered 'UP13.13' (on the reverse)
screenprint in colors on Lenox Museum Board
31 x 40¼ in. (78.7 x 102.2 cm.)
Executed in 1980. This work is one of a small number of impressions.

\$50,000-70,000



PROPERTY FROM A NEW YORK CHARITABLE FAMILY TRUST

°504

JEAN DUBUFFET (1901-1985)

Sequence XIV

signed with the artist's initials and dated 'J.D. 79' (lower left)
acrylic and paper collage on paper
13¾ x 10½ in. (35.3 x 25.7 cm.)
Executed in 1979.

\$60,000-80,000



PROPERTY FROM A NEW YORK CHARITABLE FAMILY TRUST

°505

JEAN DUBUFFET (1901-1985)

Site avec 14 personnages

signed with the artist's initials and dated 'J.D. 80' (lower center)
India ink on paper
20¾ x 13¾ in. (50.1 x 34.9 cm.)
Executed in 1980.

\$40,000-60,000

506

ROBERT RAUSCHENBERG (1925-2008)

Untitled

signed and dated 'Rauschenberg 68' (lower center)
gouache, solvent transfer, colored pencil and graphite on paper
22½ x 29¾ in. (56.2 x 75.9 cm.)
Executed in 1968.

\$80,000-120,000



507

HELEN FRANKENTHALER (1928-2011)

Untitled

signed 'Frankenthaler' (lower right)
acrylic on paper
29¾ x 42 in. (75.6 x 106.7 cm.)
Painted in 1978.

\$80,000-100,000



508

YVONNE THOMAS (1913- 2009)

The Bridge

signed and dated 'Yvonne Thomas 1953' (on the reverse)
oil on canvas
40 x 48 in. (101.6 x 121.9 cm.)
Painted in 1953.

\$30,000-50,000





PROPERTY FROM A PRIVATE AMERICAN COLLECTION
509

CHARLES ALSTON (1907-1977)

Troubadour

signed 'Alston' (lower right)
oil on canvas
40 x 30 in. (101.6 x 76.2 cm.)
Painted circa 1955.

\$60,000-80,000



PROPERTY FROM A PRIVATE AMERICAN COLLECTION
510

CHARLES WHITE (1918-1979)

Contemplation

signed 'Charles' (lower right)
oil on canvas laid down on canvas
18 1/4 x 14 in. (46.1 x 35.6 cm.)
Painted circa 1934.

\$30,000-50,000



PROPERTY FROM THE COLLECTION OF MYRON CALHOUN
511

ROMARE BEARDEN (1911-1988)

Mecklenberg Morning

signed 'Bearden' (lower left)
watercolor, graphite and printed paper collage on panel
9 x 6 in. (22.9 x 15.2 cm.)
Executed in 1979.

\$70,000-100,000

512

DINDGA MCCANNON (B. 1947)

Harlem Women Series Cameo circa 1950

signed, titled and dated "'Harlem Women Series Cameo circa 1950"
dindga 2012' (on a fabric label affixed to the reverse)
acrylic, lace, snakeskin, Angelina fibers, sequins, beads and fabric
collage on felt-backed cotton
18 1/4 x 15 1/2 in. (46.4 x 39.4 cm.)
Executed in 2012.

\$10,000-15,000



PROPERTY FROM A PRIVATE AMERICAN COLLECTION
513

MICHAEL (CORINNE) WEST (1908-1991)

Franconia Notch

signed, titled and dated 'Michael West/'Franconia Notch'/Aug 1965'
(on the reverse)
oil and postcard collage on canvas
50 x 36 in. (127 x 91.4 cm.)
Executed in 1965.

\$30,000-50,000



AN ENQUIRING EYE: PROPERTY FROM A DISTINGUISHED
PRIVATE COLLECTOR

514

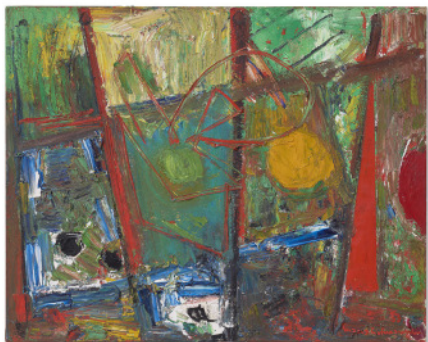
ELAINE DE KOONING (1918 - 1989)

Red and Yellow Oxide Wall (Cave #176)

signed with the artist's initials 'E. de K' (lower right); signed with the
artist's initials again, titled and dated 'E de K "Red and Yellow Oxide
Wall" '87' (on the stretcher)
acrylic on canvas
30 x 40 in. (76.2 x 101.6 cm.)
Painted in 1987.

\$40,000-60,000





515

HANS HOFMANN (1880-1966)

Composition No. 15

signed and dated '53 hans hofmann' (lower right); signed again, titled, inscribed and dated again 'Composition No. 15/53 (Teecatle) [sic] hans hofmann' (on the stretcher)
oil on canvas
30 x 38 in. (76.2 x 96.5 cm.)
Painted in 1953.

\$150,000-200,000

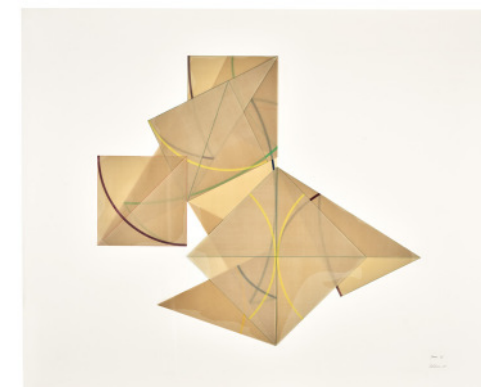
518

DOROTHEA ROCKBURNE (B. 1932)

Arena VI

signed, titled and dated 'Arena VI Rockburne, 78' (lower right)
colored pencil, varnish and glue on vellum collage mounted on rag board
47 x 58 1/4 in. (119.4 x 149.2 cm.)
Executed in 1978.

\$20,000-30,000



PROPERTY FROM
**SONDRA
GILMAN**
THE ESTATE OF



516

THEODOROS STAMOS (1922-1997)

The Puritan

signed, titled and dated 'STAMOS "THE PURITAN" 1959' (on the stretcher)
oil on canvas
70 7/8 x 60 1/8 in. (180 x 152.8 cm.)
Painted in 1959.

\$70,000-100,000

519

ANNE TRUITT (1921-2004)

Foreign Shore

signed, titled and dated 'FOREIGN SHORE Truitt 79' (on the reverse)
acrylic on canvas
8 x 34 1/8 in. (20.3 x 86.7 cm.)
Painted in 1979.

\$50,000-70,000



PROPERTY FROM
**SONDRA
GILMAN**
THE ESTATE OF



517

LOUISE NEVELSON (1899-1988)

Tropical Tree X

black paint on welded aluminum
77 x 50 x 18 in. (195.6 x 127 x 71.1 cm.)
Executed in 1972.

\$80,000-120,000

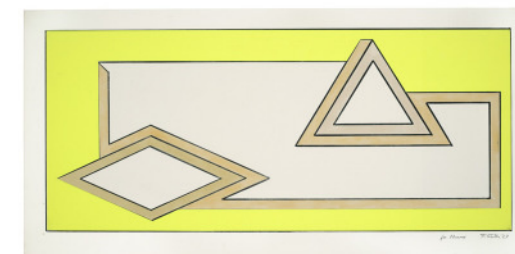
520

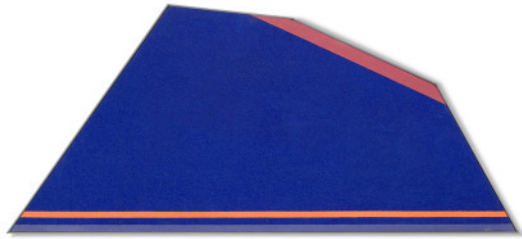
FRANK STELLA (B. 1936)

Untitled (Study for Stacks)

signed, dedicated and dated "for Manny F. Stella '67" (lower right)
ink and paper collage on paper
17 3/4 x 36 1/8 in. (45.1 x 91.8 cm.)
Executed in 1967.

\$50,000-70,000





521

KENNETH NOLAND (1924-2010)

Arch Blue with Orange, Red, Blue

signed, titled and dated 'ARCH-BLUE W ORANGE-RED-BLUE 1980
Kenneth Noland ©' (on the reverse)
acrylic on shaped canvas
17½ x 39½ in. (44.5 x 100.3 cm.)
Painted in 1980.

\$80,000-120,000



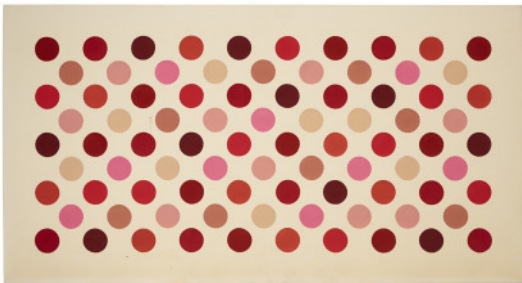
522

KENNETH NOLAND (1924-2010)

Songs: "What's New" (Bobby Haggart)

signed, titled and dated 'SONGS: "WHAT'S NEW"
(BOBBY HAGGART) Kenneth Noland © 1984' (on the reverse)
acrylic on canvas
83½ x 69½ in. (212.1 x 176.5 cm.)
Painted in 1984.

\$150,000-200,000



523

THOMAS DOWNING (1928-1985)

Grid Ten

signed, titled and dated 'GRID TEN - 1/70 - DOWNING'
(on the overlap)
acrylic on canvas
64 x 120¼ in (162.6 x 305.4 cm.)
Painted in 1970.

\$70,000-90,000

524

FRANZ WEST (1947-2012)

Trough

steel rebar, fabric and polyurethane foam
32 x 58 x 29 in. (81.2 x 147.3 x 73.7 cm.)
Executed in 1996. This work is unique.

\$40,000-60,000



525

STUDIO JOB (EST. 1998)

Banana Lamp (Model B)

incised 'JOB 6/6 CWG' (on the underside)
polished bronze, etched glass, paint and LED
11.8 x 11.8 x 7.9 in. (30 x 30 x 20 cm.)
Executed in 2015. This work is number six from an edition of six
plus two artist's proofs.

\$8,000-12,000



526

THE HAAS BROTHERS (B. 1984)

Tony Mo-hawk Mini Beast

incised 'THE HAAS BROTHERS 2017' (on the underside)
caribou fur with cast bronze, silver plated octopus feet and six
hand-carved horns
17 x 12½ x 11 in. (43.2 x 31.8 x 27.9 cm.)
Executed in 2017. This work is unique.

\$20,000-30,000





527

LYNDA BENGLIS (B. 1941)

Knot II

sand-cast aluminum
11½ x 27 x 20½ in. (29.2 x 68.6 x 52.1 cm.)
Executed in 1991.

\$60,000-80,000

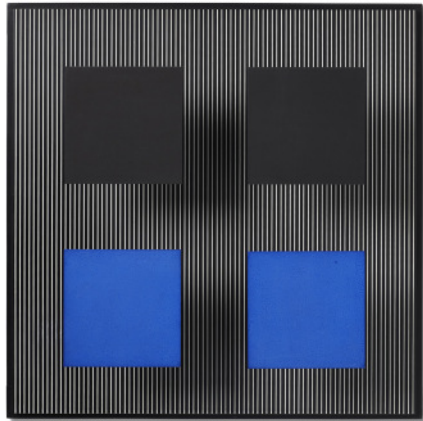
530

ARNALDO POMODORO (B. 1926)

Sfera

incised with the artist's signature and number 'Arnaldo Pomodoro 1/6'
(on the base)
bronze, with base
11½ x 9⅞ x 9⅞ in. (29.21 x 25.10 x 25.10 cm.)
Executed in 1982. This work is number one from an edition of six
plus two artist's proofs.

\$80,000-120,000



528

JESUS RAFAEL SOTO (1923-2005)

Untitled (Cuadrados negra y azul)

signed, inscribed and dated 'PARA MI NEGRA QUERIDA SOTO 1974'
(on the reverse)
acrylic on wood with painted metal
23¾ x 23¾ x 6 in. (60.3 x 60.3 x 15.2 cm.)
Executed in 1974. This work is unique.

\$100,000-150,000

531

ALEXANDER CALDER (1898-1976)

Untitled

signed, dedicated and dated 'à Ray & Jeanne Sutter, Sandy Calder 70'
(lower right)
gouache and ink on paper
29¼ x 43½ in. (74.3 x 109.5 cm.)
Painted in 1970.

\$40,000-60,000



529

MARK DI SUVERO (B. 1933)

Cobu

incised with the artist's signature 'Mark di Suvero' (on the base)
welded steel, in two parts
42 x 48 x 47 in. (106.7 x 121.9 x 119.4 cm.)
Executed in 1974.

\$50,000-70,000

POST-WAR & CONTEMPORARY ART INDEX

A

Abercrombie, G. 203
Abney, N. C. 477
Aboudia 219, 467
Adeniyi-Jones, T. 416
Alston, C. 509
Andre, C. 322
Avedon, R. 225

B

Baechler, D. 345
Baldessari, J. 134, 181, 184
Barnes, E. 141
Barney, M. 487, 488
Bartlett, J. 350
Basquiat, J. M. 196, 200, 201, 202
Bearden, R. 143, 511
Beavers, G. 224
Bell, L. 145
Benglis, L. 152, 153, 160, 168, 169, 527
Bengston, B. A. 147
Berman, W. 334
Bidlo, M. 301
Bienvenu, T. 482
Binion, M. 162
Bleckner, R. 343
Boafo, A. 108
Borofsky, J. 355
Bradford, M. 469
Bradley, J. 468
Brown, C. 354
Brown, D. 406
Brown, R. 130
Büttner, W. 360

C

Calder, A. 140, 497, 531
Calvin, B. 217
Castellani, E. 442
Chamberlain, J. 173, 185
Charlesworth, S. 187
Chia, S. 310, 312
Clegg, O. 411
Clemente, F. 309, 311, 314, 316
Colescott, R. 500
Condo, G. 112, 198, 464, 465, 466
Condo, G. 342
Cooling, J. 307
Cortright, P. 484
Cudahy, A. 422

D

Dávila, J. 432
De Kooning, E. 514
Delaney, B. 167
Di Suvero, M. 529
Dine, J. 244
Dix, S. 405
Dokoupil, J. G. 358
Downing, T. 523
Drexler, L. 105
Drexler, R. 306

Dubuffet, J. 504, 505
Duchamp, M. 302
Dunham, C. 222
Dwi Antono, R. 205

E

Eagleton, A. 403
Eliasson, O. 431

F

Fetting, R. 330
Figgis, G. 479
Finland, T. 339
Fischer, U. 361
Fischl, E. 346
Flanagan, B. 344
Flavin, D. 179, 443
Förg, G. 324
Foulkes, L. 332
Francis, S. 138, 139
Frankenthaler, H. 120, 507
Fratino, L. 204, 472

G

Gaillard, C. 425
Gates, T. 486
Gokita, T. 433
Gorchov, R. 178
Gormley, A. 447
Grotjahn, M. 448
Gursky, A. 455
Guston, P. 242
Guyton, W. 450

H

Haas Brothers 526
Halley, P. 229, 231, 233
Hanson, D. 463
Hernandez, S. 470
Herold, G. 356
Hofmann, H. 515
Holzer, J. 438, 458
Hopper, D. 253
Horn, R. 161
Hughes, S. 103, 218, 478
Humphries, J. 163
Hunt, B. 340

I

Indiana, R. 235, 245
Innerst, M. 341
Ismail, I. 220
Iwamura, E. 210

J

Job, S. 525
Johns, J. 172
Johnson, R. 208
Judd, D. 157

K

Kaabi-Linke, N. 430
Kabakov, I. 426
Kahn, S. 117, 118
Kamijo, S. 215
Kass, D. 363
Katz, A. 128, 133, 474
Katz, A. 348
Kauffman, C. 146
KAWS 483
Kelly, E. 156
Kentridge, W. 456
Keriwck, J. 116
Khomenko, L. 429
Kienholz, E. 148
Kimmel, L. 401
Kippenberger, M. 326, 328, 329
Kippenberger, M., Oehlen, A. 331
Kjærsgaard, M.O. 412
Knoebel, I. 230
Koons, J. 124, 493
Kroger, B. 193
Kusama, Y. 101, 121, 437

L

Landers, S. 365
Lane, L. 357
Lee, A. 419
Leigh, A. 408
LeWitt, S. 174, 177, 439, 440, 441
Lichtenstein, R. 123, 125
Ligon, G. 216
Longevial, I. 407
Longo, R. 228, 452
Lyons, K. 404

M

Marden, B. 321, 323
Masullo, A. 336
McCannon, D. 512
McCracken, J. 444
Mehretu, J. 104
Mikhailov, B. 427
Minter, M. 453
Mogavero, M. 313
Murakami, T. 214
Murakami, T. and Abloh, V. 211
Mutu, W. 418

N

Nagle, R. 150
Namuyimba, G.C. 109
Nara, Y. 212, 213, 423, 424, 460, 461
Ness, R. 421
Netrabile, S. 402
Nevelson, L. 517
Noland, K. 521, 522
Nozkowski, T. 351
Nutt, J. 333

O

Oldenburg, C. 170, 171, 182, 186, 188
Omofemi, O. 110
Orchard, D. 415, 476
Orlando, K. 410
Ossorio, A. 166
Otero, A. 420, 436

P

Parla, J. 495
Party, N. 111
Penn, I. 454
Pensato, J. 195
Perez, E. 359
Pettibone, R. 248, 249, 250, 251, 252
Peyton, E. 475
Plans, E. 113
Pomodoro, A. 530
Price, K. 149, 151
Prince, R. 459, 490, 491, 492
Puryear, M. 183

R

Rauschenberg, R. 506
Reice, M. 317
Reinhardt, A. 176
Reyle, A. 362
Richter, G. 137
Riley, B. 158
Rockburne, D. 518
Rollins, T. and K.O.S. 335, 338
Rondinone, U. 496
Rosenquist, J. 135
Ruscha, E. 144, 154, 197
Ryman, R. 446

S

Sachs, T. 246
Salome 353
Samaras, L. 165
Saul, P. 499
Scharf, K. 223, 232, 234, 237
Scherer, Y. 413
Schifferle, K. 366
Schutz, D. 207, 473
Serra, R. 155, 445, 449, 451
Sherman, C. 194, 226, 227, 489
Sillman, A. 209
Smith, D. 190
Smith, J. 480
Soto, J. 528
Sperling, J. 494
Stamos, T. 516
Starn, M. and D. 337
Stella, F. 136, 236, 520
Stevenson, B. T. 409
Stingel, R. 159
Sturtevant, E. 305

T

Taaffe, P. 315
Taku, E. 114
Tansey, M. 199
Tansey, M. 349
Teller, J. 428
Therrien, R. 347
Thiebaud, W. 106, 107, 122, 132
Thomas, Y. 508
Toor, S. 206, 481
Townley, L. 221
Truitt, A. 519
Turk, G. 364
Twombly, A. 325
Twombly, C. 175
Twombly, C. 318, 319, 320

V

Varejão, A. 434
von Heyl, C. 485

W

Warhol, A. 126, 127, 131, 180, 238, 239, 240, 247, 498, 501, 502, 503
Warhol, A. 303, 304
Warren, R. 435
Wesley, J. 129, 241
Wesselmann, T. 192, 243
Wesselmann, T. 308
West, F. 327
West, F. 524
West, M. 513
White, C. 142, 510
Whitney, S. 102
Whitten, J. 164
Wilke, H. 191
Wilson, R. 352
Winters, T. 189
Wojnarowicz, D. 457, 471
Wong, M. 119
Wool, C. 462

Y

Young, C. 414
Yuskavage, L. 417

Z

Zuckerman, A. 115

ILLUSTRATIONS

FRONT COVER:

LOT 106
Wayne Thiebaud, *Three Ice Cream Cones*, 1964.
© 2022 Wayne Thiebaud Foundation / Licensed by VAGA at Artists Rights Society (ARS), New York.

FRONTISPIECE ONE:

LOT 126
Andy Warhol, *Marilyn Monroe (Marilyn)*, 1967.
© 2022 The Andy Warhol Foundation for the Visual Arts, Inc. / Licensed by Artists Rights Society (ARS), New York.

FRONTISPIECE TWO:

LOT 103
Shara Hughes, *Weeping Blur*, 2018 (detail).
© Shara Hughes.

FRONTISPIECE THREE:

LOT 122
Wayne Thiebaud, *Downhill Intersection*, 2010.
© 2022 Wayne Thiebaud Foundation / Licensed by VAGA at Artists Rights Society (ARS), New York.

FRONTISPIECE FOUR:

LOT 124
Jeff Koons, *Jim Beam*,
© Jeff Koons.

FRONTISPIECE FIVE:

LOT 199
Mark Tansey, *Study on "Installing the Lens,"* 2000 (detail).
© Mark Tansey.

FRONTISPIECE SIX:

LOT 133
Alex Katz, *Man with Brown Hat*, 1979 (detail).
© 2022 Alex Katz / Licensed by VAGA at Artists Rights Society (ARS), New York.

FRONTISPIECE SEVEN:

LOT 194
Cindy Sherman, *Untitled*, 1981 (detail).
© Cindy Sherman. Courtesy the artist and Hauser & Wirth.

FRONTISPIECE EIGHT:

LOT 123
Roy Lichtenstein, *Collage for CARE Poster*, 1993 (detail).
© Estate of Roy Lichtenstein.

FRONTISPIECE NINE:

LOT 127
Andy Warhol, *Dollar Sign*, 1981 (detail).
© 2022 The Andy Warhol Foundation for the Visual Arts, Inc. / Licensed by Artists Rights Society (ARS), New York.

FRONTISPIECE TEN:

LOT 107
Wayne Thiebaud, *Yo-Yos*, 1963.
© 2022 Wayne Thiebaud Foundation / Licensed by VAGA at Artists Rights Society (ARS), New York.

FRONTISPIECE ELEVEN:

LOT 164
Jack Whitten, *Cultural Shift (Let's Celebrate Lena Horne) A.K.A. The Lena Horne Jubilee*, 2010 (detail).
© Jack Whitten Estate. Courtesy the Estate and Hauser & Wirth.

OPPOSITE SALE INFORMATION:

LOT 172
Jasper Johns, *O through 9*, 1979 (detail).
© 2022 Jasper Johns / Licensed by VAGA at Artists Rights Society (ARS), New York.

OPPOSITE CONTACT INFORMATION:

LOT 144
Ed Ruscha, *Western with Fly*, 1967.
© Ed Ruscha.

OPPOSITE CALENDAR:

LOT 119
Matthew Wong, *Mili's Corner*, 2019.
© 2021 Monita K.Y. Cheng / Artists Rights Society (ARS), New York.

SESSION I DIVIDER:

LOT 137
Gerhard Richter, *Flow (933-1)*, 2013 (detail).
© Gerhard Richter 2022 [0093].

THE COLLECTION OF THOMAS AND DORIS AMMANN DAY SALE DIVIDER:

LOT 248
Richard Pettibone, *Andy Warhol, Flowers*, 1970.
© 2022 The Andy Warhol Foundation for the Visual Arts, Inc. / Licensed by Artists Rights Society (ARS), New York.

SESSION II DIVIDER:

LOT 420
Angel Otero, *Title to be Determined*, 2022 (detail).
© Angel Otero.