



ruth mclees

between two
rivers

ruth mclees

between two
rivers

11 june - 11 july 2015

gallery/ten
23 windsor place
cardiff, wales

© 2015 gallery/ten
23 windsor place
cardiff, wales

all rights reserved. no part of this catalogue
may be reproduced in any form without permission
in writing from gallery/ten ltd

between two rivers

press release

gallery/ten presents *between two rivers*, a solo exhibition of new work by artist ruth mclees

between two rivers is a series of work inspired by the area of cardiff in which mclees lives + works - the area between the rivers taff + ely, reaching down to cardiff bay. mclees' fascination with the old docks area of the city - its vistas, landmarks + people - propels her exploration of the area. the works created act as records of her journeys + encounters - not only in the imagery depicted but also in the materials used in creating each piece. salt extracted from the water of the bay + pigment created from the surrounding plants are used as paint + as textures layered within transparent glazes + resins

transforming her studio into a laboratory, mclees explores the artistic potential of industrial + scientific materials, creating richly toned + multi-layered paintings on glass. the results emerging from this experimentation are presented here in a body of work which further demonstrates her standing as a truly experimental artist, championing the crossover of art + science

cyflwyno gallery/ten *rhwng dwy afon*, arddangosfa unigol gan yr artist ruth mclees

rhwng dwy afon

datagniad

ysbrydolir y gyfres newydd yma o waith gan yr ardal rhwng yr afonydd taf + elai, hyd at fae caerdydd - yr ardal sy'n gartref + yn fan gweithio i mclees. gyrrir ei hymchwil yng ngolygfeydd, nhirnodau + phobl ardal hen ddociau'r ddinas gan ddiddordeb personol mclees. gweithreda'r gwaith a grëir fel cofnodion o'i theithiau + chyfarfyddiadau - nid yn unig yn y delweddau a ddarlunnir ond hefyd yn y deunyddiau a ddefnyddir i greu pob darn. troir halen a ddistyllir o ddwr y bae yn ddefnydd i greu graenau gwahanol + troir pigment a grëir o blanhigion cyfagos yn baent o fewn haenau o wydreddau tryloyw

trawsnewidia mclees ei stiwdio i mewn i labordy er mwyn archwilio potensial artistig deunyddiau gwyddonol + diwydiannol, gan greu peinitadau aml-haenog ar wydr. cyflwynir yma y canlyniadau sy'n deillio o'r arbrofi hwn, gyda'r gyfres yma o waith yn seilio mclees ymhellach fel artist arbrofol iawn, artist a hyrwydda'r man croesi rhwng celf + gwyddoniaeth



DALER ROWNEY
FW.

AP

Indestructible • résistant à l'eau sur papier et à la lumière
Ink

white tree, 2015
acrylic, pigment + resin on acrylic
53 x 36cm
£900



river bank 1, 2015
acrylic, pigment + resin on glass
9cm diameter
£225



river bank 2, 2015
acrylic, pigment + resin on glass
9cm diameter
£225



sea pink, 2015
acrylic, pigment + resin on glass
9cm diameter
£225





borage, 2015
acrylic + resin on glass
8 x 3cm
£225

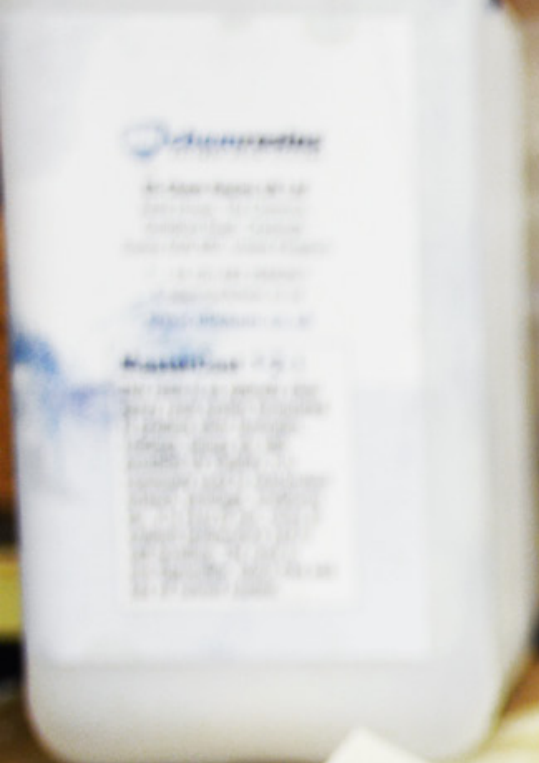


seed head 1, 2015
acrylic, pigment + resin on glass
11 x 12cm
£225



seed head 2, 2015
acrylic, pigment + resin on glass
18 x 13cm
£245





grangetown sunset, 2015
ink, pigment + resin on glass
34 x 70cm
£1000



towards brains, 2015
ink, pigment + resin on glass
24 x 50cm
£750



moored, 2015
ink, pigment + resin on glass
24 x 50cm
£750





sentinel, 2015
acrylic + resin on copper
11 x 11cm
£225



grasses, wetlands, 2015
acrylic, pigment + resin on glass
13 x 22cm
£295



sunset, 2015
acrylic, pigment + resin on glass
13 x 18cm
£245



tangle, 2015
ink, pigment + resin on glass
18 x 24cm
£450



bough, 2015
chinagraph on resin
8 x 13cm
£100



night trees 1, 2015
chinagraph on resin
10 x 8cm
£100



night trees 2, 2015
chinagraph on resin
12 x 13cm
£120



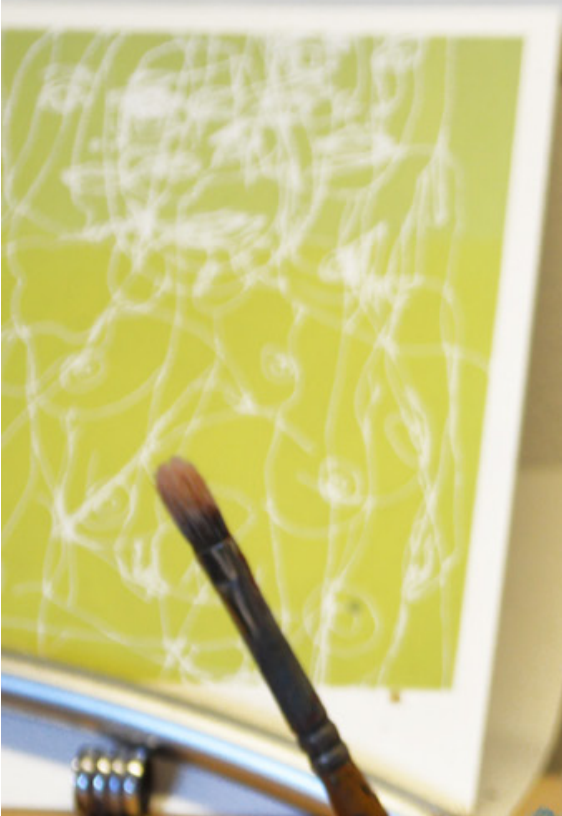
night trees 3, 2015
chinagraph on resin
18 x 19cm
£140



OR ART

TEL: 01234 567890

WWW.COMANY.CO.UK



The feel
of the
moment

Pro
Arte
The Artists' Set



Common

EVOK

Perf

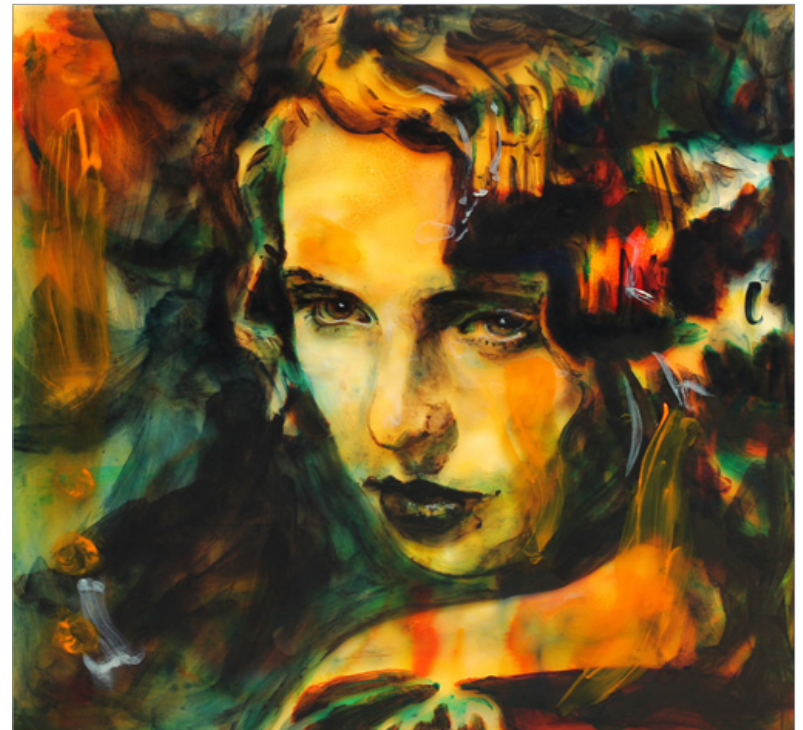
teal, 2015
acrylic, pigment + resin on glass
22 x 22cm
£450



dark, 2015
acrylic, pigment + resin on glass
22 x 22cm
£450



orange, 2015
acrylic, pigment + resin on glass
22 x 22cm
£450



pale lady, 2015
acrylic, pigment + resin on glass
22 x 22cm
£450



pink, 2015
acrylic, pigment + resin on glass
22 x 22cm
£450

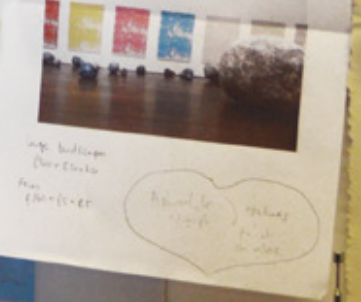
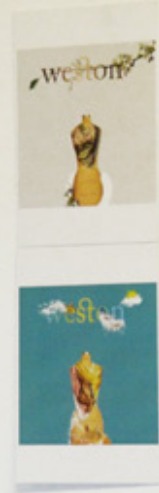


yellow, 2015
acrylic, pigment + resin on glass
22 x 22cm
£450





Handwritten notes on a large sheet of paper. The word "Verdigris" is written in red ink. Other text includes "This is the way...", "The way to the...", "The way to the...", "The way to the...", "The way to the...". There are also some diagrams and sketches.



Handwritten notes on a small piece of paper, including phrases like "The way to the...", "The way to the...", "The way to the...".



through the trees, 2015
acrylic + resin on glass
10 x 15cm
£245



through water, 2015
acrylic + resin on glass
11 x 12cm
£225



view from a hill, pylons, 2015
acrylic, pigment, glitter + resin on glass
13 x 18cm
£245



view from a hill, turbines, 2015
acrylic, pigment + resin on glass
10 x 10cm
£225



tree series 1, 2015
acrylic, pigment + resin on acrylic
36 x 30cm
£600



tree series 2, 2015
acrylic, pigment + resin on acrylic
36 x 30cm
£600



tree series 3, 2015
acrylic, pigment + resin on acrylic
36 x 28cm
£600



tree series 4, 2015
acrylic, pigment + resin on acrylic
36 x 28cm
£600



tree series 5, 2015
acrylic, pigment + resin on acrylic
36 x 28cm
£600



tree series 6, 2015
acrylic, pigment + resin on acrylic
36 x 28cm
£600





LOCAL LIFE

Handwritten notes and sketches on a piece of paper pinned to the wall.

Tuesday
New Bond Street
An invitation to design

LIVING
m

BRUSH COLOURS

ruth mclees graduated with a ba [hons] in fine art from university of wales institute cardiff in 2004 + has since widely exhibited her vibrant works throughout the uk

selected solo + group exhibitions

chroma utopia, gallery/ten, cardiff, wales [2013], personal effects, llantarnam grange arts centre, cwmbarn [2012], room tour, oriel canfas, cardiff, wales [2011], waterloo tea house, cardiff, wales [2009], mwnci, cardiff, wales [2009], moving scenes, st david's hall, cardiff, wales [2009], faces + scenes, the severnshed, bristol, england [2008], on show, bbc wales broadcasting house, cardiff, wales [2006], mwnci, cardiff, wales [2006], miss demeanours, oriel capsule gallery, cardiff, wales [2005], ruth mclees, oriel capsule gallery, cardiff, wales [2004]

summer, gallery/ten, cardiff, wales [2014], spring, gallery/ten, cardiff, wales [2014], winter, gallery/ten, cardiff, wales [2014], eclectic, panter + hall, piccadilly, london, england [2013], winter, gallery/ten, cardiff, wales [2012], affordable art fair, battersea, london, england [2012], cardiff open juried exhibition, cardiff, wales [2012], national eisteddfod wales, vale of glamorgan, wales [2012], identify me, mission gallery, swansea, wales [2012], retro, beetroot tree gallery, derbyshire, england [2012], project/ten, various locations, cardiff, wales [2011], parallax art fair, pall mall, london, england [2011], beckford fine art, acquire arts, battersea, london, england [2011], art wales, newport museum, wales [2011], artemisia, contemporary welsh female artists, st david's hall, cardiff, wales [2011], exposed: textiles in the open, national botanic gardens of wales [2010], beckford fine art, herefordshire, england [2010], journeys, fibre art wales, ruthin library gallery, wales [2010]

graddiodd *ruth mclees* o athrofa prifysgol cymru caerdydd yn 2004 + ers hynny, mae wedi arddangos ei phortreadau yn eang ar draws y du

arddangosfeydd undyn + grwp dethol

chroma utopia, gallery/ten, caerdydd, cymru [2013], personal effects, llantarnam grange arts centre, cwmbarn, cymru [2012], room tour, oriel canfas, caerdydd, cymru [2011], waterloo tea house, caerdydd, cymru [2009], mwnci, caerdydd, cymru [2009], moving scenes, neuadd dewi sant, caerdydd, cymru [2009], faces + scenes, the severnshed, bryste, lloegr [2008], on show, bbc wales broadcasting house, caerdydd, cymru [2006], mwnci, caerdydd, cymru [2006], miss demeanours, oriel capsule gallery, caerdydd, cymru [2005], ruth mclees, oriel capsule gallery, caerdydd, cymru [2004]

haf, gallery/ten, caerdydd, cymru [2014], gwanwyn, gallery/ten, caerdydd, cymru [2014], gaeaf, gallery/ten, caerdydd, cymru [2014], eclectic, panter + hall, piccadilly, llundain, lloegr [2013], gaeaf, gallery/ten, caerdydd, cymru [2012], affordable art fair, battersea, llundain, lloegr [2012], cardiff open, caerdydd, cymru [2012], eisteddfod genedlaethol cymru, bro morgannwg, cymru [2012], identify me, mission gallery, abertawe, cymru [2012], retro, beetroot tree gallery, derby, lloegr [2012], project/ten, lleoliadau ledled y ddinas, caerdydd, cymru [2011], parallax art fair, pall mall, llundain, lloegr [2011], beckford fine art, acquire arts, battersea, llundain, lloegr [2011], art wales, amgueddfa casnewydd, cymru [2011], artemisia, contemporary welsh female artists, neuadd dewi sant, caerdydd, cymru [2011], exposed: textiles in the open, gerddi fotaneg genedlaethol cymru [2010], beckford fine art, hereford, lloegr [2010], journeys, fibre art wales, oriel rhuthin, cymru [2010]

gallery/
t e n

this catalogue is published on the occasion of the exhibition
cyhoeddir y catalog hwn ar achlysur arddangosfa

ruth mclees

between two
rivers

11 june - 11 july 2015

gallery/ten
23 windsor place
cardiff, wales

copyright 2015 / hawlfraint 2015
gallery/ten + ruth mclees

images / delweddau
gallery/ten + ruth mclees

text / testun
cat gardiner

design / cynllun
cat gardiner

gallery-ten.co.uk
info@gallery-ten.co.uk
@gallery__ten

first floor 23 windsor place
cardiff cf10 3by | +44 [0]29 2034 5978
tuesday-friday 10-6 | saturday 10-5