



r u t h m c l e e s

chroma utopia

8 - 30 november tachwedd 2013

r u t h m c l e e s

chroma utopia

8 – 30 november 2013

gallery/ten presents a solo exhibition by artist ruth mclees. mclees graduated from university of wales institute cardiff in 2004 + has since widely exhibited her vibrant portraits throughout the uk

‘chroma utopia’ is a body of 27 new works which showcase mclees’ latest experimentation into the crossover of art + science. mclees’ fascination with layering – that of placing transparent glazes over the surface of a painting – has become the recognisable signature of her practice. this recent collection of work sees a natural progression to mclees’ portraits, where glazes, resin + glues skilfully interact with the image underneath, serving to highlight + reveal the painted figure

inspired by the work of the 19th century german analytical chemist, f.f. runge, mclees transformed her studio into a laboratory in order to explore the artistic potential of industrial + scientific materials. the results emerging from this experimentation are presented here in a series of colourful, jewel-like paintings, where pigments are separated into their pure components to create chromatic glazes from which utopian figures emerge; ‘perfect colour + perfect beauty are united’

r u t h m c l e e s

chroma utopia

6 medi – 5 hydref 2013

cyflwyna gallery/ten arddangosfa unigol gan yr artist ruth mclees. graddiodd mclees o athrofa prifysgol cymru caerdydd yn 2004 + ers hynny, mae wedi arddangos ei phortreadau yn eang ar draws y du

mae 'chroma utopia' yn gorff o 27 o weithiau newydd sy'n cyflwyno arbrofion diweddaraf mclees o gylch y man croesi rhwng celf + gwyddoniaeth. diddordeb mclees yw haenau - gan osod gwydreddau tryloyw dros wyneb y peintiadau - ac mae'r arddull yma wedi dod yn nodwedd adnabyddus o'i gwaith. gwela'r casgliad hwn ddilyniant naturiol i bortreadau mclees, lle defnyddia wydreddau, resin + glud yn fedrus i dynnu sylw + datgelu y ffigwr wedi'i baentio

wedi'i hysbrydoli gan waith y cemegydd dadansoddol almaenig o'r 19eg ganrif, f. f. runge, trawsnewidiodd mclees ei stiwdio i mewn i labordy er mwyn archwilio potensial artistig deunyddiau gwyddonol + diwydiannol. cyflwynir yma y canlyniadau sy'n deillio o'r arbrofi hwn mewn cyfres o luniau lliwgar fel tlysau, lle gwahenir pigmentau i'w cydrannau pur i greu gwydreddau cromatig - ac ymddangosir ffigurau iwtopaidd ohonynt; 'harddwch perfffaith + lliw perfffaith yn uno'



Floribunda 1

acrylic, pigment, surface preparation + resin on fabric 2013 | 51 x 31cm | £650



black to bloom 2

acrylic, pigment, surface preparation + resin on fabric 2013 | 51 x 31cm | £650



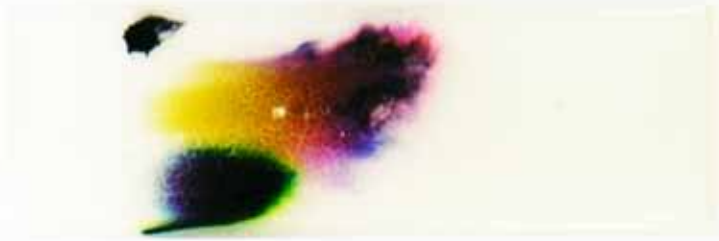
black to bloom 1

acrylic, pigment, surface preparation + resin on fabric 2013 | 20 x 25cm | £450



Floribunda 2

acrylic, pigment, surface preparation + resin on fabric 2013 | 20 x 25cm | £450



chroma 1
pigment, sodium chloride, magnesium sulphate + starch on glass 2013 | 12 x 17cm | £80

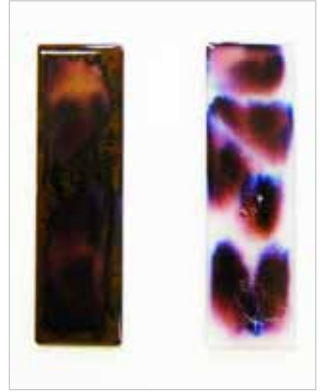
4



3



2



chroma 4

pigment, magnesium sulphate, cellulose + resin on glass 2013 | 12 x 12cm | £75

chroma 3 + 2

pigment, sodium chloride + starch on glass 2013 | 12 x 12cm | £75



chroma 5

pigment, sodium chloride, magnesium sulphate + starch on glass 2013 | 12 x 17cm | £80



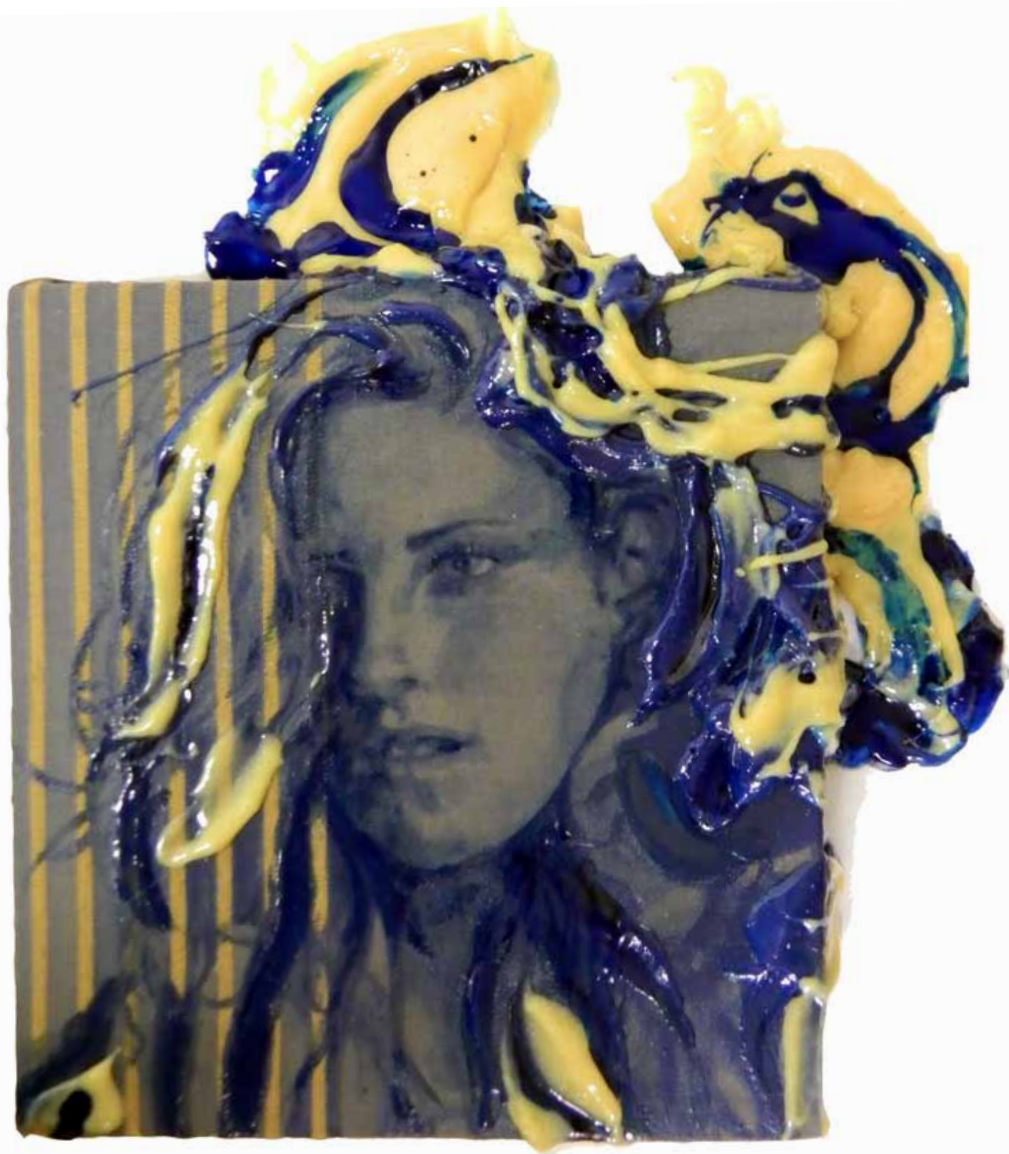
blush + stain 1

acrylic, pigment, resin + mixed media on fabric 2013 | 25 x 20cm | £450



blush + stain 2

acrylic, pigment, surface preparation + resin on fabric 2013 | 25 x 20cm | £450



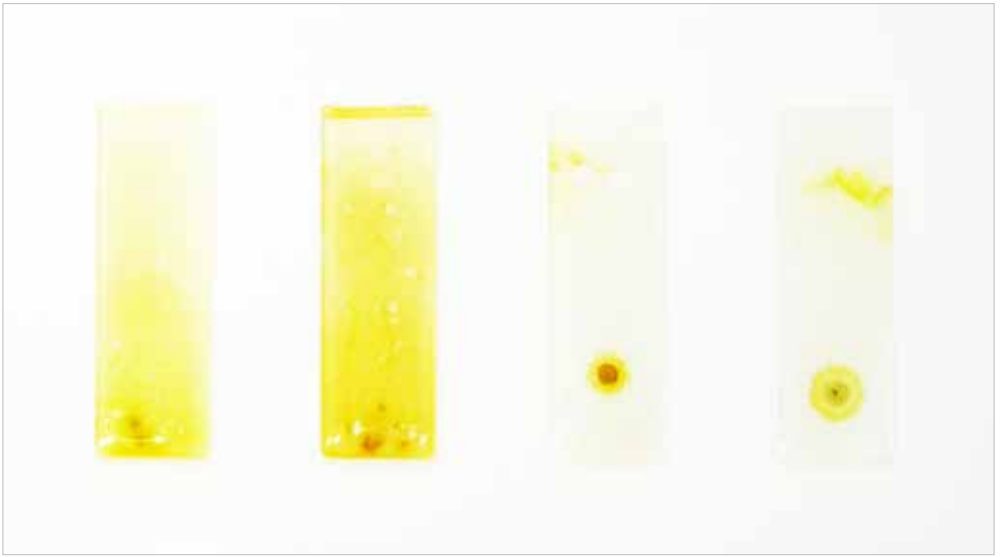
blue hue

acrylic + polyurethane elastomer on fabric 2013 | 16 x 17cm | £175



vermillion

acrylic, water soluble fabric + resin on fabric 2013 | 16 x 17cm | £150



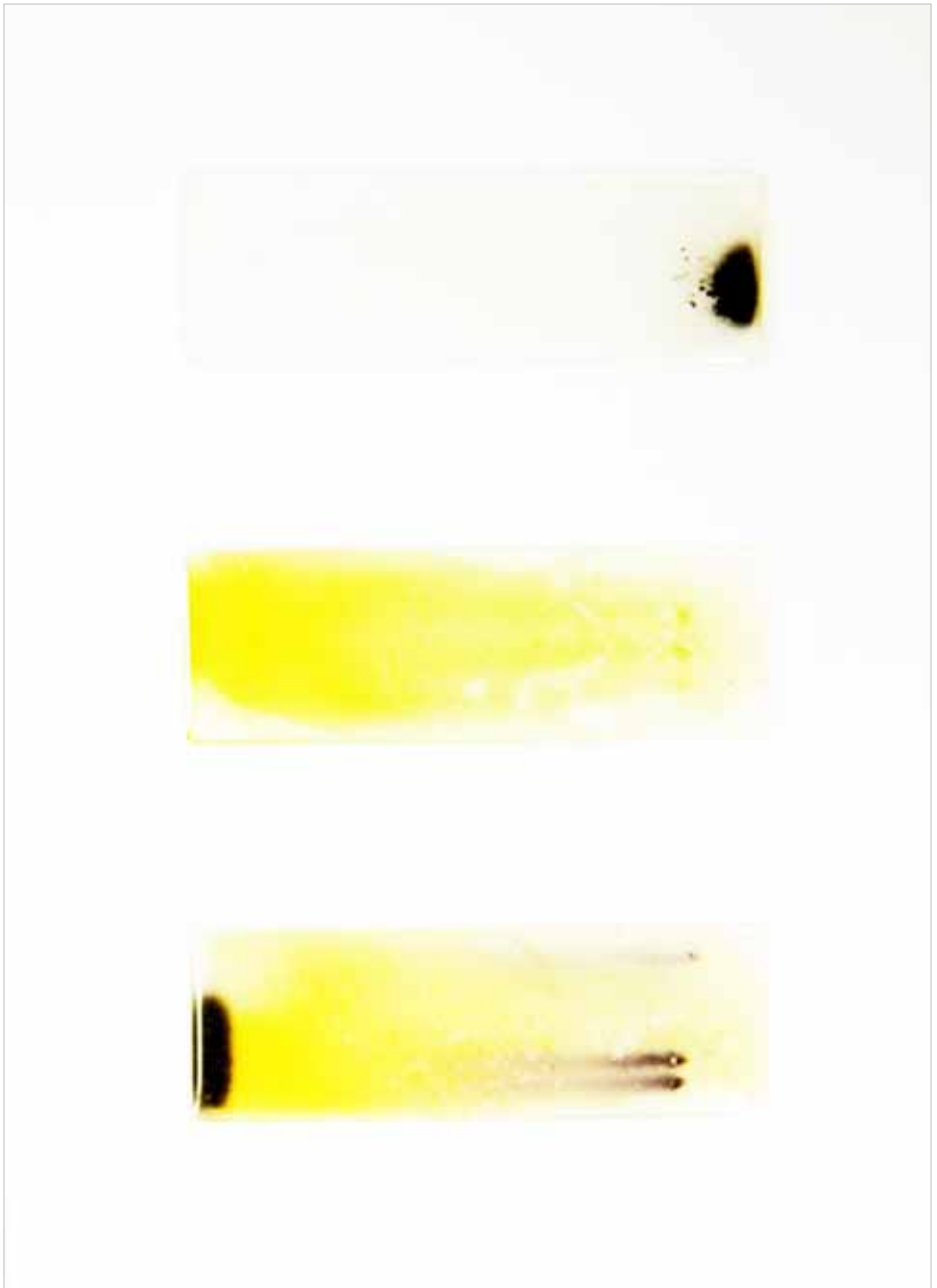
field 2

buttercup, cherry blossom + buddleia plants pigment, cellulose and resin on glass 2013 | 22 x 22cm | £85



field 3

buttercup + buddleia plants pigment, starch + resin on glass 2013 | 12 x 12cm | £75



field 1

plant pigment, starch + resin on glass 2013 | 12 x 17cm | £80



black to suffuse

acrylic, pigment, surface preparation + resin on fabric 2013 | 20 x 25cm | £450



dioxazine

acrylic, pigment, surface preparation + resin on fabric 2013 | 20 x 25cm | £450



Fluoresce

acrylic, pigment, resin + mixed media on fabric 2013 | 20 x 25cm | £450



exuding

acrylic, pigment, surface preparation + resin on fabric 2013 | 20 x 25cm | £450



gauze 1

acrylic, pigment, cellulose + resin on glass 2013 | 25 x 20cm | £100



gauze 2

acrylic, pigment, cellulose + resin on glass 2013 | 25 x 20cm | £100



saturation

acrylic, pigment, resin + mixed media on fabric 2013 | 51 x 31cm | £650



but not forgotten

acrylic on upholstery fabric 2013 | 51 x 31cm | £650



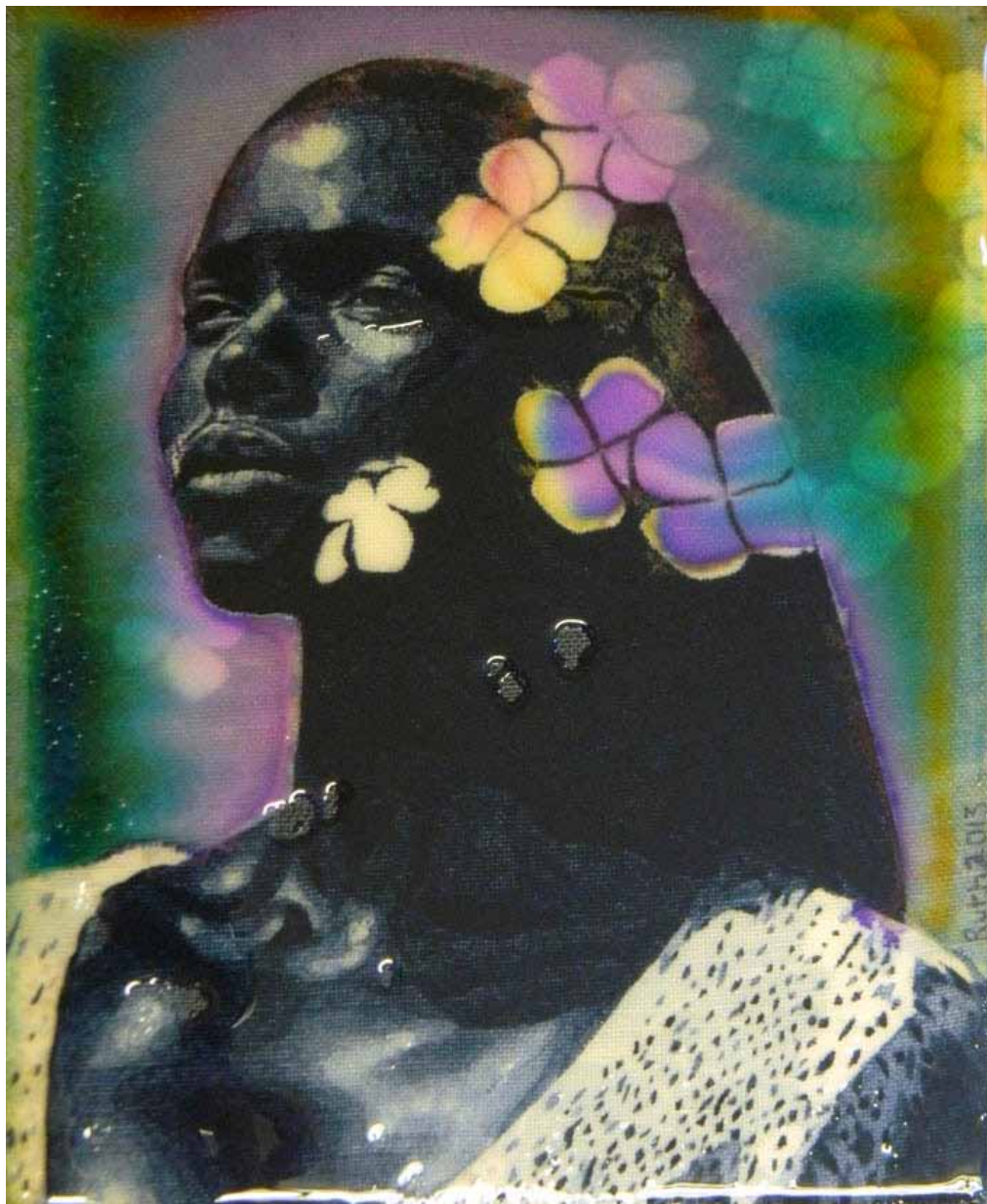
Tuma

acrylic, pigment, surface preparation + resin on fabric 2013 | 20 x 25cm | £450



the green fuse

plant pigment, cellulose + resin on glass 2013 | 12 x 12cm | £80



burst

acrylic, pigment, surface preparation + resin on fabric 2013 | 25 x 20cm | £450



CRYSTAL RESIN

gede

CRYSTALMARZ
KRYSTALHARS

Crystal resin
Hardener & Duracoat
Ready to use

Crystal resin
Hardener & Duracoat
Ready to use

Crystal resin
Hardener & Duracoat
Ready to use

Crystal resin
Hardener & Duracoat
Ready to use

Crystal resin
Hardener & Duracoat
Ready to use

Crystal resin
Hardener & Duracoat
Ready to use

Crystal resin
Hardener & Duracoat
Ready to use

Crystal resin
Hardener & Duracoat
Ready to use

Crystal resin
Hardener & Duracoat
Ready to use

Crystal resin
Hardener & Duracoat
Ready to use

Crystal resin
Hardener & Duracoat
Ready to use

Crystal resin
Hardener & Duracoat
Ready to use

Crystal resin
Hardener & Duracoat
Ready to use

Crystal resin
Hardener & Duracoat
Ready to use

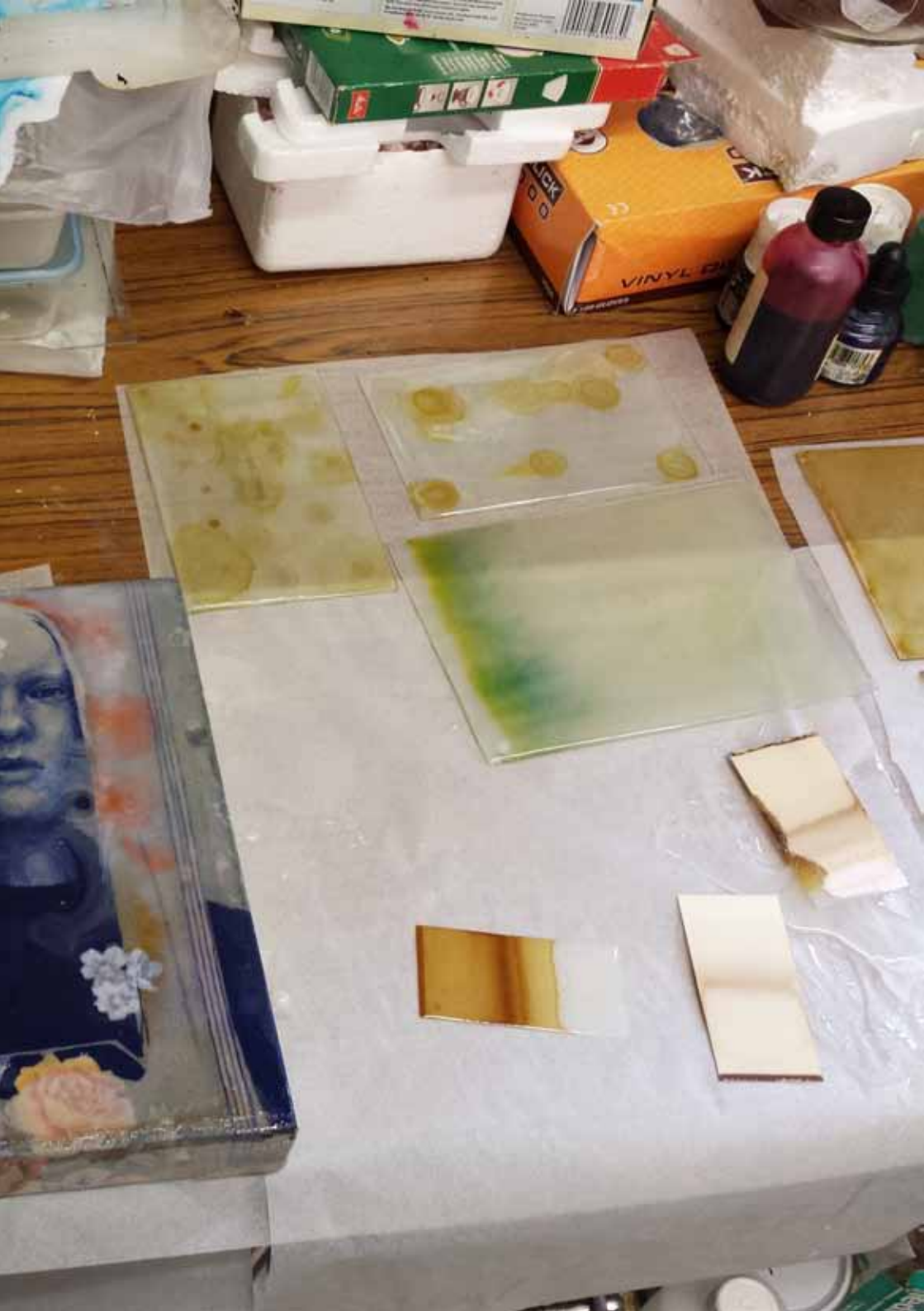
Crystal resin
Hardener & Duracoat
Ready to use

Crystal resin
Hardener & Duracoat
Ready to use

Crystal resin
Hardener & Duracoat
Ready to use

Crystal resin
Hardener & Duracoat
Ready to use







ruth mcLees

r u t h m c l e e s

chroma utopia

my new exhibition draws upon the crossover of art with science

the origin of this work began in a research + development project supported by the arts council of wales + weston earth images to explore the artistic potential of industrial + scientific materials. research led me to discover f.f. runge, the 19th century german analytical chemist + his 'pattern pictures for the friends of beauty'; 'self-grown' pictures developed through chemical interaction of various mineral salts

inspired by this, together with enthusiastic encouragement + feedback from an industrial polymer chemist, i set out to transform my studio into an experimental laboratory + attempt to create runge-like images for myself. chroma utopia presents a selection of the vividly coloured works created as a result. it seemed logical then that i should develop my own 'pattern pictures' to add colour to my already multi-layered figurative paintings. scientific processes + industrial resins are combined to create surface coatings; pigment is separated into its pure components to create chromatic glazes from which utopian figures emerge; perfect colour and perfect beauty are united

in trying to read the watchful faces i have painted i find them inscrutable + impossible to break down as i did with the colour. looking more closely, have i really portrayed utopia or is it something much more sinister?

r u t h m c l e e s

graduated with a ba [hons] in fine art from university of wales institute cardiff in 2004, mclees specialises in contemporary figurative work + portraiture. she is fascinated by the layering of transparent glazes over the surface of a painting + the interaction of these layers with the painted image underneath

selected solo exhibitions

2012 personal effects, llantarnam grange arts centre, cwmbran
2011 room tour, oriel canfas, cardiff, wales
2009 waterloo tea house, cardiff, wales
2009 mwnci, cardiff, wales
2009 moving scenes, st david's hall, cardiff, wales
2008 faces and scenes, the severnshed, bristol, england
2006 on show, bbc wales broadcasting house, cardiff, wales
2006 mwnci, cardiff, wales
2005 miss demeanours, oriel capsule gallery, cardiff, wales
2004 ruth mclees, oriel capsule gallery, cardiff, wales

selected group exhibitions

2013 eclectic, panter + hall, piccadilly, london, england
2012- gallery/ten, windsor place, cardiff, wales
2012 affordable art fair, battersea, london, england
2012 cardiff open juried exhibition, cardiff, wales
2012 national eisteddfod wales, vale of glamorgan, wales
2012 identify me, mission gallery, swansea, wales
2012 retro, beetroot tree gallery, derbyshire, england
2010- project/ten, various locations, cardiff, wales
2011 parallax art fair, pall mall, london, england
2011 beckford fine art, acquire arts, battersea, london, england
2011 fibre voices, fibre art wales, newport museum, wales
2011 artemisia, contemporary welsh female artists, st david's hall, cardiff, wales
2010 exposed: textiles in the open, national botanic gardens of wales
2010 beckford fine art, herefordshire, england
2010 journeys, fibre art wales, ruthin library gallery, wales

r u t h m c l e e s

graddiodd mclees o athrofa prifysgol cymru caerdydd gyda gradd celfyddyd gain yn 2004. ei phrif ddiddordeb yw golau, adlewyrchiad + dull o ddefnyddio haenau + delweddau - a phatrwm yn arbennig. peintia ar ddefnydd patrymog, gan ddefnyddio glud + gwahanol farnais tryloyw i greu darlun sy'n defnyddio patrwm y defnydd fel rhan o wead y llun

arddangosfeydd unigol dethol

- 2012 eiddo personol, canolfan gelfyddydau llantarnam grange, cwmbarn, cymru
- 2011 taith ystafell, oriel canfas, caerdydd, cymru
- 2009 waterloo tea house, caerdydd, cymru
- 2009 mwnci, caerdydd, cymru
- 2009 golygfeydd symud, neuadd dewi sant, caerdydd, cymru
- 2008 wynebau a golygfeydd, y severnshed, bryste, lloegr
- 2006 on show, ty darlledu bbc cymru, caerdydd, cymru
- 2006 mwnci, caerdydd, cymru
- 2005 miss demeanours, oriel capsiwl, caerdydd, cymru
- 2004 ruth mclees, oriel capsiwl, caerdydd, cymru

arddangosfeydd grwp dethol

- 2013 eclectic, panter + hall, piccadilly, llundain, lloegr
- 2012- gallery/ten, windsor place, caerdydd, cymru
- 2012 ffair celf fforddiadwy, battersea, llundain, lloegr
- 2012 arddangosfa agored caerdydd, cymru
- 2012 eisteddfod genedlaethol cymru, bro morgannwg, cymru
- 2012 identify me, mission gallery, abertawe, cymru
- 2012 retro, beetroot tree gallery, swydd derby, lloegr
- 2010- project/ten, amryw o leoliadau, caerdydd, cymru
- 2011 ffair gelf parallax, pall mall, llundain, lloegr
- 2011 beckford fine art, battersea, llundain, lloegr
- 2011 lleisiau ffibr, celf ffibr cymru, amgueddfa casnewydd, cymru
- 2011 artemisia, artistiaid benywaidd cyfoes cymru, neuadd dewi sant, caerdydd, cymru
- 2010 tecstilau yn yr awyr agored, gerddi botaneg cenedlaethol cymru
- 2010 beckford fine art, swydd henffordd, lloegr
- 2010 teithiau, celf ffibr cymru, oriel llyfrgell rhuthun, cymru

gallery/
t e n

this catalogue is published on the occasion of the exhibition
cyhoeddir y catalog hwn ar achlysur arddangosfa

ruth mclees 'chroma utopia'

8 - 30 november

8 - 30 tachwedd

gallery/ten | cardiff | wales

gallery/ten | caerdydd | cymru

copyright 2013 / hawlfraint 2013

ruth mclees + gallery/ten

images of work / delweddau

ruth mclees + kutchibok

text + design / testun + cynllun

cat gardiner

gallery-ten.co.uk
info@gallery-ten.co.uk
@gallery__ten

first floor 23 windsor place
cardiff cf10 3by | +44 [0]29 2034 5978
tuesday-friday 10-6 | saturday 10-5