

ELERI MILLS

October / Hydref 2014

photography by Dewi Tannatt Lloyd

ELERI MILLS

9 October / Hydref - 1 November / Tachwedd 2014

ALL WORKS ARE FOR SALE

Prices on application

MARTIN TINNEY GALLERY
WWW.ARTWALES.COM

Published by Martin Tinney Gallery
Photography by Dewi Tannatt Lloyd

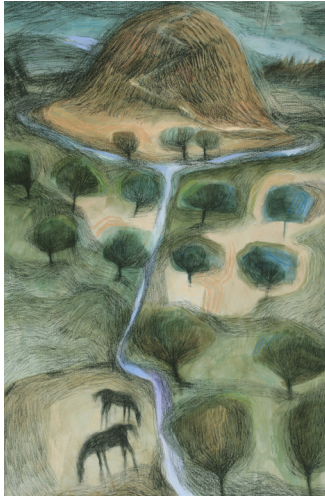
© Eleri Mills and Martin Tinney Gallery

Born in Llangadfan, Powys in 1955, Eleri Mills studied Art and Design at Manchester Polytechnic before returning to live and work in the same Welsh-speaking rural community in which she was brought up. The beautiful landscapes that surround this small community are the greatest influence on Eleri's work. Growing up on a farm, the land has always been integral to Eleri's life and has instilled in her a strong sense of belonging. She depicts a vision of Wales that is multi layered, highly personal, timeless, poetic, real and other worldly.

Her work has been exhibited in London and Wales, throughout Europe, the USA and Japan and is in numerous prestigious collections including; Contemporary Art Society for Wales, National Library of Wales, Whitworth Art Gallery, University of Manchester, MOMA Wales, and National Museums of Scotland. This is her first solo show at Martin Tinney Gallery.

TIRLUN I DYWYSOGION I - IV (LANDSCAPE FOR PRINCES I - IV)

paint, charcoal and pastel on paper 2007 98 x 63cm x 4



ARGOED II (ARCADIA II)

paint, charcoal and pastel on paper 2010 63 x 95cm



TIRLUN BARDDOL (BARDIC LANDSCAPE)

paint, charcoal and pastel on paper 2011 56 x 77cm



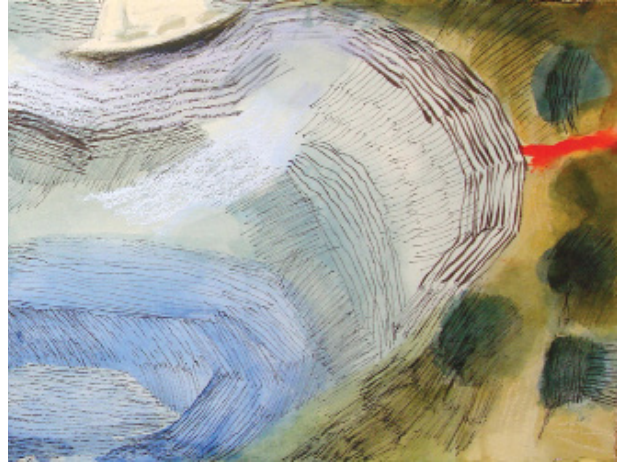
CASTELL I, DYFFFRYN CLWYD (CASTLE I, VALE OF CLWYD)

paint, ink, pastel and charcoal on paper 2011 28 x 76cm



MORDAITH I (VOYAGE I)

paint, ink, pastel and charcoal on paper 2012 28 x 79cm



TIRLUN I (LANDSCAPE I)

ink on acetate 2011 60 x 105cm



LLYGAD Y FFYNNON III (THE SOURCE III)

paint, charcoal and pastel on paper 2011 50 x 137cm



YN YR ARDD (IN THE GARDEN)

paint, charcoal and pastel on paper 2011 50 x 137cm



I LAWR TUAG AT Y BONT (DOWN TOWARDS THE BRIDGE)

charcoal on paper 2006 30 x 42cm



LLYGAD Y FFYNNON II (THE SOURCE II)

paint, charcoal and pastel on paper 2011 50 x 138cm



MORDAITH VII (VOYAGE VII)

paint, charcoal and pastel on paper 2013 119 x 48cm



TIRLUN BARDDOL I (BARDIC LANDSCAPE I)

paint, ink and varnish on paper 2010 56 x 76cm



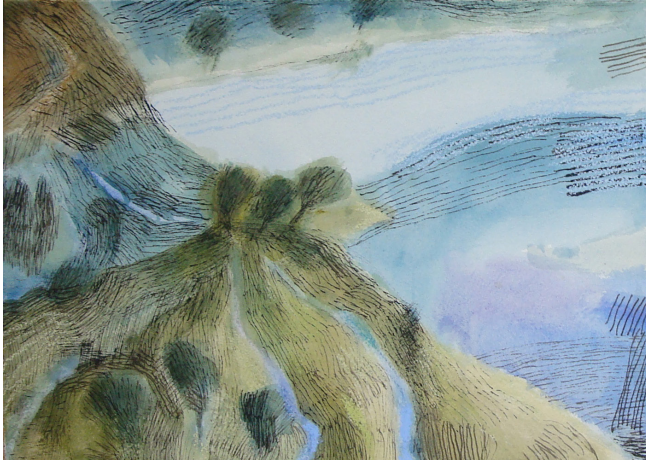
CASTELL I, DYFRYN CLWYD (CASTLE I, VALE OF CLWYD)

ink on paper 2011 28 x 76cm



MORDAITH II (VOYAGE II)

paint, charcoal and pastel on paper 2012 28 x 79cm



CÂN Y GWNEUTHURWR MAPIAU I (SONG OF THE MAPMAKER I)

paint, ink and varnish on paper 2008 57 x 77cm



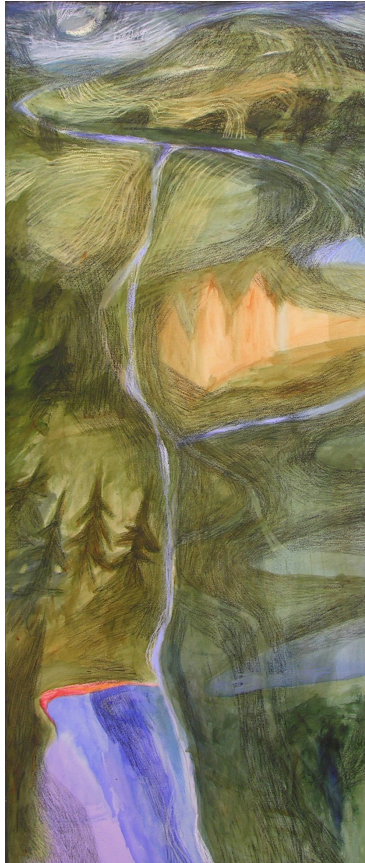
LLYGAD Y FFYNNON I (THE SOURCE I)

paint, charcoal and pastel on paper 2011 50 x 138cm



LAWR Y DYFFRYN - AFON Y GALON I (DOWN THE VALLEY - RIVER OF THE HEART I)

paint, charcoal and pastel on paper 2008 136 x 58cm



TIRLUN II (LANDSCAPE II)

ink on acetate 2011 60 x 105cm



MORDAITH III (VOYAGE III)

paint, charcoal and pastel on paper 2012 28 x 79cm



CASTELL II, DYFFRYN CLWYD (CASTELL II, VALE OF CLWYD)

paint, ink, pastel and charcoal on paper 2011 28 x 76cm



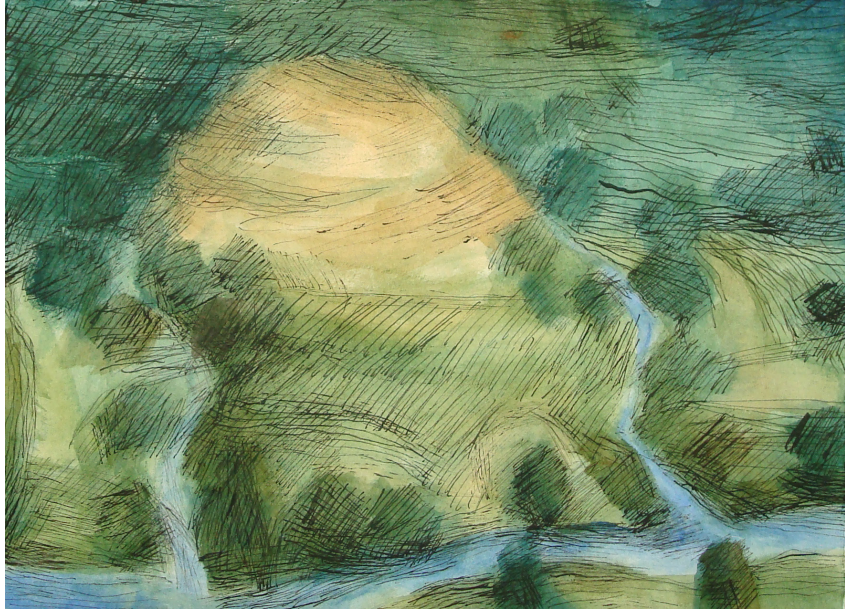
YN ÔL HEIBIO'R COED (RETURNING PAST THE TREES)

charcoal on paper 2006 30 x 42cm



YN YR ARDD II (IN THE GARDEN II)

paint, ink and varnish on on paper 2011 29 x 39cm



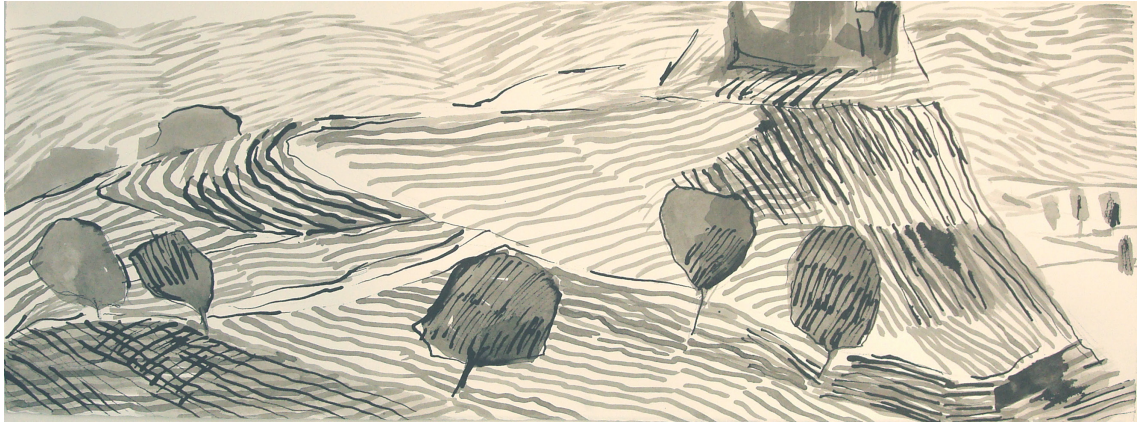
MORDAITH VIII (VOYAGE VIII)

paint, charcoal and pastel on paper 2013 119 x 48cm



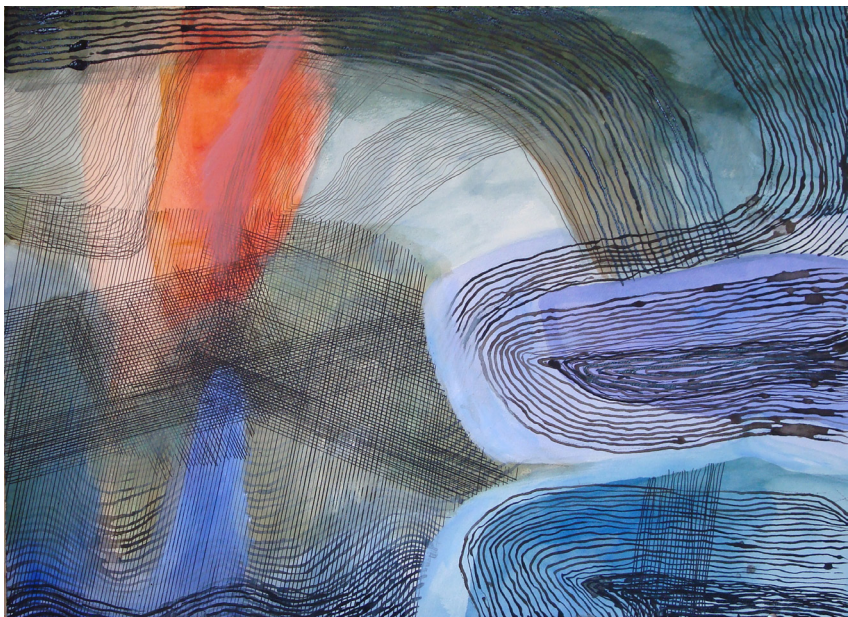
CASTELL II, DYFFFRYN CLWYD (CASTLE II, VALE OF CLWYD)

ink on paper 2011 28 x 76cm



CÂN Y GWNEUTHURWR MAPIAU II (SONG OF THE MAPMAKER II)

paint, ink and varnish on paper 2008 57 x 77cm



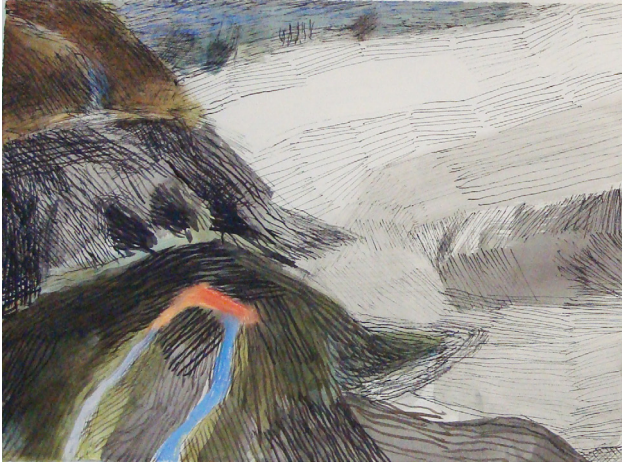
AFON Y GALON (RIVER OF THE HEART)

paint, hand stitching and applique on fabric 2010 49 x 82cm



MORDAITH IV (VOYAGE IV)

paint, charcoal and pastel on paper 2012 28 x 79cm



SYCHARTH

hand coloured lithograph 2014 (edition of 10) 27 x 34cm



CAEAU GWAIR I (HAYFIELDS I)

print 2000 (edition of 200) 21 x 29cm



“...AM DRO I WELD Y BYD” (“...OFF TO SEE THE WORLD”)

print 1993 (edition of 200) 21 x 29cm



MARTIN TINNEY GALLERY
WWW.ARTWALES.COM

18 St. Andrew's Crescent Cardiff CF10 3DD
tel:029 2064 1411 mtg@artwales.com