



LEE GRANT  
BELCO PRIDE /

EDMUND  
PEARCE

LEE GRANT / BELCO PRIDE  
JUNE 05 – 22 / 2013

“Belco’s a hole.... but it’s our hole”

I’ve been told that you never truly leave behind the place you grew up. That it remains deep within your experience of the world. Feeling conflicted about one’s place of origin is certainly not unique, but for me, the process of returning ‘home’ and reconciling my perception of place with its banal and vernacular reality was a surprising yet cathartic experience. The photographs in this series express the idea that belonging, connection and identity is deeply rooted in the specifics of one’s inhabited landscape. The landscape depicted here being the 25 northernmost suburbs of Canberra known as Belconnen, or to us locals, as Belco’.

*I always believed it was the things you don’t choose that makes you who you are. Your city, your neighbourhood, your family. People here take pride in these things, like it was something they’d accomplished. The bodies around their souls, the cities wrapped around those. I lived on this block my whole life; most of these people have. – Dennis Lehane*



*Belco Pride* - 2008  
Archival pigment print  
60 x 60 cm

*Cover:  
Timmy D* - 2009  
Archival pigment print  
60 x 60 cm

Lee is a documentary photographer who lives and works in Canberra. She holds a degree in Anthropology and in 2010 completed a Master of Philosophy at the ANU School of Art. Lee has exhibited at the Australia Centre for Photography, the Monash Gallery of Art and the National Portrait Gallery amongst others. She has been a finalist in the National Photographic Portrait Prize, the Head On Alternative Portrait Prize, the Josephine Ulrick and Win Schubert Prize and the Olive Cotton Award. Lee was also the winner of the prestigious Bowness Photography Prize in 2010. Her work is held in the National Library, the Canberra Museum and Art Gallery as well as numerous private collections.





*Suburban Hedge* - 2008  
Archival pigment print  
110 x 110 cm



*Wednesday Night at the Taiping* - 2007  
Archival pigment print  
110 x 110 cm



*Dan* - 2010  
Archival pigment print  
60 x 60 cm





Top Row L to R: Leni at home - 2009 / Troy with his sons Luke & Leigh - 2008 / Lee - 2010 / The Beehive - 2008 / Sophie at Snippets Salon - 2008  
Bottom Row L to R: Emoh Ruo- 2008 / Roxy and Jess - 2008 / Wheelie bins - 2009 / Bottlemart - 2009 / Michaela- 2009





*Cynthia* - 2009  
Archival pigment print  
60 x 60 cm



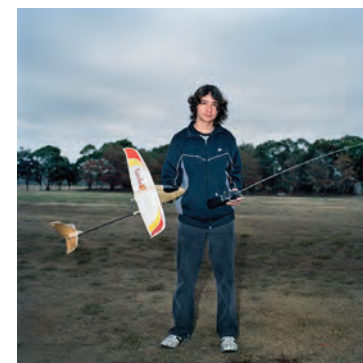
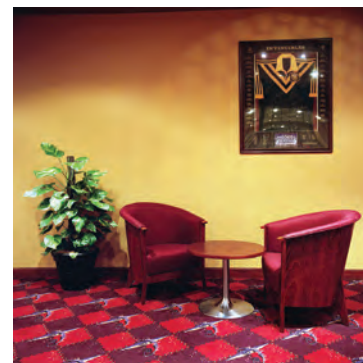
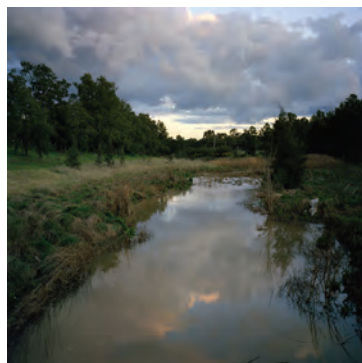


*Paradise is here* - 2008  
Archival pigment print  
60 x 60 cm



*Nathan & Mac, BMX bros* - 2009  
Archival pigment print  
60 x 60 cm





Top Row L to R: *Dennis and Lesley* - 2008 / *Ginninderra Creek before the storm* - 2010 / *Teanna, Toyah, Sarina, Remy and Kristen* - 2008 / *West Belco Leagues Club* - 2008 / *Kiki and Chucky* - 2008  
Bottom Row L to R: *Alisha and baby Saul* - 2009 / *Graffheads* - 2009 / *It's a Belco world...* - 2011 / *The Duot Family* - 2009 / *George with his model aeroplane* - 2008





*Cactus Garden* - 2012  
Archival pigment print  
60 x 60 cm



*Ashleigh in her Formal Dress* - 2008  
Archival pigment print  
60 x 60 cm





*A View of Suburbia* - 2009  
Archival pigment print  
60 x 60 cm



EDMUND  
PEARCE

Lvl 2 Nicholas Building 37 Swanston Street (cnr Flinders Lane) Melbourne Victoria 3000  
[www.edmundpearce.com.au](http://www.edmundpearce.com.au)