

SPLENDOR ON THE RIVIERA



Camille Roche
(1894 - 1948)

SPLENDOR ON THE RIVIERA

Camille Roche

Panels, Paintings and Drawings

October 23rd - November 23rd, 2013

Galerie Dumonteil New York
475 Park Avenue, New York NY 10022 USA
T. +1 212 840 0475
newyork@dumonteil.com
www.dumonteil.com





FOREWORD

A star-struck child, yes I believe that is the state I was in, when Juliette and Andrée the guardians of the atelier of their adored father Camille Roche, who departed this world far too early, opened for me the doors of his studio some twenty years ago. Unseen for almost fifty years, I had the extraordinary privilege to open, one by one, the drawers of the drawing cabinet and experience an intense sense of wonder at each new page discovered.

My desire to share this euphoria was obvious, however I felt that it required time, as with great wines, to reveal this treasure bit by bit, carefully choosing the best occasions and audiences. Beginning 1993 in Paris, and for the subsequent twenty years, these occasions have taken place around the world.

As a result, the stature of Camille Roche is well on the way to being re-launched, recognized and reinstated. Appreciation of his talent was recently further enhanced with the rediscovery of the magnificent panels belonging to the Cholmondeley family.

This show in New York City, plus the upcoming book, a retrospective of Roche's work, are the greatest milestones yet on what has been an extraordinary journey.

It gives me great pleasure to share with you the rediscovered riches and infinite technical and esthetical diversity of Roche's work at the Galerie Dumonteil – New York City.

Pierre Dumonteil
October 20, 2013



Panther
Study for a portion of "*Le Paradis Terrestre*", the monumental work executed in ceramic tile for the 1925 World's Fair, Paris
Manufacture Nationale de Sèvres pavillion
Mixed media, circa 1925
9 1/2 x 9 1/2 in, 23 x 23 cm

CAMILLE ROCHE (1894-1948)

Camille Roche was identified early as a prodigy and was established in his own atelier with tutors and models at age fifteen.

In his late teens Roche's work was commissioned by the Parisian elite, such as Coco Chanel, as well collected by the Director of the Musée Rodin and the Musée du Luxembourg. These works now form part of the drawings collection of the Musée d'Art Moderne.

In 1919 Roche received his first commissions from the Director de la Manufacture Nationale de Sèvres. This relationship was to last for eighteen years during which Roche exhibited in the 1925 and 1937 World's Fairs in Paris. Following the numerous critically-acclaimed works exhibited in the 1937 Fair, commissions came from, amongst others, Baron Robert de Rothschild and the Marquess of Cholmondeley for their homes on the Riviera.

Much of Roche's work remains in the Roche family and the collections of his patrons' heirs. However, thanks to an exclusive agreement with Galerie Dumonteil, Roche's painting has been exhibited in major cities of the world over the last twenty years.

Camille Roche in 1920 having been the first recipient of the Prix Blumenthal, in 1938 his work was exhibited for the 18th anniversary of the Florence Blumenthal Foundation at the Wildenstein Gallery in New York City. Due to family tragedies resulting from World War II this artist's works have only recently been rediscovered and appreciated. The Galerie Dumonteil – New York is delighted to present these works that epitomize the glamour of the French Art Deco aesthetic.



The Wood
Mixed media
17 1/4 x 23 1/2 in
44 x 60 cm

Pigeons
Watercolor on paper, circa 1925
14 1/4 x 17 1/2 in, 36 x 44.5 cm



Horse
Charcoal and pastel on paper
13 3/4 x 17 1/4 in, 35 x 43.5 cm





Swan Screen
Screen of four panels
Mixed media
circa 1935
69 3/4 x 90 1/2 in
177 x 230 cm



Lion
Pencil, charcoal and red chalk on paper
7 1/4 x 9 1/4 in, 18.5 x 23.5 cm

Three Antelopes
Acrylic on canvas
28 3/4 x 23 3/4 in, 73 x 60.5 cm





Panels
Eight panels commissioned by Camille Roche's brother, the famous interior designer Serge Roche, for the vestibule of his townhouse on rue Las Cases, Paris
Mixed media on panel, signed, circa 1935
each panel 86 1/2 x 23 1/2 in, 220 x 60 cm



Sleeping Fox
Mixed media
7 x 13 1/2 in, 18 x 34.5 cm



A pair of Musical Instruments panels
Mixed media, circa 1937
each panel 34 ³/₄ x 32 ¹/₄ in, 88 x 82 cm



Two Ostriches and Three Deers
Mixed media on paper
15 ³/₄ x 18 in, 40 x 45.5 cm



Ostriches and Deer
Mixed media on paper
15 ³/₄ x 18 in, 40 x 45.5 cm



Lord and Lady Chomondeley's *Salle Fraîche*, Villa "Le Roc", Juan-les-Pins, circa 1939



Pannels
A panorama of nine paintings specially ordered by Lord and Lady Chomondeley for the Salle Fraîche of their Villa "Le Roc" in Juan-les Pins
Mixed media on panel, 1939
105 1/2 x 421 3/4 in, 268 x 1071 cm

Black Rooster
Charcoal and pastel on paper
13 3/4 x 14 3/4 in, 35 x 37.5 cm



Boar
Pastel
21 1/4 x 25 1/2 in , 54 x 65 cm



Lioness
Pastel and charcoal on paper
13 1/2 x 11 1/2 in, 34 x 29.5 cm





Turkeys, Hens and Roosters
Screen
Screen of four panels
Mixed media on paper
Circa 1930
71 x 89 3/4 in, 180 x 228 cm

Antelope
Charcoal and pastel
9 x 6 3/4 in, 23 x 17 cm





Two Panthers
Charcoal on paper
6 1/4 x 15 1/4 in, 16 x 39 cm

Sea Hawk
Mixed media on paper
23 1/4 x 16 1/4 in, 59 x 41 cm

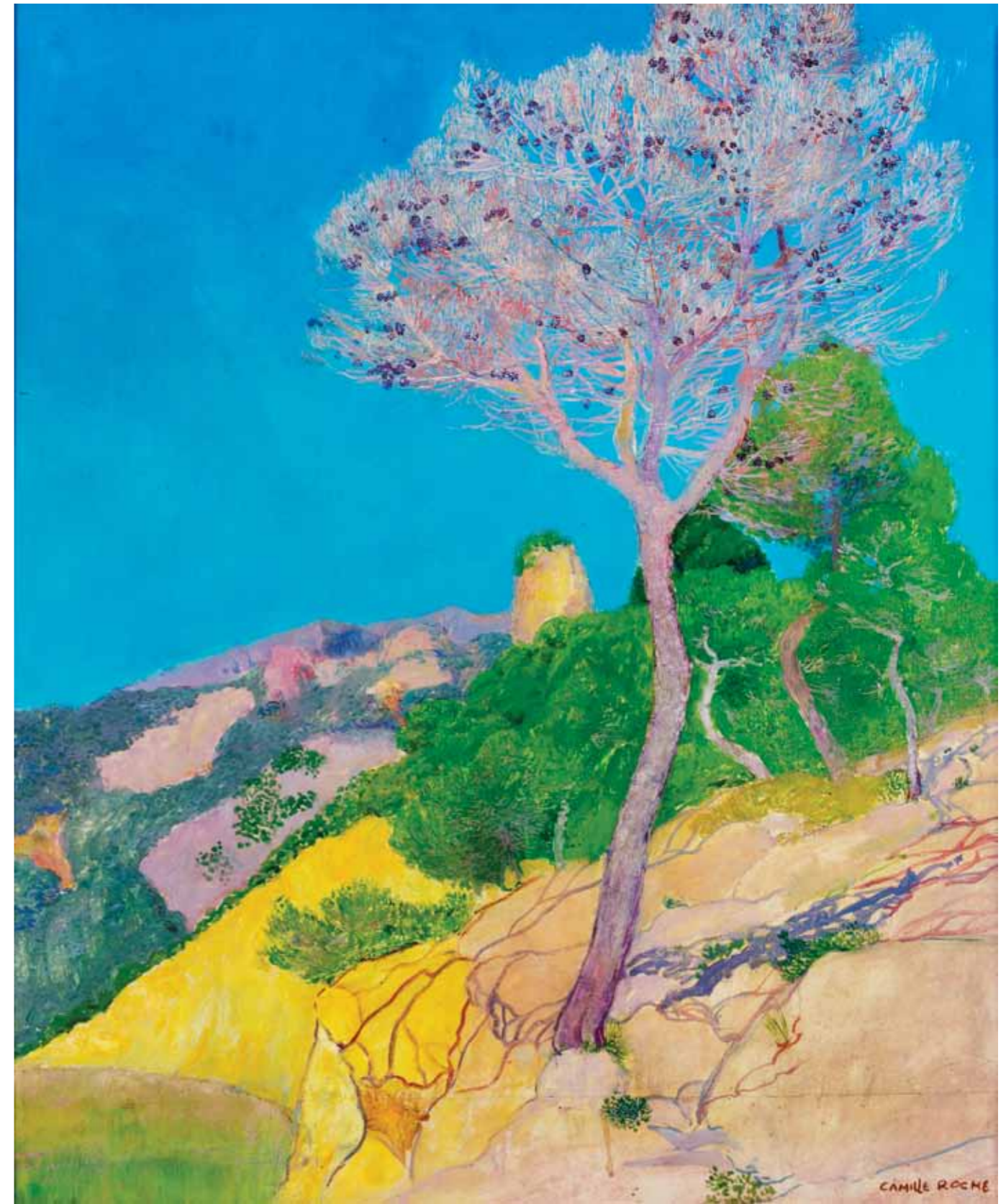




Deer in the Woods
Mixed media
34 1/4 x 66 in, 87 x 167.5 cm



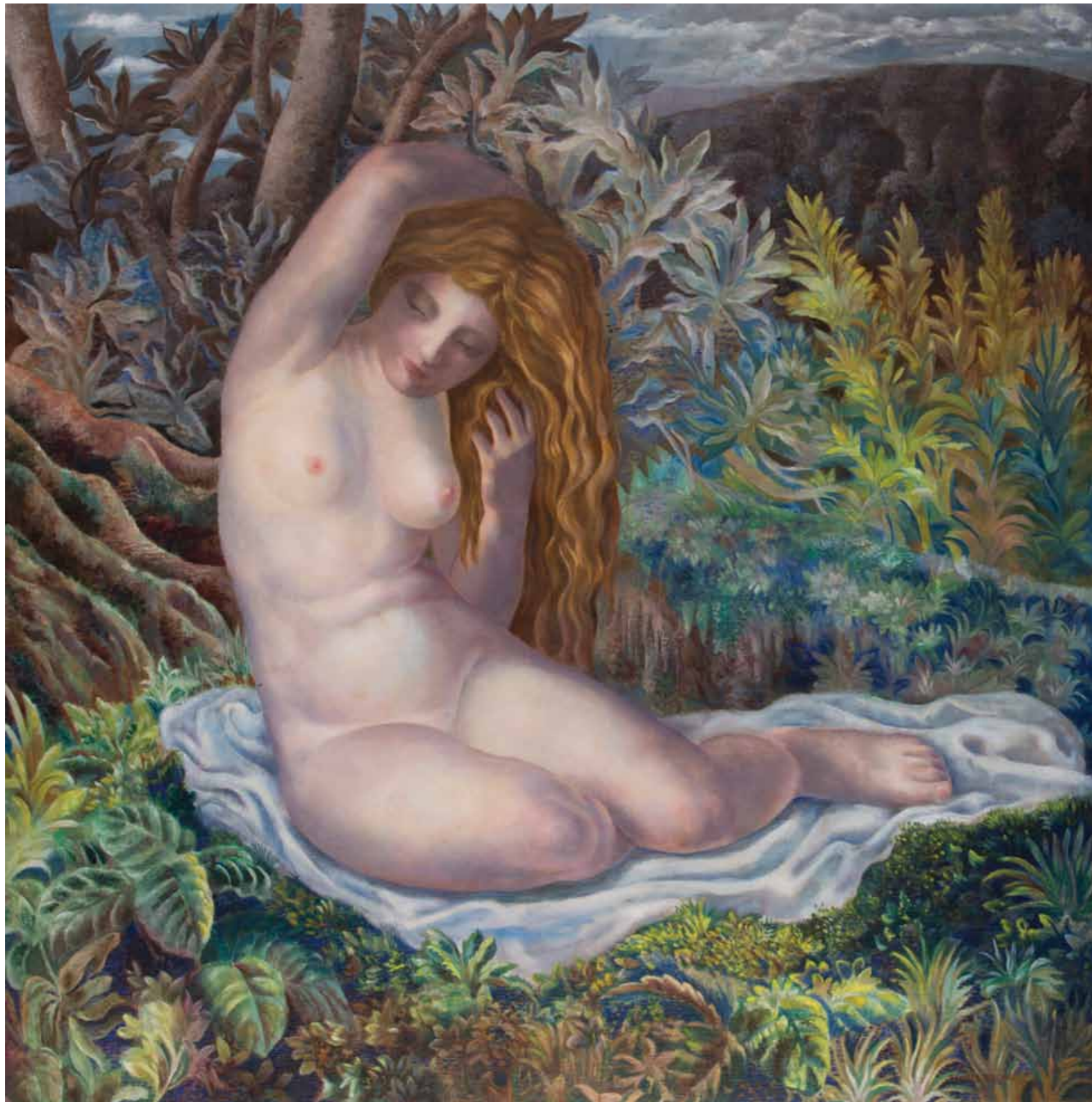
La Creuse
Oil on canvas
32 3/4 x 24 1/2 in, 83 x 62.5 cm



Landscape
Oil on canvas
28 x 23 in, 71 x 58.5 cm



Ducks
Painting on linoleum
20 x 39 in, 51 x 99 cm



La Loire
Acrylic on canvas
45 3/4 x 46 in, 116 x 117 cm

Family of Monkeys
Charcoal on paper
10 3/4 x 11 in, 7.5 x 28 cm



Five Geese
Mixed media
29 1/2 x 20 1/2 in, 75 x 52 cm





Self-Portrait
 Pastel, 1948
 16 1/2 x 12 1/4 in, 42 x 31 cm

INDIVIDUAL AND GROUP EXHIBITIONS

Individual Exhibitions

- 1924 « Dessins, pastels et aquarelles de Camille Roche » (Drawings, pastel and watercolor by Camille Roche), Galerie Devambez, Paris, January 12th - 31st
- 1926 « Exposition de dessins, pastels, décoration par Camille Roche » (Drawings, pastel and decoration by Camille Roche), Galerie Manteau, Brussels, December 4th
- 1930 « Exposition de peintures, dessins et décoration, Camille Roche » (Paintings, drawings and decoration by Camille Roche), Maison d' Art Alsacienne, Mulhouse, January 14th - 31st
- 1930 « Animal Drawings by Camille Roche », Galerie Vincent, Paris, April 1st - 15th
- 1961 « Camille Roche, a Retrospective », Association Florence Blumenthal, Châteauneuf-sur-Loire, July 30th - August 16th
- 1992 « Camille Roche », Galerie Dumonteil, Paris, November 19th - January 9th 1993
- 1993 « Roche, une famille d'artistes, Odilon Roche (1868 - 1947), Camille Roche, (1894 - 1948) », Châteauneuf-sur-Loire, June 19th - July 11st

Group Exhibitions

- 1905 Salon d'Automne, Grand Palais, Paris, October 18th - November 25th
- 1917 Galerie d'Alignan, Paris
- 1920 Salon d'Automne, Grand Palais, Paris, October 15th - December 12th
- 1923 14th Salon of the Société des Artistes Décorateurs, Grand Palais, Paris, May 4th - July 1st
- 1923 Salon d'Automne, Grand Palais, Paris, November 1st - December 16th
- 1924 15th Salon of the Société des Artistes Décorateurs, Grand Palais, Paris May 9th - July 8th
- 1924 « Hundred Drawings Exhibition (6th edition) and Special Exhibits of Foujita, Degaine, Guyot », Galerie Devambez, Paris, October 10th
- 1925 7th Exhibition of the Société des Artistes Animaliers Français, Hôtel Charpentier, Paris, January 20th - February 3rd
- 1925 International Exhibition of Modern Industrial and Decorative Arts, Esplanade des Invalides, Paris, June 15th - November 10th Pavilion of the Manufacture Nationale de Sèvres, pavilion n°37, pavilion B, Exhibition Hall, Pavilion of Artists Decorators, Reception Hall of the French Embassy
- 1925 Salon of the Société Nationale des Beaux-Arts, Tuileries Terrace, Paris, May 1st - August 31st

1926 Salon of the Société Nationale des Beaux-Arts, Grand Palais, Paris, May 1st - June 30th
 1926 17th Salon of the Société des Artistes Décorateurs, Grand Palais, Paris, May 10th - July 10th
 1927 9th exhibition of French Animal Artists, Hôtel Jean Charpentier, Paris, February
 1927 « Paintings of Camille Roche and Leon Drivier and decorative sculptures in bronze, ceramics and crystal »
 Palace Hôtel, Rio de Janeiro, September
 1928 10th exhibition of the Société des Artistes Animaliers Français, Hôtel Charpentier, Paris, January 20th -
 February 4th
 1928 18th Salon of the Société des Artistes Décorateurs, Grand Palais, Paris, May 8th - July 10th
 1929 12th Salon of French Animal Artists, Hôtel Charpentier, Paris, January 18th - February 2nd
 1929 The Animal Artists, Galerie Brandt, Paris, November 16th - December 18th
 1930 Exhibition of Galerie Brandt's Animal Artists, Galerie Brandt, Paris, January - February
 1930 1st exhibition of Blumenthal Foundation, Hôtel Charpentier, Paris, May 30th
 1930 Animal Painters and Sculptors, Galerie Pleyel, Paris, June
 1930 The Animal Artists, Galerie Brandt, Paris, November 25th - December 25th
 1930 Exhibition for the Premiere of Exposition Coloniale by the Office of Colonies, rue Pasquier, Paris, December
 26th - January 2nd 1931
 1931 13th Exhibition of the Société des Artistes Animaliers Français, Galerie Georges Petit, March 2nd - 14th
 1931 21st salon of the Société des Artistes Décorateurs, Grand Palais, Paris, May - July
 1932 14th exhibition of the Société des Artistes Animaliers Français, Galerie Georges Petit, Paris, March 1st -15th
 1932 1st Exhibition of "Group of Twelve", Hôtel Charpentier, Paris, April 8th - May 7th
 1932 22nd Salon of the Société des Artistes Décorateurs, Grand Palais, Paris, May 4th - July 9th
 1932 Exhibition of Blumenthal Foundation's Winners, A US Foundation for French Thinkers and Artists,
 Paris, December
 1932 Exhibition of State Art Institutions, Maison de France, productions of the Manufacture Nationale de
 Sèvres, Paris, April
 1932 The Animal Artists, Galerie Brandt, Paris, November
 1933 2nd Exhibition of "the Group of Twelve", Hôtel Ruhlmann, Paris, March 1st - 31st
 1933 23rd Salon of the Société des Artistes Décorateurs, Grand Palais, Paris, May 5th - July 9th

1933 Exhibition of the collaborators of the Manufacture Nationale de Sèvres, Galerie du Cygne, Paris, June - July
 1933 The Animal Artists, Galerie Malesherbes, Paris, November 17th - December 17th
 1934 Exhibition of the Manufacture Nationale de Sèvres, Maison Bailly, Lille, May
 1934 24th Salon of the Société des Artistes Décorateurs, Grand Palais, Paris, May 4th - July 8th
 1934 « Exhibition of ancient and modern mirrors, glass objects and glass », Galerie Serge Roche, Paris, November
 16th - December 1st
 1934 The Animal Artists, Galerie Malesherbes, Paris, November 30th - December 12th
 1935 Salon de l'Enseigne, Maison Baguès, Paris, March 17th - April 7th
 1935 25th Salon of the Société des Artistes Décorateurs, Grand Palais, Paris, May 3rd - July 4th
 1935 Annual exhibition of the winners of Blumenthal Foundation, Paris, July
 1935 3rd Salon of Light, 40 rue du Rocher, Paris, October - November
 1936 26th Salon of the Société des Artistes Décorateurs, Grand Palais, Paris, May 6th - July 6th
 1937 World Expo of Paris, May 25th - November 25th
 Pavilion of the the Manufacture Nationale de Sèvres and Pavilion of the Société des Artistes Décorateurs
 1937 Annual Exhibition of Blumenthal Foundation, Paris
 1938 28th Salon of the Société des Artistes Décorateurs, Grand Palais, Paris, May 7th - July 10th
 1938 18th Anniversary of Blumenthal Foundation, Galerie Wildenstein, New York, February 2nd - 12th
 1938 18th Anniversary of Blumenthal Foundation, Revue Beaux-Arts, Paris, April
 1938 The Animal Artists, Galerie Malesherbes, Paris, November 25th - December 30th
 1941 The Animal Comrades, Galerie Susse Frère, Paris, December 10th - 31st
 1946 The Animal Artists, Galerie Art Vivant, Paris, February 22nd - March 28th
 1949 Retrospective, the Société des Artistes Animaliers, Cercle Volney Paris, May 3rd - 30th

Since 1995, the work of Camille Roche has been exhibited at preeminent art fairs around the world including la Biennale des Antiquaires, Masterpiece, the Armory Fair and in Paris, London, Shanghai, Palm Beach and Brussels.



Study, Floor Design for a Parlor

A collaboration of Camille and Serge Roche, realized and exhibited at the 1937 World's Fair, Paris, Manufacture Nationale de Sèvres pavillion
Mixed media
16 1/2 x 14 1/4 in, 42 x 36 cm

ACKNOWLEDGEMENTS

This catalogue has been published for the Camille Roche Retrospective "Splendor on the Riviera" October 23rd - November 23rd 2013 at our gallery on Park Avenue, New York City.

For the exhibition and the catalogue I would like to express my gratitude to:

Franck Laverdin, Lucinda Herrick and Dorian Dumonteil in New York

Yuxin Zheng and Liana Yuan in Shanghai

Phuong Do, Elena Semenova and Roxane Dumonteil in Paris

Special thanks go to:

Emilie Moulinoux, for her outstanding contribution in the research and documentation for the catalogue and the upcoming book

Jean-Jacques Duc for his remarkable conservation work at Camille Roche's atelier

Jean Loh and Beaugeste Studio for the publication of this catalogue

I would like to give my heartfelt recognition to:

Juliette France-Roche and Claude-Andrée Marcilhacy-Roche for their extraordinary loyalty to the memory of their father, and for the marvelous preservation of his artworks for almost fifty years as well as for their trust and friendship

The Marquess of Cholmondeley for his trust, friendship and his passion for Art

Pierre Dumonteil
Paris, October 2013



PARIS

38, rue de l'Université, 75007 Paris, France
paris@galeriesdumonteil.com - T. +33 (0)1 42 61 23 38

SHANGHAI

上海市復興中路523弄思南公館22棟15號101室
Sinan Mansions 22, Rm 101, Bldg 15, 523 Fuxing Rd (M) 200025
shanghai@dumonteil.com - T. +86 21 6418 6367

NEW YORK

475 Park Avenue, New York NY 10022 USA
newyork@dumonteil.com - T. +1 212 840 0475

WWW.DUMONTEIL.COM

© Galerie DUMONTEIL - all rights reserved
Printed in Shanghai 2013

