

Motion Study

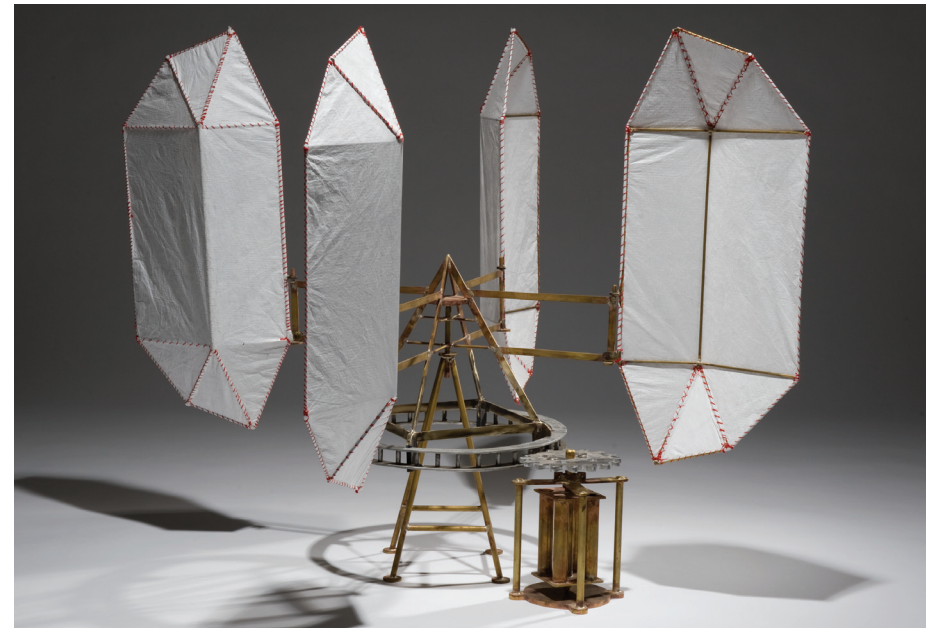
PAUL DANIEL

May 25 - July 15, 2011

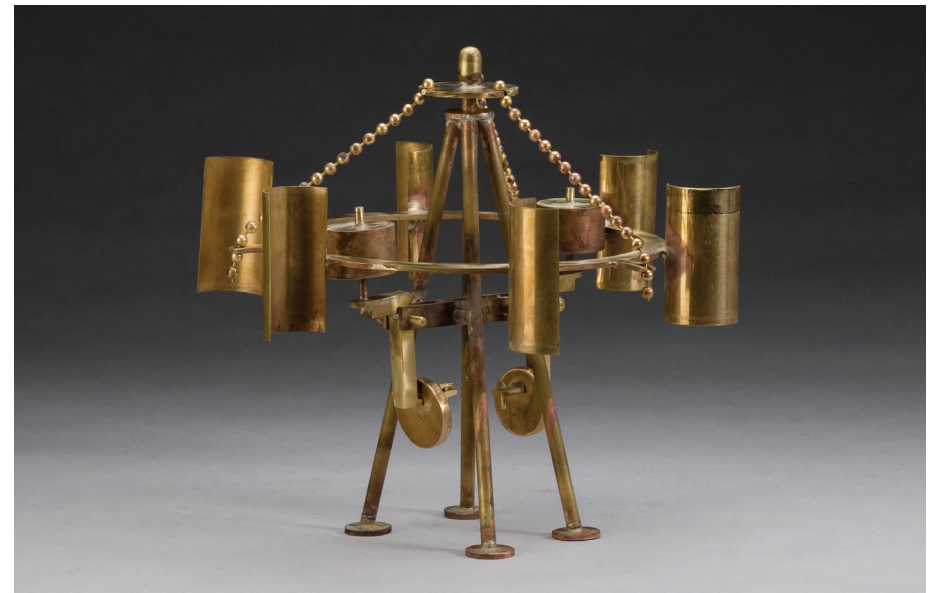


STEROPE, 2008, BRASS AND ALUMINUM, 13 × 11 × 11 INCHES

GENIE, 2009, BRASS, ALUMINUM, AND PAPER, 38.5 × 25.5 × 25.5 INCHES (Cover)



ASTREA, 2010, BRASS, TYVEK, AND ALUMINUM, 29 × 36 × 36 INCHES (Top)



MAIA, 2008, BRASS, 10.5 × 12 × 12 INCHES (Bottom)



KIKO III, 2007, BRASS, 23 × 15.25 × 6.5 INCHES

KIKO-GY, 2007, ALUMINUM AND STEEL, 24 × 20 × 20 FEET (Right)



Paul Daniel

BALTIMORE, MARYLAND

Education

1975, MFA, Rinehart School of Sculpture, Maryland Institute College of Art, Baltimore, MD

1972, BFA, Kansas City Art Institute, Kansas City, MO

Selected Public Art Commissions

2009-10, *Flirting with Memory*, Johns Hopkins Bayview Hospital, Baltimore, MD

2007-10, *Kiko-Cy*, Baltimore Office of Promotion and Tourism, St Paul Street median, Baltimore, MD

1998, *Finalist: Arts Council of Montgomery County*, Germantown Community Center, Germantown, MD

1997, *Oak Leaf Gazebo*, Rocky Gorge Communities Commission, Collaboration with Linda DePalma, Mitchellville, MD

1996, *Finalist: General Services Administration Commission*, George H. Fallon Federal Building, Baltimore, MD

1992, *Naiad's Pool*, Art in Public Places, Rockcrest Ballet Center & Park, Rockville, MD

1991, *Double Gamut*, Baltimore 1% for Art, Franklin Street Parking Garage, Baltimore, MD

1991, *Jack Tar's Fancy*, Snug Harbor Cultural Center, Collaboration with Linda DePalma, Curated by Olivia Georgia, Staten Island, NY

1990, *Sun Arbor & Moon Arbor*, Anne Arundel Co. Department of Parks & Recreation, Quiet Waters Park, Collaboration with Linda DePalma, Advisor: Cindy Kelly, Annapolis, MD

1987, *Goal Keeper*, Baltimore 1% for Art, William Myers Pavilion, Brooklyn, MD

1985, *Messenger*, MD State Fine Art in Public Places, Clifton T. Perkins Hospital, Jessup, MD

1984, *Venter*, Mass Transit Administration, State Center Metro Station, Baltimore, MD

1984, *Titan*, Baltimore 1% for Art, Liberty Elementary School, Baltimore, MD

One Person Exhibitions

2009, *Current Reflection: Kinetic Sculpture*, Katzen Art Museum, American University, Washington, DC

2000, *Kinetic Sculptures in the Pond*, The Park School, Brooklandville, MD

1990, *Recent Sculpture*, C. Grimaldis Gallery, Baltimore, MD

Selected Group Exhibitions

2010, *Public Art League's Sculpture Fest*, Champaign, IL

2010, *Sculpture at The Station*, Green Spring Station, Lutherville, MD

2010, Mattin Center at Johns Hopkins University, Baltimore, MD

2009, *SHIFT: Kinetic Sculptures*, Delaware Center for Contemporary Art, Wilmington, DE

2007, MSAC 40th Anniversary Exhibition, Baltimore, MD

2007, *Outdoor Sculpture Annual*, Artscape, Baltimore, MD

2006, *Summer*, C. Grimaldis Gallery, Baltimore, MD

2006, *Outdoor Sculpture Annual*, Artscape, Baltimore, MD

2006, *MAP@25*, Maryland Art Place, Baltimore, MD

2004-05, *Micro Show*, Sculptors Inc traveling exhibition, originated in Philadelphia, PA

1999, *Art in the Landscape*, Sculptors Inc., The Lillian Holt Center for the Arts, Baltimore, MD

1999, *Contemporary Visions*, Mosley Gallery, University of MD Eastern Shore, Princess Anne, MD

1999, *Small Scale Sculpture*, C. Grimaldis Gallery, Baltimore, MD

1998, *Staten Island Biennial*, Staten Island Inst. of Arts & Sciences, Staten Island, NY

1996, *Celebrating Rinehart*, Artscape, Outdoor Installation, Baltimore, MD

1996, *Rinehart 100: The Contemporary Years (1961-1996)*, Maryland Institute College of Art, Baltimore, MD

1994, *Nine Sculptors' Garden Furnishings*, Franz Bader Gallery, Washington, DC

1994, *Decade: Sculptors Inc. Celebrates Ten Years*, City Hall, Baltimore, MD

1992, *Water Features*, Franklin Square Exhibition Space, Washington, DC

1992, Gwen Mahler Gallery, Washington, DC

1992, *Summer*, C. Grimaldis Gallery, Baltimore, MD

1991, *Snug Harbor Sculpture Festival*, Snug Harbor Cultural Center, Staten Island, NY

1991, *Individual Works*, Ameringer & Avard Ltd., New York, NY

1991, *Summer*, C. Grimaldis Gallery, Baltimore, MD

1991, Gwen Mahler Gallery, Washington, DC

1990, *En Plein Air*, Gallery Francoise, Fallston, MD

1990, *Summer*, C. Grimaldis Gallery, Baltimore, MD

1989, *Art in Motion*, Tempe Art Center, Tempe, AZ

1989, *Six Artists*, Washington Square, Washington, DC

1988, *Outdoor Sculpture*, International Sculpture Center, Washington Harbor, DC

1988, *Sculpture Spaces Baltimore*, Artscape, Baltimore, MD

1988, *A Sculpture Show*, C. Grimaldis Gallery, Baltimore, MD

1988, *Small & Choice*, Winston Gallery, Washington, DC

1987, *The Paul & Joyce Show*, Maryland Art Place, Baltimore, MD

1980, *Paul Daniel/Jack Forsell*, School 33 Art Center, Baltimore, MD

3000 Chestnut Avenue
Mill Centre 214
Baltimore, Maryland 21211

410 366 2001 phone
410 235 8730 fax
goyacontemporary.com

GOYA CONTEMPORARY
GOYA-GIRL PRESS